

(10)

Music Ms. DEPEK

has to get up & walk around
desk to turn back on 4/16

later she sits at her desk w/ no one else is in
room lights stuff

likes high windows to keep open & she can
close blinds on lower windows shut through windows

- takes awhile to heat up room sometimes all
day
- look down low windows make hiding difficult.
- Storage ok.
- Plug ins needed in floor → sometimes have to run
extension cords everywhere. - enough wall outlets
- She does use the sink to wash recorders & her
hands.
- carpet works ok.
- projector on cart. - screen works where it is.
- not necessarily want a d.j. projector but
it wouldn't be in the way.
- lunch time - kids standing in front of door - noisy
- but otherwise ok

26

- having the space biggest success → came from a portable → consider width gwd.
- Plugs in floor / fix lights → biggest thing to change
- More storage would be nice but wouldn't want to take away existing space → like square
- Risers stored in gym → stay about 5ft high
- would be nice to have a little more ballast. ^{risers.}
board space.

PRINCIPLE - 4/17 (11)

LIGHTING Controls,
- ductwork

HVAC - adequate → resolved upstairs issues

Calculus → In one door & out other door
→ route out, side unsafe to playground → doesn't
work well to fence everything
→

- 2 Floors difficult in elementary school → safety
- Query out to portables, kids leave notes in
 - Fire drills → becomes congested @ stairwells
 - could be dangerous
 - Principal can't see out, but receptionist can't see
 - Best pkg lots in town
 - Pick up positive; Drop-off congested, but works
 - Cold → pretty much everyone dropped off
 - Little more get dropped off than walk
 - Office gets too cold during summer, but must
time ok. Light great.
 - Sound pretty positive throughout school; must
keep doors closed.
 - Community doesn't use school too much.
 - Gym used for latched ~~and~~ bag
 - B/G basketball practices in gym
 - Gym used 6 months out of year in evening
 - ↳ Library on 2nd floor not as just because they
go there as a class

- Computer lab on 2nd floor might be better.

Biggest facility → Room size / space / (3) testing rooms

- Cabinets not real deep
- Some classrooms don't have enough counter space

Change: 2 story bldg to 1 story

- Office more centralized might be better if centralized.

Reception 4/17 (12)

- Counter too high for elementary age kids
- Storage good.
- Dry walls
- Love space, nice man
- Can't see outside; skylight would be nice
- base walls too high → can't see
- Need to have nurse's office adjacent to reception → she acts as the nurse sub.
- Sometimes too cold in here; thermostat doesn't have much of an effect.

- Lightly guard; sometimes some glare
 - Biggest success; going to new bldg from old
 (Disadvantage → two separate bldg
) Space, Enough RR for kids & staff
 Small kitchen in office
-

Nurse (13)

- No interview in Nurse's office → can't hear for lockdown - safety.
- Too far from office → have to walk all the way around. - couple times a week have to be an office & nurse suite.
- Suite is unsupervised when she has to leave; don't have one cabinet she locks but dangerous

- Always cold in here (1) thermostat; told her not to adjust → sense of no control!
- Damp or in Exhaust Vent in Exam Room; makes noise from wind → scares little kids
- (2) people occupy nurse's office → (1) person there (1) day a week.
- Key out of school makes it hard to respond to some emergencies. Always wear running shoes.
- (2) first responders → (1) in other bldg
- Hard for ambulance to get to playground (twice)
- Playground → average for injuries
 - Blisters from monkey bars in summer
 - Black top fall or during winter w/ ice
 - K. playground → splitters

109 Pfeiffer 4/17 (14)

Doors locking from outside; keep by doors closed

- Fix doesn't work well
- No winter space; cabinets not deep enough for text books
- Windows are drafty; suppose to be able to get kids out of window, but doesn't open wide enough for this.
- But love view
- Temp. great throughout the year.
- Light very annoying; turns on/off on its own
 - better than it was.
- Tends to keep blinds closed a lot → because of traffic & using the projector. - Upper blinds can't manipulate w/out getting on chair.

- Would be helpful to have outlet in floor for projector.
- " prefer mounting projector from ceiling.
- Screen needs to be mounted higher → she can't back up far enough to make picture bigger w/out getting in way of students.
- Laptops they have are nice but out dated.
- ~~all~~ 2 desktops, but not replacing as they go out.
- 20 kids → 6 laptops. → 2 to 1 minimum preferred ratio.
- Carpet good
- Desks, tables, chairs, ok → strange for furniture
- ~~Currently enough space~~ → make it work
- have to keep laptop cart in room - wasted space.
- Had to add lots of hooks for coats & backpacks.
- Locks on cabinets don't last → not very durable.
- Would be nice to have drop down blinds instead of paper for window.

- Good spot for beds down
 - Love having sinks in room; good location in corridor
 - Would like to have staff restaurant & R in this end of bldg.
 - 2nd grade in Portable
 - Windows don't open; electrical problems
 - Logistics of kids going back & forth to school between bldgs.
 - Not a RR close to 1st grades, so they end their day here → too many kids, RR beams, a mess.
 - Soap Dispenser or drops, plus paper towels not next to sink.
 - Only printer they have access to is in computer lab or upstairs in lounge & other end of bldg.
 - prefer to have a network printer in one classroom like 3rd grade & K.
 - has refrigerator & microwave.
 - has wide windows
- Avoided red for paint/walls

- Tile pattern in corridor encourages "hop-scotch"
- Need outlet by sink
- Recycling program presents → 5th grade runs it.
- Operations → Over summer custodians lower chairs. She had monitor cty high. She has back problems had to have husband come in to do it.
- After a long lockdown, lights come on automatically before they are needed.

15) Room 212 4/17

- Loves this space — love the windows
- Right size; great location in the school, love the counter space
- Limited wall space
- Temp. can be difficult but finds thermostat responsive → winter

- 2 Sometimes too bright for some kids. maybe
- Winter is worst for direct sun - Will more than
table to other end
- Handly ever has lights on.
- Girls RR next door → stall doors sound very loud when closed
Sometimes distracting to students
- don't really hear flushing noise.
- Have enough outlets → maybe one on floor would be nice to have
could be good since she typically works from table.
- Portables & negative → security, safety, quality
- History of adding 1 class/yr - think this wasn't accounted
for during design/funding.
- Elementary school in multiple bldgs doesn't work well
- Not a good use of time to walk students back & forth
to other floor
- Wish we had more green space instead of
parking
- Traded mowing grass for chipping ice.
- Would like oven in teacher lounge
- Keep key for elevator up here in her office
- Testing spaces downstairs are great.
- Enough staff RR → excellent

- Teachers lounge not the gathering spot that it used to be in old school
- Added the conf. room down by office that was great.
- Would love to have solar on building.
- Cabinets work well; deep enough for what she needs.
- Portables - Teachers have to take students to RR in groups, but still have the occasional emergency, the what? → located in one corner of campus + teachers using their laptops/surfing over lunch.

Conrad - Room 201 (16) 4/17

- Loves natural light.
- great SF
- convenient location by library → catches kids
- Can't get lights to turn on - initially turned on, but one sensor turned off.
- Would like have operable windows so she get fresh air
- Takes a long time for HVAC to adapt → either too hot or too cold.
- Would like more outlets by wall.
- An adjustment going from (1) bldg/(1) floor to 2 bldgs (2) floors.
- Biggest success - the additional space.
- But already many problems to deal with when bldg beyond beyond

- ' Teachers lounge needs an oven
- Workroom has a lot of counter space; good.
- Biggest deficiency → lighting controls followed by HVAC.

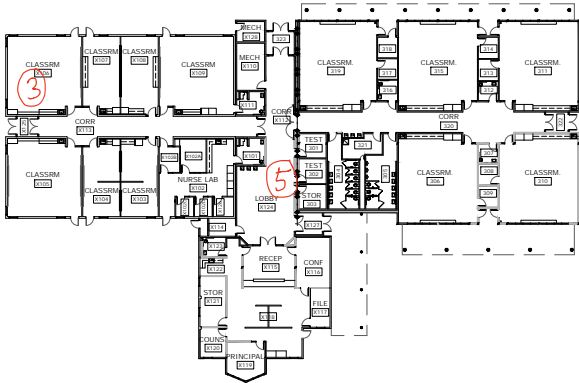
(17)

107 4/17

J. Shaker

McKinley Building 4/2013

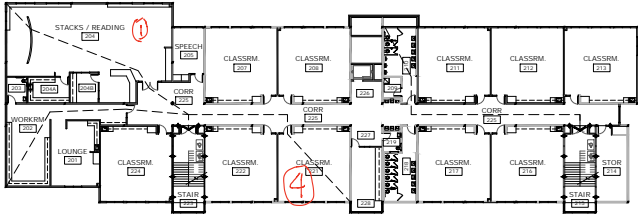
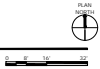
- Windows don't open enough to escape
- Windows very drafty
- Cabinets not deep enough for text books
- Lights turn off too easily/quickly - controls for individuals
- No counter space for classrooms
- No faculty restroom centrally located
- Workroom more centralized
- Breezeway safe factor between buildings (all)
- Keys fit All exterior doors (or rooms) safety
- Bookshelves built in all classrooms
- Coordinate colors with tiles & paint (kid friendly) calming
- Locks on cabinets weak - can be pulled open with strength
- Classroom doors have locks on outside only - unsafe
- Blinds on upper windows can't be opened - need long adjusting poles



18 - 22

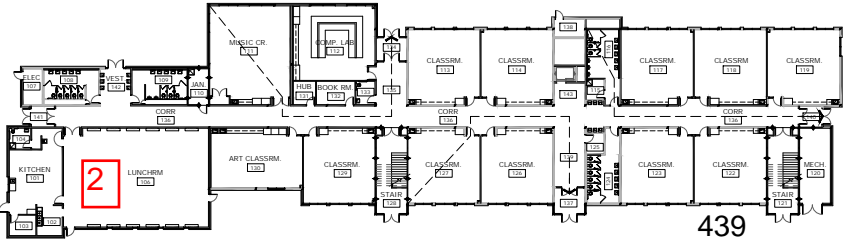
A3 BUILDING 2: CODE REVIEW PLAN

SCALE: 1/8" = 1'-0"



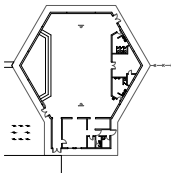
C3 BUILDING 1: SECOND FLOOR CODE REVIEW PLAN

SCALE: 1/8" = 1'-0"



A2 BUILDING 1: FIRST FLOOR CODE REVIEW PLAN

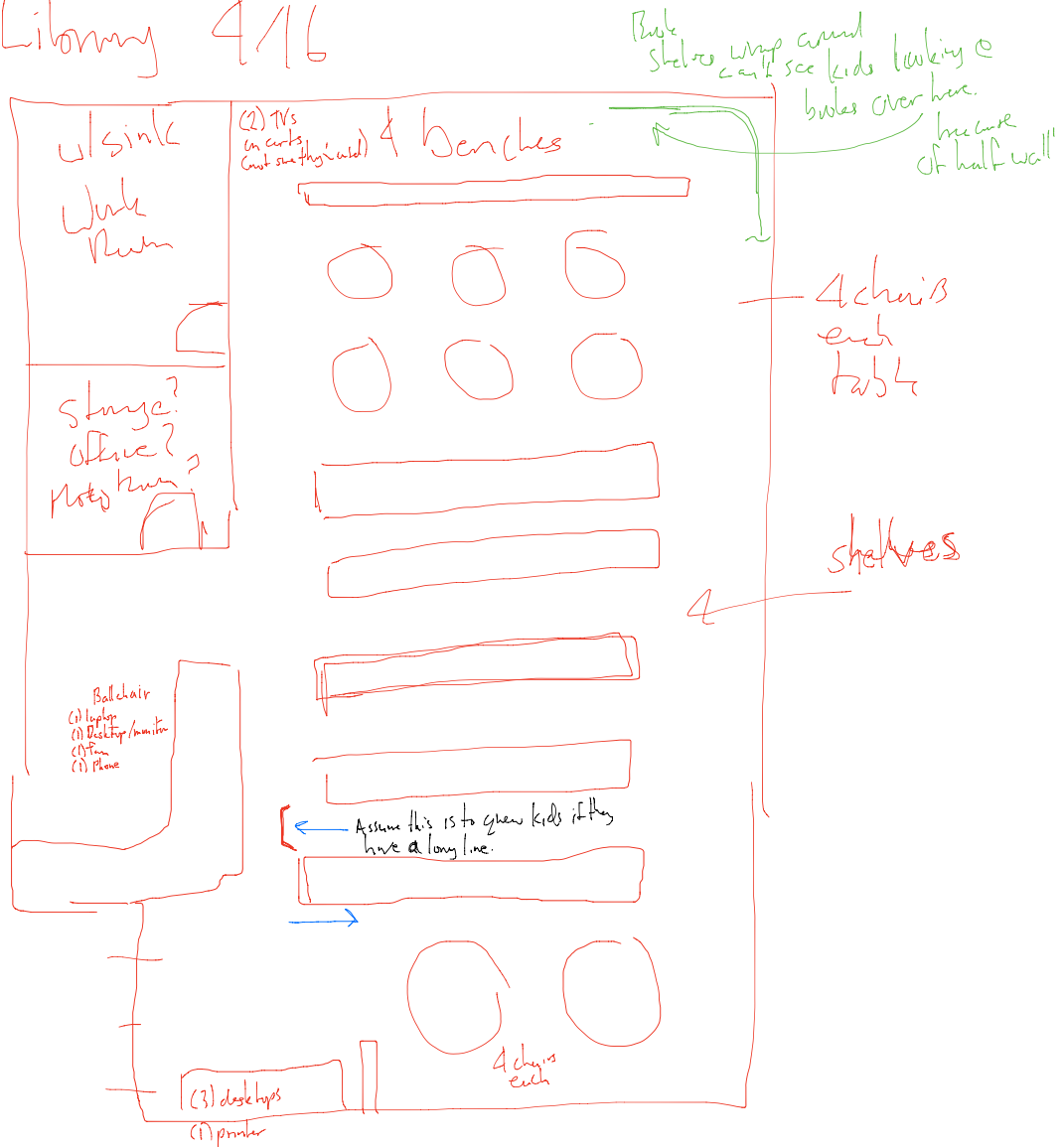
SCALE: 1/8" = 1'-0"



Observation Notes **D** - 10:35 AM 4/16 Library

| <p>A – Activities are goal directed set of actions – things which people want to accomplish</p> | <p>E – Environments are the entire arena where activities take place</p> | <p>I – Interactions between a person and someone else, then building blocks of activities</p> | <p>O – Objects are building blocks of the environment, key elements sometimes put to complex or unintended uses, changing their function, meaning and context</p> | <p>U – Users are the occupants, the people providing the behaviors, preferences, and needs</p> |
|--|---|--|---|--|
| <p>Students coming in (1) by (1) bringing books back; looking for books on their own & checking them out.</p> <ul style="list-style-type: none"> • All bring cards reading books • Librarian periodically reminding students to keep looking for books • Librarian going out into shelving area to check what's going on. has to leave checkout desk. • (2) older students come in & checked out some equipment → could do most of the process themselves. | <p>Callwell provides great daylight, particularly combined w/ windows</p> <ul style="list-style-type: none"> • lights were on but knobably could be off Blinds either lowered all the way or 1/2 way but all open. • ^{couldn't hear anything} seemed a little stuffy, but not bad (least out in space) maybe checkout desk worth since they had a fan going → low noise from fan but constant. • Didn't hear any sound from outside or from adjacent spaces. | <ul style="list-style-type: none"> • Students checking books out from librarian • Librarian answering questions on where the appropriate grades are • Teacher coming in & asking librarian a quick question • Students talking to each other while looking for books - in middle of shelves. | <ul style="list-style-type: none"> shelves in center are tall enough for students to break down & be out of sight (3) computer stations but no one using them while I was present • had a fan on @ checkout desk | <ul style="list-style-type: none"> • Students • Librarian • Librarian aid (2) older students |

① Library 4/16



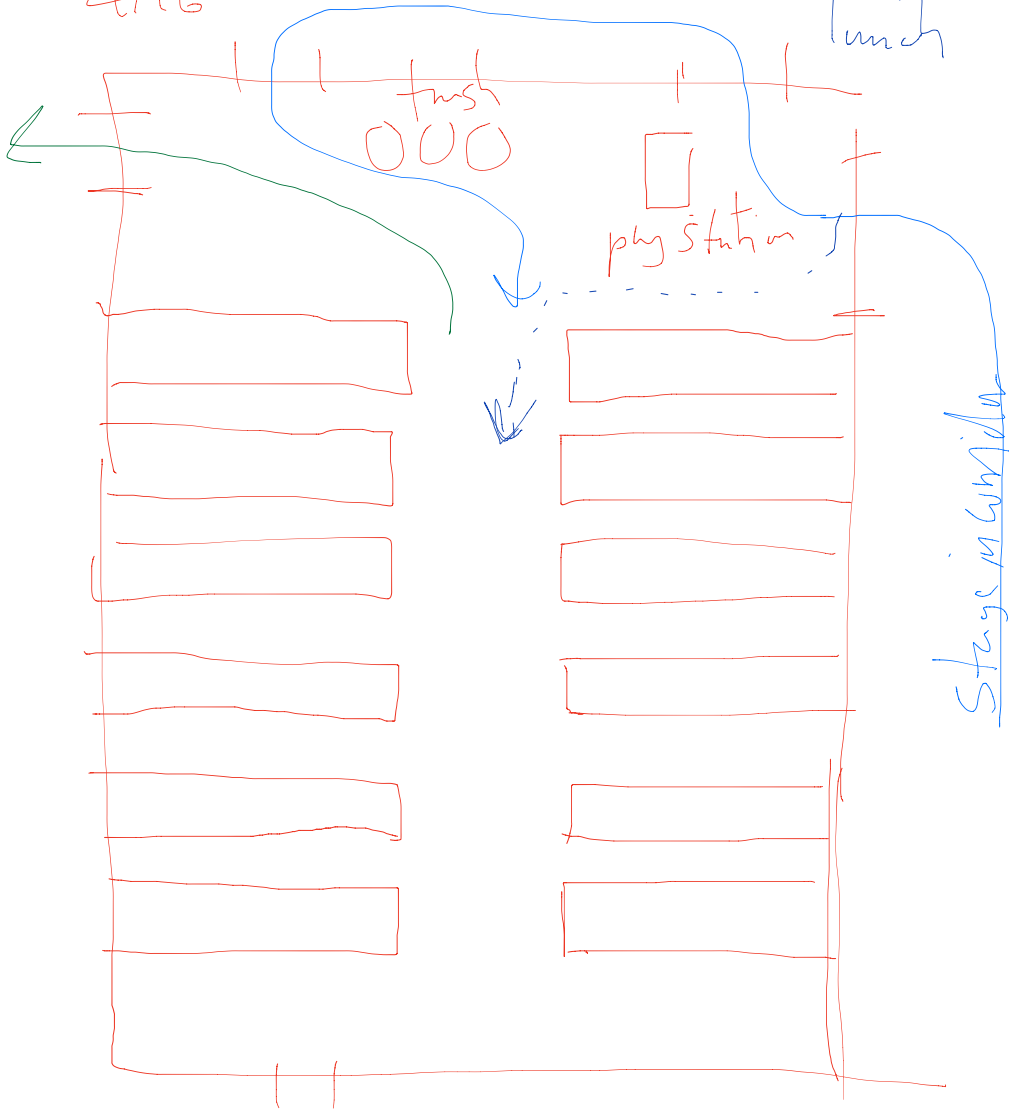
Observation Notes *Lunch Room 11:40 - 12:02 (2) 4/16*

| <p>A – Activities are goal directed set of actions – things which people want to accomplish</p> | <p>E – Environments are the entire arena where activities take place</p> | <p>I – Interactions between a person and someone else, then building blocks of activities</p> | <p>O – Objects are building blocks of the environment, key elements sometimes put to complex or unintended uses, changing their function, meaning and context</p> | <p>U – Users are the occupants, the people providing the behaviors, preferences, and needs</p> |
|---|--|--|--|--|
| <p><i>Students getting trays/food i eaters talking, laughing janitors cleaning tables/floors as students leave. (A) sweeping i (i) wiping + briefly raise silverware to knock food to floor</i></p> | <p><i>Very noisy w/ tables full. (A) small windows All lights on</i></p> | <p><i>raised hand also occasionally fist-bumped students</i> <i>students occasionally raising hands w/ questions</i> <i>-(1) staff seems to primarily responsible for interaction</i> <i>-Head custodian stopped anyone to sing happy birthday to one student! The principal hummed i all the kids clapped</i> <i>Must kids seen to be eating i talking.</i></p> | <p><i>As tables aren't marked they are raised up against wall.</i></p> | <p><i>Need to verify the # of waves of students i length of lunch</i> <i>• Students</i> <i>• Principal directing i instructing</i> <i>• Kitchen staff 4/ kids</i> <i>• custodians</i> <i>13-17 students per table depending on age</i></p> |

② - Lunch Room
4/16

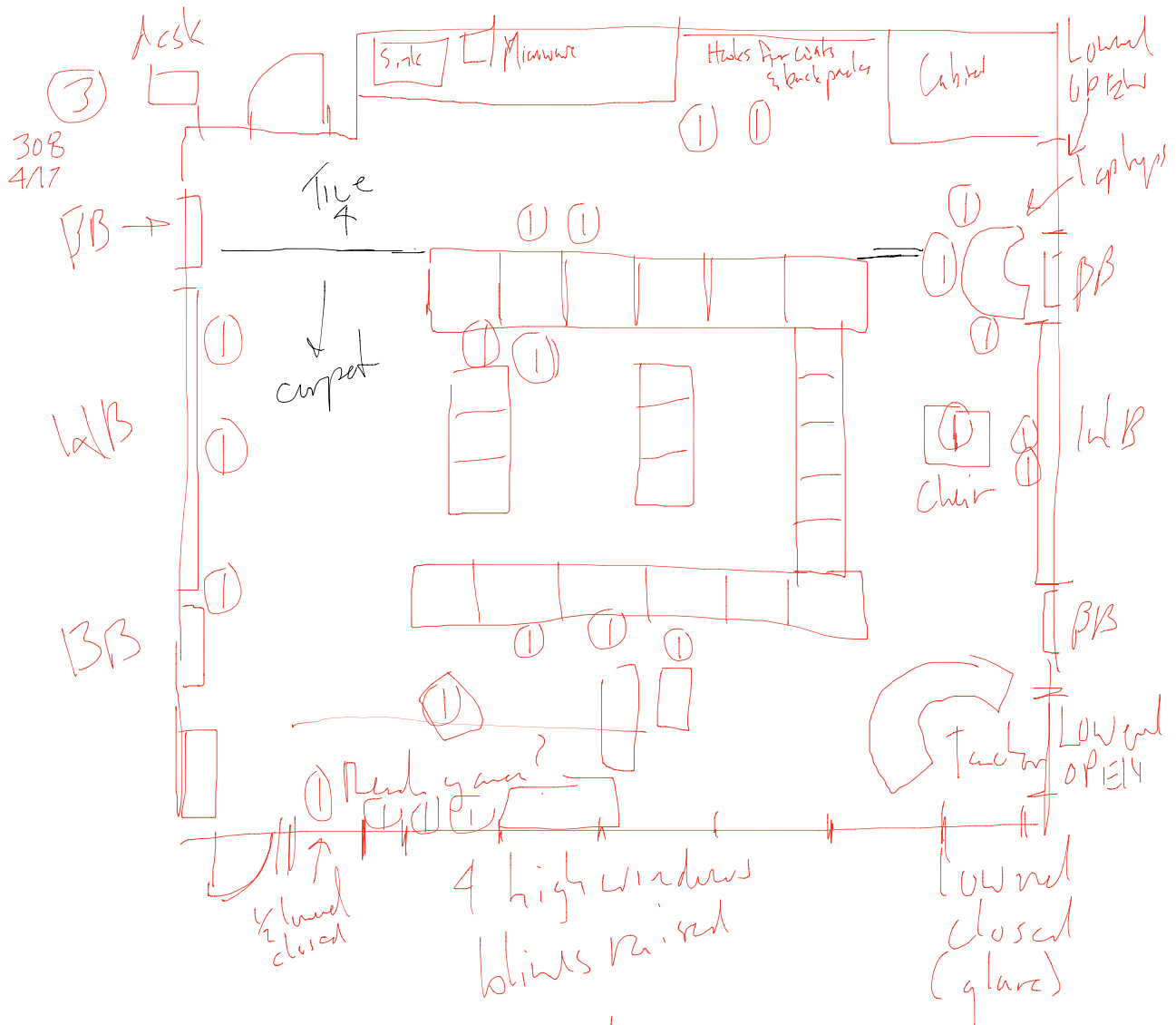
Kitchen

bring lunch



Observation Notes

| <p>A – Activities are goal directed set of actions – things which people want to accomplish</p> | <p>E – Environments are the entire arena where activities take place</p> | <p>I – Interactions between a person and someone else, then building blocks of activities</p> | <p>O – Objects are building blocks of the environment, key elements sometimes put to complex or unintended uses, changing their function, meaning and context</p> | <p>U – Users are the occupants, the people providing the behaviors, preferences, and needs</p> |
|---|--|---|--|---|
| <p>Kids working on their own @ desks; teacher up walking around instructing or curative Kids periodically getting up to sharpen pencil</p> <hr/> <p>Then breaking up to read to themselves or work on laptops Teacher periodically asking them questions/engaging. Used microwave once.</p> <hr/> <p>Then partnering up w/ each other to quiz on what they read - Same general locations.</p> | <ul style="list-style-type: none"> • Enough space among desk layout for teacher to walk among students • Looks like enough space to spread out to at least read to themselves. • Door was open whole class time - Heard some of the other classes nearby. A few times heard Did not seem to do much kids while they were reading. • All lights on during observation time including undercabinet. • Chalkboard • Temp. seemed comfortable, maybe slightly cool if you have short sleeves - Undercabinet lights don't need to be on all the time - Having a separate switch on wall instead of up on light - easy access more likely to turn off | <p>Individual Reading → kids periodically w/ speaking to each other but not loud; teacher reminding that they need to be reading</p> <p>Quizzing each other in pairs</p> <ul style="list-style-type: none"> - Little louder, but still generally quiet. - once in a while in pairs noise level rose significantly though anyone talking in normal voices → door still open. | <p>Ball chairs – looks like all but (5) students using the ball chair.</p> <ul style="list-style-type: none"> - Definitely allows them the ability to wiggle while still working - Desks – seem right size for most of the 3rd graders (2) of the boys were a little big for the desks. - Carpet Edge Conflicts w/ ball chair legs & one rolling chair legs. No one complained but saw students slightly struggle moving chairs in/out from under desk. - Desks may be slightly small for being able to use the holes & underbars needed @ some times - A lot of plug loads <ul style="list-style-type: none"> - Fluor lamp, flat iron, microwave, coffee maker, incense (2) laptops, digital camera, re-charge pencil sharpener, walkie talkie station, portable radio → lots of plug strips & cords | <p>(1) student partially sitting @ desk in hall – boy</p> <p>(16) students in class</p> <ul style="list-style-type: none"> - 11 boys; 7 girls - Mix of jeans/shorts; short slacks & long slacks; (2) kids wearing pull overs w/ hoodies – hot tops - lots of coats, jackets @ hooks <p>Teacher → female; 30s</p> <ul style="list-style-type: none"> - skirt w/ blouse/sweater |



(#) - Locations where kids were reading to themselves - did more around. Low working on laptop

Teacher pointed out that the sinks over here aren't closed underneath w/ a lockable cabinet. No place to store cleaning supplies & hide them. Don't fit well in cabinets above.

Observation Notes (4) 269 4/17 - 4th grade 9:55 - 10:50

| <p>A – Activities are goal directed set of actions – things which people want to accomplish</p> | <p>E – Environments are the entire arena where activities take place</p> | <p>I – Interactions between a person and someone else, then building blocks of activities</p> | <p>O – Objects are building blocks of the environment, key elements sometimes put to complex or unintended uses, changing their function, meaning and context</p> | <p>U – Users are the occupants, the people providing the behaviors, preferences, and needs</p> |
|--|---|--|---|--|
| <p>Initially working on their own w/ teacher answering questions individually. Then some group instruction @ white board's from AV equipment cart.</p> <p>At one point student came in from another class to grab laptop → walked across back of room – disrupted focus of students @ back of room (Curt). But student was quiet. Disruption minimal.</p> <p>Presentations</p> | <p>Door left open</p> <p>Lights like like they're on 75% full on. ; cloudy day.</p> <p>At one point students rejoiced when something was done. Sound probably carried in corridor</p> <p>Door closed for presentations</p> <p>Can hear a hum of HVAC system</p> <ul style="list-style-type: none"> Teacher easily talks over it Some of students had harder time speaking over this during presentation – but mainly when they're unsure of what they're talking about. <p>Generally comfortable – maybe slightly stuffy.</p> <p>Window closed, no sound issues from corridor during presentations.</p> <p>Several of the students fidgeting during presentations had chair might help them.</p> <p>Sitting in the back corner, I could hear pretty well.</p> | <p>Individual teacher answering questions</p> <ul style="list-style-type: none"> Teacher instructing from front of class. Students giving presentations & asking/answering questions | <p>Hardly any of the coats on the floor here. Most of the backpacks hanging as well probably a dead hanger.</p> <p>Laptop Cart → 30 laptops plugged in charging</p> <p>Watched at back of room to minimize disruptions when students come in from other classes to get corp. Would be better if located closer to door. There is an outlet over there.</p> <p>Desks & chairs seem to be right sized for most of the students. One boy may be a bit big for his desk.</p> <p>quite a few as many plugboards (personal) as last room observed. No fng. closer to workroom/lounge?</p> <p>A bunch of supplies/stuff stored on top of cabinets; difficult to access; dangerous to a degree.</p> | <p>21 students (7) boys; 14 girls</p> <p>Generally pants/jens</p> <p>Mix of short sleeve shirts & pullovers; Also a lot of jackets & coats @ hooks.</p> <p>(1) teacher; pants & blouse + jacket + skirt</p> <p>Initially was a female and a special ed working w/ a student @ the table.</p> |

