

Orchestra (10)

Technology - very well equipped
stage

- Interactive white boards → don't have → would like.
- Space - likes to use
 - already outgrowing orchestra room
 - for symphony orchestra & use band room
- Temp. good. Originally temp. not set correctly for instruments but district adjusted
- Really like music library
- Likes office's views of spaces where students
- Plenty of breads for announcements
- Lighting great + automated shades great.
- have a uniform room → bought racks w/ wheels
- outgrowing instrument storage room.
- She has a little issue, instruments already on floor; not enough storage for expensive instruments
- Access to practice rooms great. ; practice rooms good size - fit ensemble
- Students comfortable w/ colors. → good palette
- Acoustics - excellent; carpet great also softens impact if sets instruments fall
- Good furniture; comfortable - well thought out.
- that

Choir (11)

Wishes it was bigger & had more storage

Tech. has never worked since

Wish it had audio through projector

Love grand piano

Furniture holding up well.

Temp. gets kind of cold sometimes → from AC

Thermostat not responsive.

Lighting good → likes daylight

Blind work Enough whiteboards

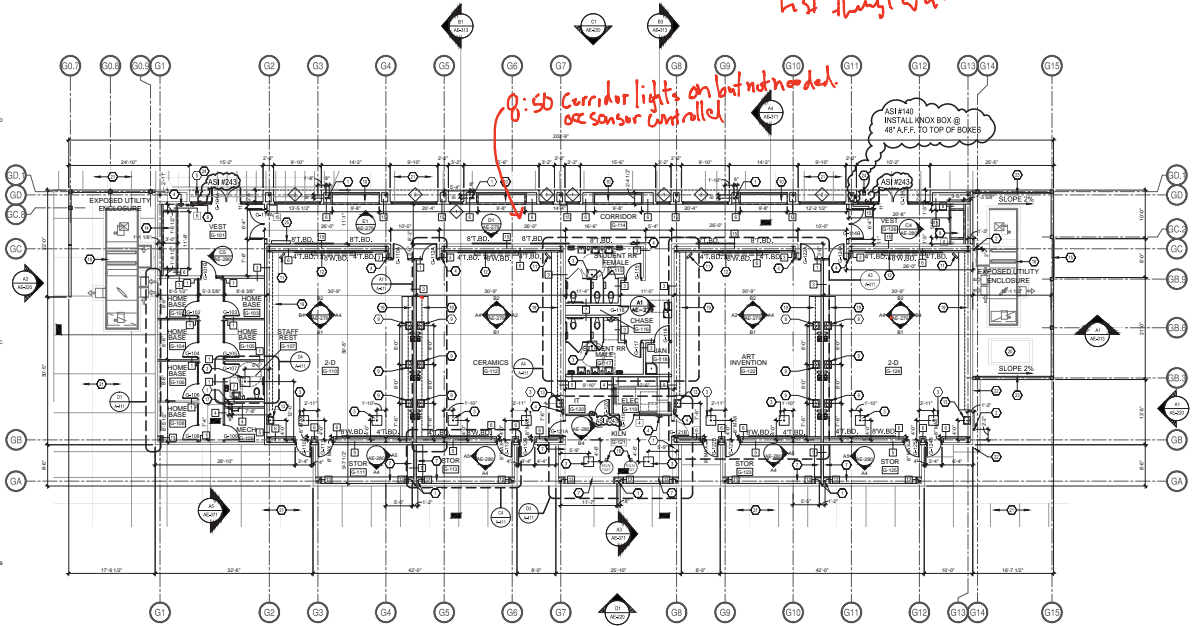
Acoustics good.

Would love to have smart boards

over here just got without
projectors

Summary says drywall comes down to low in corridor → mgn horizontal first through wall.

8:50 Corridor lights on but not needed. ocs sensor controlled.



ART G 1ST FLOOR PLAN AREA - M

GENERAL SHEET NOTES

1. 100'-0" REFERENCE ELEVATION EQUALS 4196.70 MILE
2. ALL PLAN DIMENSIONS ARE TO FACE OF STUD OR CENTERLINE OF COLUMN UNLESS OTHERWISE NOTED
3. 2'-0" TO BOTTOM OF WHITEBOARDS AND TACKBOARDS IN STUD
4. REFER TO AF-100 FOR ADDITIONAL FINISH INFORMATION
5. REFER TO REFLECTED CEILING PLANS FOR LOCATIONS OF ALL TACKBOARDS IN CORRIDORS
6. REFER TO INTERIOR ELEVATIONS FOR TYPICAL LOCATIONS OF ALL TACKBOARDS IN CORRIDORS
7. CORRIDOR TACKBOARDS NOT ELEVATED OR NOTED OTHERWISE TO BE CENTERED ALONG LENGTH OF WALL
8. STRUCTURAL STEEL MEMBERS, JOIST BEAMS, ETC. - IN ROOMS THAT ARE FINISHED WITH FLY-IN GELCOUSE OR ARE OPENED TO STRUCTURE SHALL BE FIREPROOFED.

SHEET KEYNOTES

1. INTERNAL ROOF DRAIN AND OVERFLOW - 4" DIA. REFERENCE PLUMBING
2. EXTERNAL ROOF DOWNSPOUT LOCATION, 4" DIA. (MIN.) REFERENCE PLUMBING FOR TIE-IN TO STORM DRAINAGE
3. 24" X 24" S/WALL, SLOPE AT 1/8" TO FLOOR DRAIN
4. FIRE EXTINGUISHER IN CABINET AS SPECIFIED, REFERENCE DETAIL C04E-512
5. HIC DOOR OPERATOR PULSH PAD MOUNTED ON 2" X 4" S.D. x 3/8" HIC POWDER COATED BOLLARD BY HANTCO
6. HIC DOOR OPERATOR PULSH PAD
7. 1" THICK PLYWOOD ADJUSTABLE SHELVES WITH PLASTIC LAMINATE FINISH AND HARDWOOD EDGES ON HEAVY DUTY STANDARDS AND BRACKETS
8. DISPLAY CASE, 72" H X 72" W X 36" D, MODIFIED MODEL NUMBER 394 AS MANUFACTURED BY CLARIDGE, HARRISON ARKANSAS, 800-434-4610, WWW.CLARIDGEPRODUCTS.COM OR APPROVED EQUAL
9. SINGLE COMPARTMENT SINK
10. DISPLAY CASE, MODEL NUMBER 396 AS MANUFACTURED BY CLARIDGE, HARRISON ARKANSAS, 800-434-4610, WWW.CLARIDGEPRODUCTS.COM OR APPROVED EQUAL
11. TV MONITOR MOUNTING BRACKET, BOTTOM AT 7'-4" AFF
12. MOTORIZED PROJECTOR SCREEN AS SPECIFIED
13. SINGLE COMPARTMENT SINK WITH SOLID INTERCEPTOR
14. DISPLAY CASE, 72" H X 74" W X 36" D, MODIFIED MODEL NUMBER 397 AS MANUFACTURED BY CLARIDGE, HARRISON ARKANSAS, 800-434-4610, WWW.CLARIDGEPRODUCTS.COM OR APPROVED EQUAL
15. SINGLE DIVING GATE WITH METAL PANELING TO MATCH SURROUNDING METAL PANEL SYSTEM, RE. DETAIL B44E-512
16. KILN (RT 2) - ACCESS FLOOR, 100% AS MANUFACTURED BY SKITT MFG., PORTLAND OREGON, 503-774-6000
17. WWW.SKITT.COM OR APPROVED EQUAL
18. ROOF HATCH ACCESS LADDER, SEE DETAIL E44E-580
19. MECHANICAL UNIT AND PAD, REFERENCE MECHANICAL UNIT IN CASEWORK, SEE INTERIOR ELEVATIONS FOR MORE INFORMATION
20. HATCH AND PAD, REFERENCE MECHANICAL
21. CONCRETE WALK, REFERENCE CIVIL
22. CONCRETE APPROX. REFERENCE CIVIL
23. 8" CONCRETE CURB (THIS WALL ONLY), REFERENCE STRUCTURAL
24. PROXIMITY READER ON BOLLARD
25. OVID MONITOR

PLAN SYMBOL LEGEND

- X PARTITION TYPE SYMBOL
REFERENCE SHEET AE-390
- ◇ WINDOW TYPE SYMBOL
REFERENCE SHEET AE-245
- X-XXX DOOR NUMBER
REFERENCE SHEET AE-245 & AE-607

ALUMINUM METAL STUD WALL HEIGHTS/SPACING/NOSEBOARD/PARTING BASED ON LVL.

THE CONTRACTOR SHALL PROVIDE AND INSTALL ALL INTERIOR METAL STUD WALLS BASED ON THE FOLLOWING CRITERIA:

STUD BEE GAUGE/SPACING	ALLOWABLE HEIGHT
18"X19" O.C.	12'-0" MAX.
12"X16" O.C.	10'-0" MAX.
12"X16" O.C.	10'-0" MAX.
12"X16" O.C.	10'-0" MAX.
12"X16" O.C.	10'-0" MAX.

* FORM WALLS EXCEEDING THESE HEIGHTS PROVIDE AND INSTALL 1/2" X 1/2" COLD ROLLED CHANNELS HORIZONTAL @ 8" O.C. (16" O.C. @ 8'0" MAX) AND HELD PER SINK JOIST OR RAMP RECOMMENDATION.

KEY PLAN

ASA ARCHITECTS

LISA CRUCES, P.E. (M) 800.999.1000
LISA CRUCES, P.E. (M) 505.261.1000
WWW.ASAARCHITECTS.COM

Letter/Print/Submit

LISA CRUCES, P.E. (M) 800.999.1000
LISA CRUCES, P.E. (M) 505.261.1000
WWW.ASAARCHITECTS.COM

STATE OF NEW MEXICO

Professional Engineer
02/15/10
LISA CRUCES, P.E. (M)

A NEW HIGH SCHOOL
(DRAWINGS OF RECORD) 05/24/12
 FOR: LAS CRUCES PUBLIC SCHOOLS
 LAS CRUCES, NEW MEXICO

ART BUILDING G FLOOR PLAN AREA - M

SHEET NO: **AE-101M**
Sheet of ...

614

08/08/2014

A133 - Language Arts (E)

- Like furniture
- Pass through a distraction initially
- But no floor outlets → have to run
- Room size manageable
- Still need space for some textbooks & some supplies.
- Maximum she has is 31; but for this size room, if 24/26 best → get rid of back row of tables.
- Maybe
- Likes multilevel of Lighting control & daylight
- Likes carpet where they sit → reduces sound level
- Wishes she had more storage @ her desk.
 - would be nice to have at least (7) bookshelves per classroom.
 - bought a standard tray but didn't fit in her top desk.
 - purchased on shelving
 - Temp. generally good in here.
 - In A133 last year cold.
 - # of outlets ok but located better
- likes the colors on the walls → at least one wall per classroom.
- Maybe → LA teacher could bring in spanish books.
 - office has become her storage room.
- Loves technology

Door Counts - 10:50 10/24

A		B		C	
<u>CLASS</u>	<u>OPEN</u>	<u>CLASS</u>	<u>OPEN</u>	<u>CLASS</u>	<u>OPEN</u>

UPPER FLOOR
How the desks
instructing down hall
towards middle

Recycle bins in B-building

See one
class
during
puls work
in
corridor.

⑨ C116

Sometimes temp. is an issue. — Seemed warm when I was in there.

— Regulate w/ blinds

— Love smart board

→ lights are motion sensor.

— Like that she can move furniture

— Mess w/ outlets

— Not enough outlets → no floor outlets

— Thermostat not responsive

— Carpet has held up

— Would picture more white

— No cabinets, bookshelves finished w/ wood

— Sometimes have to play w/ lighting controls to get to come on.

— Occ sensor doesn't turn lights off on her.

— has a fan in her space.

— Couch → lights in the room ^{locken} girls don't come on.

— Stand ~~at~~ whole time to move goals up & down — 11 minutes

— Ann Glyn closet doors — today

— Fantastic — love the ~~court~~ courts.

- Safety Committee

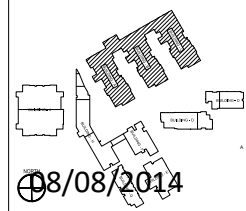
- Emler's i wheelchair → Evacuation can be an issue because of multiple stories.

- Walk across landscaping between C & D

GENERAL SHEET NOTES

○ SHEET KEYNOTES

KEY PLAN



08/08/2014

ASA ARCHITECTS
 1000 W. UNIVERSITY AVENUE
 SUITE 100
 P.O. BOX 146
 LAS CRUCES, NM 87801
 505.252.3111 | FAX: 505.967
 www.asa-architects.com

Dickter/Perini/Garabini
 ARCHITECTS
 1000 W. UNIVERSITY AVENUE
 SUITE 100
 LAS CRUCES, NM 87801
 505.252.3111 | FAX: 505.967
 www.dickterperinigarabini.com



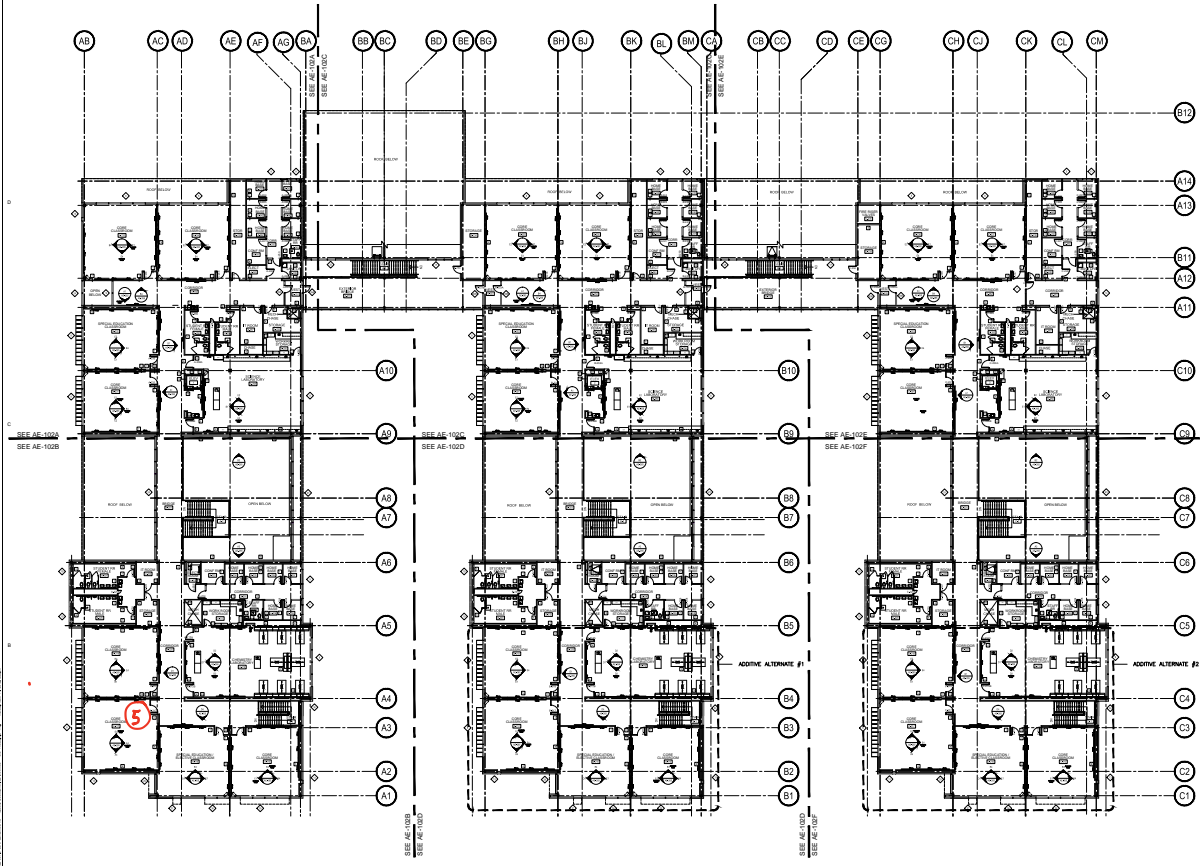
A NEW HIGH SCHOOL
 (DRAWINGS OF RECORD) 0022412
 for:
 LAS CRUCES PUBLIC SCHOOLS

NO.	DATE	DESCRIPTION	BY	CHKD.

CAREER CLUSTERS
 BUILDING A,B,C
 OVER ALL
 2ND FLOOR PLAN

PROJECT NO. 072024
 CD/DRG FILE: 072024
 DRAWN BY: CH
 CHECKED BY: CH
 DATE PLOTTED: 08/08/2014

Sheet of G-118



CAREER CLUSTERS BUILDING A,B,C OVER ALL 2ND FLOOR PLAN
 620

North - A217 (5)

No floor outlets, but have

Census outlets

Leaves Underneath; Run out of head space
have to use windows

- → use glass cabinets

- like that office is new room & bathroom
new hwy

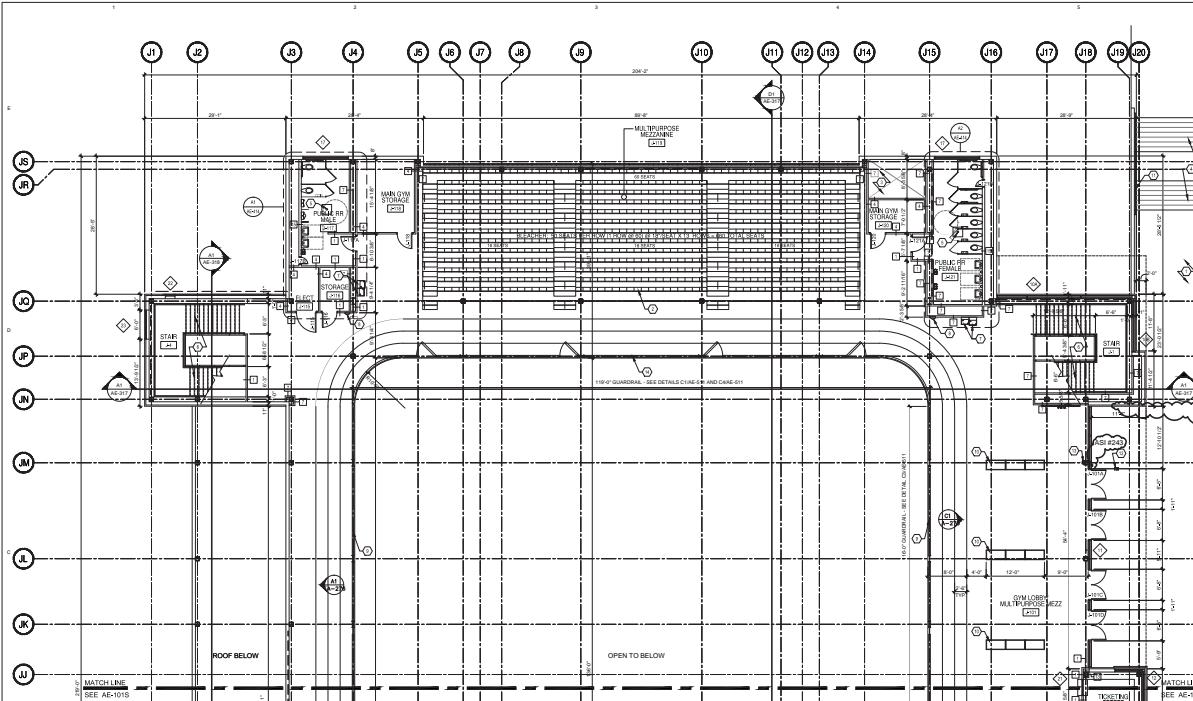
- 2:30 / 2:40 they go off

- Sensors don't work to turn on/off

- Switch new door & fuel station

- Party in school year have access to district
parking

- Can fold up tables to put up against wall
- Enjoy having the gym track available
- down stairs in office have cutting board
- would be nice to have a lounge in each
generally cut the number of office → not as
community lobby
would like central place with tables in
this floor / area.



GENERAL SHEET NOTES

- 85'-0" REFERENCE ELEVATION EQUALS 4181.79' MSL
- ALL PLAN DIMENSIONS ARE TO FACE OF SET OR CENTERLINE OF COLUMN UNLESS OTHERWISE NOTED
- PROVIDE A WATERPROOF MEMBRANE AS SPECIFIED ON FLOORS IN ALL 1ST FLOOR ROOMS WITH FLOOR DRAINS.

SHEET KEYNOTES

- SLOPED WALKING SURFACE
- FORWARD FOLDING BLEACHER SYSTEM AS SPECIFIED - SEE ELECTRICAL
- VOID SPACE
- 8"X8" STAIR RE. LANDSCAPE
- FLOOR DRAIN WITH 2" x 2" SWALE
- CUSTOM FABRICATED STAIR SYSTEM SEE DETAIL
- ELECTRIC WATER COOLERS SEE PLUMB. AND ELECT.
- FIRE EXTINGUISHER IN CABINET AS SPECIFIED
- 42" HIGH GUARDRAIL SEE DETAIL C3/AE-611
- PREMANUFACTURED TROPHY CASE - "PHOENICIAN" MODEL SHARIS, 41" HIG. 18" DIA. (7) AS SPEC. BY DISPLAY CASE CO. OF GILBERT, AZ. (800) 774-7191, G.A.E., 3 PER ROW FOR TOTAL OF 6. PROVIDE ELECT. AT BASE FOR LIGHTS.
- 1-1/4" O.D. SHED .40 STEEL HANDRAIL PAINTED
- HIC DOOR OPERATOR PUSH PAD MOUNTED ON 6" HIG. 50. X 36" HIGH POWDER COATED BOLLARD BY HUNTCO
- HIC DOOR OPERATOR PUSH PAD
- 42" HIGH GATED GUARDRAIL SEE DETAIL C4/AE-611 AND C1/AE-611

ASH #140
INSTALL KNOCK BOX @ 4" A.F.F. TO TOP OF BOX

ALLOWABLE METAL STUD WALL HEIGHTS FOR INTERIOR NON-BEARING PARTITIONS BASED ON LVL.

THE CONTRACTOR SHALL PROVIDE AND INSTALL ALL INTERIOR METAL STUD WALLS BASED ON THE FOLLOWING OFFERS:

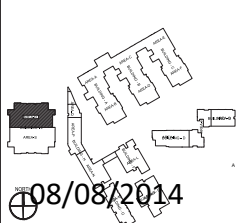
STD. LVL GAUGES/SPACING	ALLOWABLE HEIGHT
3482#12" G.C.	12'0" MAX.
4038#12" G.C.	12'4" MAX.
4702#12" G.C.	13'0" MAX.
5302#12" G.C.	13'6" MAX.
6038#12" G.C.	14'0" MAX.

*FOR WALLS EXCEEDING THESE HEIGHTS, PROVIDE AND INSTALL 1/4" x 2" (3) COLLEDED CHANNELS HORIZONTALLY @ 4' O.C. (VERT.), SERVED AND HELDED PER ENR-800-800 EN WRAP RECOMMENDATIONS.

PLAN SYMBOL LEGEND

- PARTITION TYPE SYMBOL REFERENCE SHEET AE-390
- WINDOW TYPE SYMBOL REFERENCE SHEET AE-XXX
- DOOR NUMBER REFERENCE SHEET AE-XXX

KEY PLAN



GYMNASIUM BUILDING J 1ST FLOOR PLAN AREA - R

ASA ARCHITECTS
1500 UNIVERSITY BLVD. SUITE 1000
DALLAS, TEXAS 75274
PHONE 972.337.0000 FAX 972.337.0001

Letter/Period/Slabline
Architectural Services
1500 UNIVERSITY BLVD. SUITE 1000
DALLAS, TEXAS 75274
PHONE 972.337.0000 FAX 972.337.0001

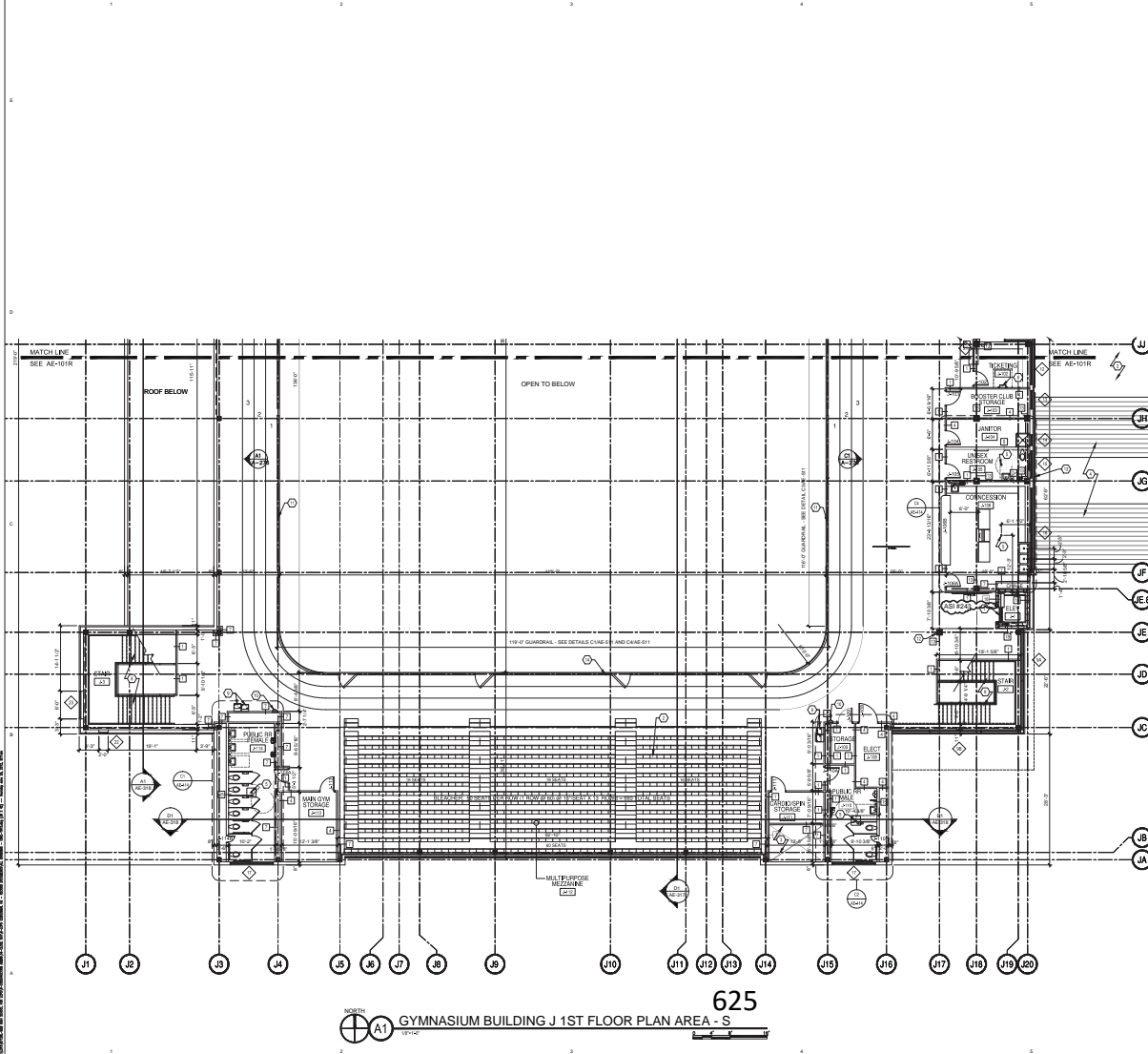
STATE OF NEW MEXICO
Architectural Services
02/15/10
REGISTERED ARCHITECT

A NEW HIGH SCHOOL
(DRAWINGS OF RECORD)

05/24/12

FOR LAS CRUCES PUBLIC SCHOOLS
LAS CRUCES, NEW MEXICO

PROJECT NO.	07100
DATE OF ISSUE	08/08/14
DESIGNED BY	ASA
CHECKED BY	TSM
DATE	08/08/14
SHEET TITLE:	
GYMNASIUM BUILDING J 1ST FLOOR PLAN AREA R	
SHEET NO.	
AE-101R	
Sheet of ...	



625
 NORTH
 A1 GYMNASIUM BUILDING J 1ST FLOOR PLAN AREA - S

GENERAL SHEET NOTES

1. 80' OF REFERENCE ELEVATION EQUALS 4181.70' MBL
2. ALL PLAN DIMENSIONS ARE TO FACE OF STUD OR CENTERLINE OF COLUMN UNLESS OTHERWISE NOTED
3. PROVIDE A WATERPROOF MEMBRANE AS SPECIFIED ON FLOORS IN ALL 1ST FLOOR ROOMS WITH FLOOR DRAINS.

SHEET KEYNOTES

1. SLOPED WALKING SURFACE
2. FORWARD FOLDING BLEACHER SYSTEM AS SPECIFIED - SEE ELECTRICAL.
3. VOID SPACE
4. SITE STAIR, RE: LANDSCAPE
5. FLOOR DRAIN WITH 2' X 2' SWALE
6. ROOF HATCH ACCESS LADDER SEE DETAIL ELEVATOR AS SPECIFIED
7. CUSTOM FABRICATED STAIR SYSTEM SEE DETAIL
8. ELECTRIC WATER COOLERS SEE PLUMB. AND ELECT.
10. FIRE EXTINGUISHER IN CABINET AS SPECIFIED
11. 42" HIGH GUARDRAIL, SEE DETAIL C1A6-S11
12. FURR-OUT COLUMN - FULL HEIGHT - WITH 58" TYPE 'C' CTR. RD. (PAINTED) OVER 2-1/2" STEEL STUDS (8 PER COLUMN MIN.)
13. 1-1/4" O.D. SHED 40 STEEL HANDRAIL PAINTED
14. 42" HIGH GATED GUARDRAIL SEE DETAIL C1A6-S11 AND C1A6-S11

ALLOWABLE METAL STUD WALL HEIGHTS FOR INTERIOR NON-BEARING PARTITIONS BASED ON LOAD

THE CONTRACTOR SHALL PROVIDE AND INSTALL ALL INTERIOR METAL STUD WALLS BASED ON THE FOLLOWING DATA:

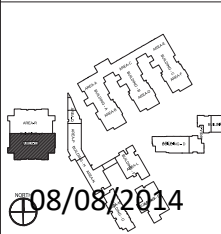
STUD BEARING CAPACITY	ALLOWABLE HEIGHT
30#/SQ' O.C.	150" MAX.
45#/SQ' O.C.	154" MAX.
60#/SQ' O.C.	158" MAX.
75#/SQ' O.C.	162" MAX.
90#/SQ' O.C.	174" MAX.

FOR WALLS EXCEEDING THESE HEIGHTS, PROVIDE AND INSTALL 1/4" X 1/4" CORRUGATED CHANNELS HORIZONTALLY @ 48" O.C. (VERT.), SCREWED AND BOLTED PER ASME B30.9 (8-1/2" MIN. REEF RECOMMENDATIONS)

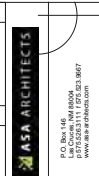
PLAN SYMBOL LEGEND

- PARTITION TYPE SYMBOL REFERENCE SHEET AE-300
- WINDOW TYPE SYMBOL REFERENCE SHEET AE-XXX
- DOOR NUMBER REFERENCE SHEET AE-XXX

KEY PLAN



08/08/2014



A NEW HIGH SCHOOL
 (DRAWINGS OF RECORD) 05/24/12
 FOR LAS CRUCES PUBLIC SCHOOLS
 LAS CRUCES, NEW MEXICO

PROJECT NO.	052412
DATE	05/24/12
PROJECT FILE	052412
DESIGNER	TSA
DRAWN BY	TSA
CHECKED BY	TSA
DATE	08/08/14
SCALE	AS SHOWN
SHEET TITLE	GYMNASIUM BUILDING J 1ST FLR PLAN AREA S
SHEET NO.	AE-101S
Sheet of	1

3' works for end → need bigger wheels for outside. (6)

Area Mantoyo - P

· Gym Floor - Cracking near Window

UV-damage

- Company says wrong cleaner used but they
try to do green cleaning

More trash cans needed across campus

Try to Recycle, but kids just end up using blue
bins for trash. However, except for blue color, not marked

Lecture Rooms aren't big enough PE Instructor (7)
PE Lecture Rooms not big enough; can't assign
a lecture to every

Gym: More room on opposite side for activities
Gym works well.

Pretty spread out campus → staying inside
going through campus → hot, cold, wind
etc.

- Athletic fields → fumble → maybe soil put
on sand. or may be maintenance.

- No complaints about concussions

≡ Enough Storage

- Problems w/ projection in Wrestling/Aerobics
- connection into wall not working

- No security issues

- Public walking through ~~Arch.~~ Walkway between
Arch. & Reg. Gym.

A NEW HIGH SCHOOL FOR LAS CRUCES PUBLIC SCHOOLS

DRAWINGS OF RECORD: MAY 24, 2012

VOLUME 1 (GENERAL INFORMATION AND COMMON SHEETS BY DISCIPLINE)

LAS CRUCES PUBLIC SCHOOLS
LAS CRUCES, NEW MEXICO

DISTRICT NUMBER: RFQP-08-09-07QP
PSFA PROJECT NUMBER: 06-024 AND 07-012
ASA PROJECT NUMBER: 07120L



BOARD OF EDUCATION

DR. CONNIE PHILLIPS	PRESIDENT
CHUCK DAVIS	VICE-PRESIDENT
SERENA SHOOP	SECRETARY
MARIA A. FLORES	MEMBER
DR. BONNIE VOTAW	MEMBER

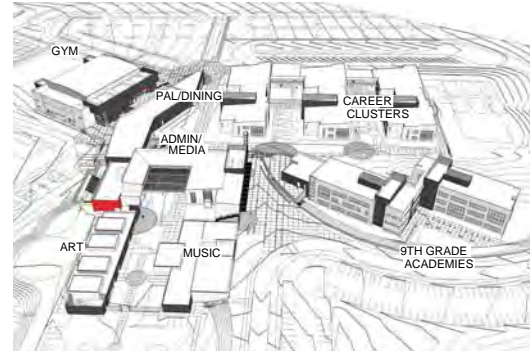
SUPERINTENDENT

STAN ROUNDS

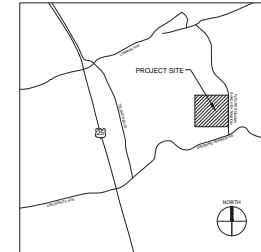
CONSTRUCTION MANAGER AT RISK



CONSULTANTS



LAS CRUCES, NM AREA MAP



P:\Projects\08-09-07QP\08-09-07QP-024-07-012\08-09-07QP-024-07-012-07120L.dwg, 08/08/2014 10:00:00 AM, User: jay.k.lee

Sughrue

A, B, C

Nothing environmentally related
" tied to HIP school
Recycling Bins in each common area

D

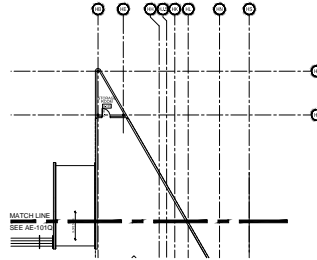
1
(2) Env. Related
No HIP Related
Recycling Bins each
floor

2
No To, Bitter
Recycling
Bin
on 2nd

SEE D3-G116
SEE AE-101Q

SEE AE-101Q
SEE AE-101P

SEE F-1010
SEE AE-1010



D3 ADMIN/MEDIA/DINING/PAL. BUILDING F.H. OVER ALL 1ST FLOOR PLAN

A3 ADMIN/MEDIA/DINING/PAL. BUILDING F.H. OVER ALL 1ST FLOOR PLAN

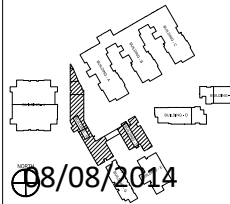
GENERAL SHEET NOTES

SHEET KEYNOTES



A NEW HIGH SCHOOL
 (DRAWINGS OF RECORD) 05/24/12
 for:
 LAS CRUCES PUBLIC SCHOOLS

KEY PLAN



NO.	DATE	DESCRIPTION	BY	CHKD.

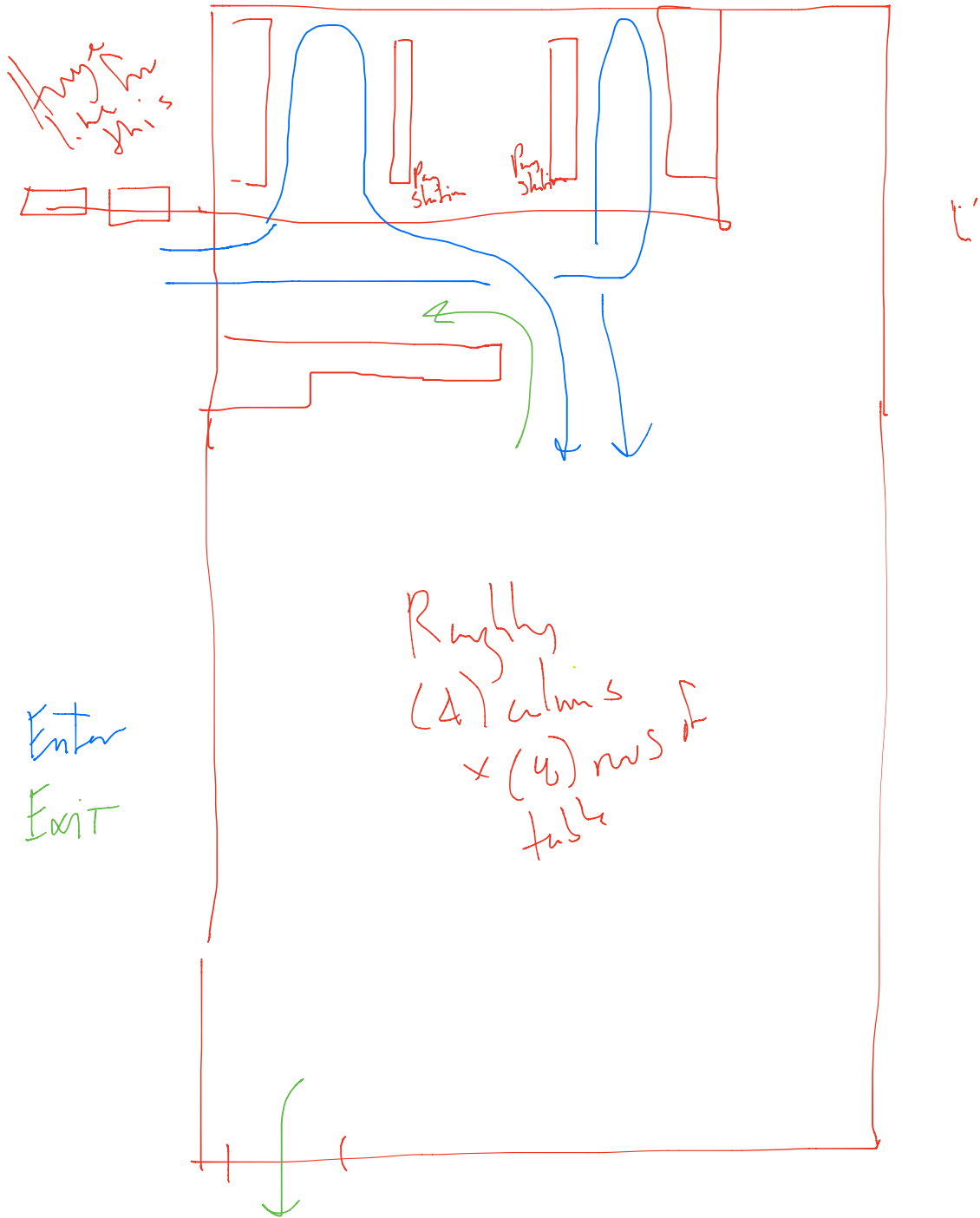
PROJECT NO.: 07-203
 CD SHEET NO.: 08-008
 DRAWN BY: SL-00
 CHECKED BY: CD

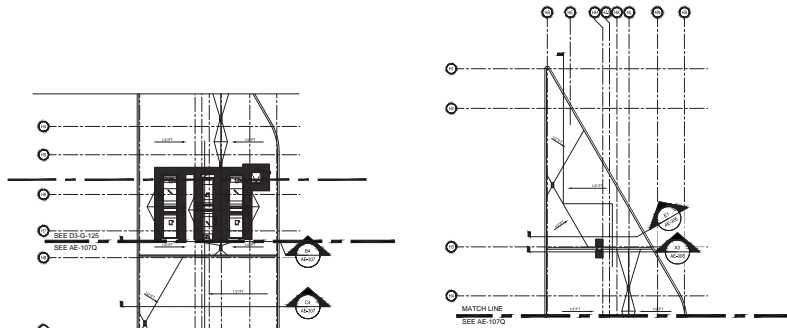
ADMIN/MEDIA
 DINING/PAL.
 BUILDING F.H. OVER
 ALL 1ST FLOOR PLAN

08/08/2014

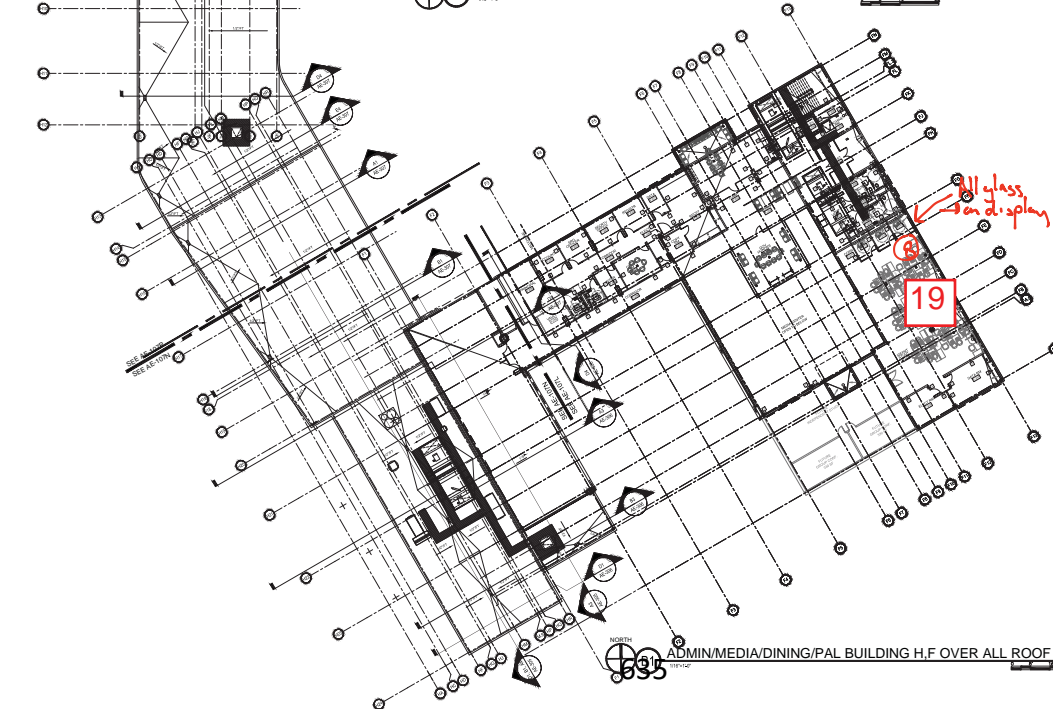
Observation Notes **① Cafeteria 10/23 11:40 -**

<p>12</p>				
<p>Kids coming in getting food Must sitting down - A few lining to eat elsewhere - Many who stop & windows outside are eating on the grass area - Security helping w/ chairs - moving them for cleanup Outside: kids eating on grass, i-banded Must out by 11:55 of cafeteria.</p>	<p>Comfortable w/ fresh air. Lights at on; shades raised to ap above daylight glass view glass division. Big Ass fans not on. - seems like that might create too much air for as low as they're mounted. - Security officer confined this → blows shift around only turn on when really stuffy. Also 15 tables underneath the cafeteria → kids sitting there too outside - Outside: some kids avoid sun & others sitting in it. Goal to have access to both outside - Also (16) tables across breezeway adjacent to library - 2 tables occupied @ 12:04 - Some of the shade reaches these tables</p>	<p>Some kids trying find way immediately that they don't want to then leave they exit cafeteria Students generally clustered in groups talking in courtyard over out to benches</p>	<p>Kitchen carts being rolled between cafeteria & APAC → Reaching that only observed → Traverse the concrete joints → Have to roll back & forth → hot food, anything formally prepared. → students to get around.</p>	<p>Students Security Kitchen staff & serving only (1) student helping.</p>





NORTH
 03 ADMIN/MEDIA/DINING/PAL BUILDING F.H OVER ALL ROOF PLANRCP



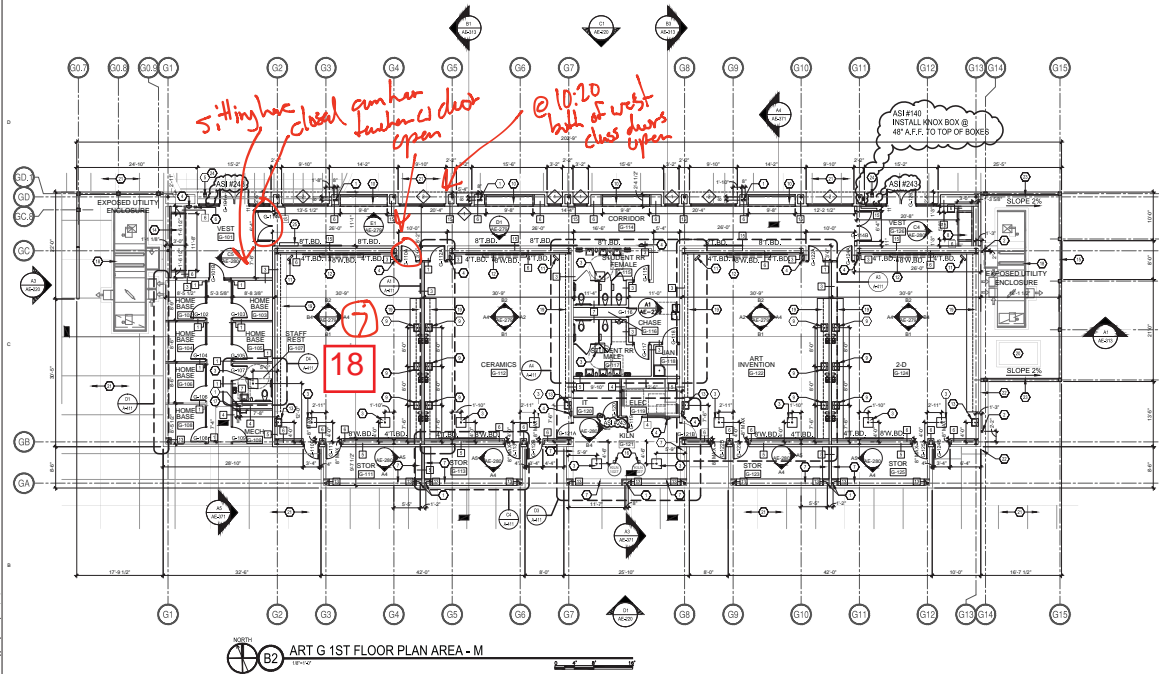
NORTH
 19 ADMIN/MEDIA/DINING/PAL BUILDING H.F OVER ALL ROOF PLAN

08/08/2014

NO.	DATE	BY	REVISION

PROJECT NO. 07-2012
 LOCATION
 DRAWN BY
 CHECKED BY
 SCALE

ADMIN/MEDIA
 DINING/PAL
 BUILDING H.F
 OVER ALL ROOFPLAN



ART G 1ST FLOOR PLAN AREA - M

- ### GENERAL SHEET NOTES
- 100'-0" REFERENCE ELEVATION EQUALS 4196.79' NILE
 - ALL PLAN DIMENSIONS ARE TO FACE OF STUD OR CENTERLINE OF COLUMN UNLESS OTHERWISE NOTED
 - 2'-0" TO BOTTOM OF WHITEBOARDS AND TACKBOARDS IN STUDS
 - REFER TO AF-100 FOR ADDITIONAL FINISH INFORMATION
 - REFER TO REFLECTED CEILING PLANS FOR LOCATIONS OF ALL TACKBOARDS IN CORRIDORS
 - REFER TO INTERIOR ELEVATIONS FOR TYPICAL LOCATIONS OF ALL TACKBOARDS IN CORRIDORS
 - CORRIDOR TACKBOARDS NOT ELEVATED OR NOTED OTHERWISE TO BE CENTERED ALONG LENGTH OF WALL
 - STRUCTURAL STEEL MEMBERS, JOIST BEAMS, ETC. - IN ROOMS THAT ARE FIRE RATED WITH GLYN GELCOUSE OR ARE OPENED TO STRUCTURE SHALL BE FIREPROOFED.

- ### SHEET KEYNOTES
- INTERNAL ROOF DRAIN AND OVERFLOW - 4" DIA. REFERENCE FLOORING
 - EXTERNAL ROOF DOWNSPOUT LOCATION, 4" DIA. (MIN.) EXTERNAL PLUMBING FOR TIE-IN TO STORM DRAINAGE
 - 24" X 24" SWIRLE, SLOPE AT 1/8" TO FLOOR DRAIN
 - FIRE EXTINGUISHER IN CABINET AS SPECIFIED, REFERENCE DETAIL CB48-512
 - HIC DOOR OPERATOR PULSH PAD MOUNTED ON 6" X 4" SD. X 3/8" HIC POWDER COATED BOLLARD BY HANTCO
 - HIC DOOR OPERATOR PULSH PAD
 - 1" THICK PLYWOOD ADJUSTABLE SHELVES WITH PLASTIC LAMINATE FINISH AND HARDWOOD EDGES ON HEAVY DUTY STANDARDS AND BRACKETS
 - DISPLAY CASE, 72" H X 72" W X 36" D, MODIFIED MODEL NUMBER 394 AS MANUFACTURED BY CLARIDGE, HARRISON ARKANSAS, 800-484-4610, WWW.CLARIDGEPRODUCTS.COM OR APPROVED EQUAL
 - SINGLE COMPARTMENT SINK
 - DISPLAY CASE, MODEL NUMBER 396 AS MANUFACTURED BY CLARIDGE, HARRISON ARKANSAS, 800-484-4610, WWW.CLARIDGEPRODUCTS.COM OR APPROVED EQUAL
 - TV MONITOR MOUNTING BRACKET, BOTTOM AT 7' 4" AFF
 - MOTORIZED PROJECTOR SCREEN AS SPECIFIED
 - TV MONITOR MOUNTING BRACKET, BOTTOM AT 7' 4" AFF
 - SINGLE COMPARTMENT SINK WITH SOLID INTERCEPTOR
 - DISPLAY CASE, 72" H X 72" W X 36" D, MODIFIED MODEL NUMBER 397 AS MANUFACTURED BY CLARIDGE, HARRISON ARKANSAS, 800-484-4610, WWW.CLARIDGEPRODUCTS.COM OR APPROVED EQUAL
 - SINGLE SINKING GATE WITH METAL PANELING TO MATCH SURROUNDING METAL PANEL SYSTEM, RE. DETAIL BA48-512
 - MIN. 10FT 2" ACCESS CLEARANCE TO BE MANUFACTURED BY SKITT MFG., PORTLAND OREGON, 503-774-6000, WWW.SKITT.COM OR APPROVED EQUAL
 - ROOF HATCH ACCESS LADDER, SEE DETAIL EA48-580
 - MECHANICAL UNIT AND PAD, REFERENCE MECHANICAL
 - BUILT-IN CASEWORK, SEE INTERIOR ELEVATIONS FOR MORE INFORMATION
 - HOTTON AND PAD, REFERENCE MECHANICAL
 - CONCRETE WALK, REFERENCE CIVIL
 - CONCRETE APPROX. REFERENCE CIVIL
 - 8" CONCRETE CURB (THIS WALL ONLY), REFERENCE STRUCTURAL
 - PROXIMITY READER ON BOLLARD
 - VIDEO MONITOR

- ### PLAN SYMBOL LEGEND
- PARTITION TYPE SYMBOL, REFERENCE SHEET AE-390
 - WINDOW TYPE SYMBOL, REFERENCE SHEET AE-245
 - DOOR NUMBER, REFERENCE SHEET AE-245 & AE-607
 - ALLOWABLE METAL STUD WALL HEIGHTS/SPACING/NOSEBOARD PARTING BASED ON LVL
- THE CONTRACTOR SHALL PROVIDE AND INSTALL ALL INTERIOR METAL STUD WALLS BASED ON THE FOLLOWING CRITERIA:
- | STUD BEE GAUGE/SPACING | ALLOWABLE HEIGHT |
|------------------------|------------------|
| 18"X18" O.C. | 12'-0" MAX. |
| 16"X16" O.C. | 10'-0" MAX. |
| 14"X14" O.C. | 10'-0" MAX. |
| 12"X12" O.C. | 10'-0" MAX. |
| 10"X10" O.C. | 10'-0" MAX. |
- * FOR WALLS EXCEEDING THESE HEIGHTS PROVIDE AND INSTALL 1/2" X 1/2" COLD ROLLED CHANNELS (NOMINALLY @ 8" O.C. INT'L) @ 10' MAX. HEIGHTS. SEE HELD PER SPM 300A FOR RAMP RECOMMENDATIONS.

KEY PLAN

08/08/2014

ART BUILDING G FLOOR PLAN AREA - M

ASB-1011M Sheet of ...

ASA ARCHITECTS

1500 W. 10TH AVENUE, SUITE 1000 DENVER, CO 80202

Letter/Period/Abbreviation

STATE OF NEW MEXICO

REGISTERED PROFESSIONAL ARCHITECT

02/15/10

A NEW HIGH SCHOOL

(DRAWINGS OF RECORD) 05/24/12

FOR: **LAS CRUCES PUBLIC SCHOOLS**

LAS CRUCES, NEW MEXICO

PROJECT NO. 07000

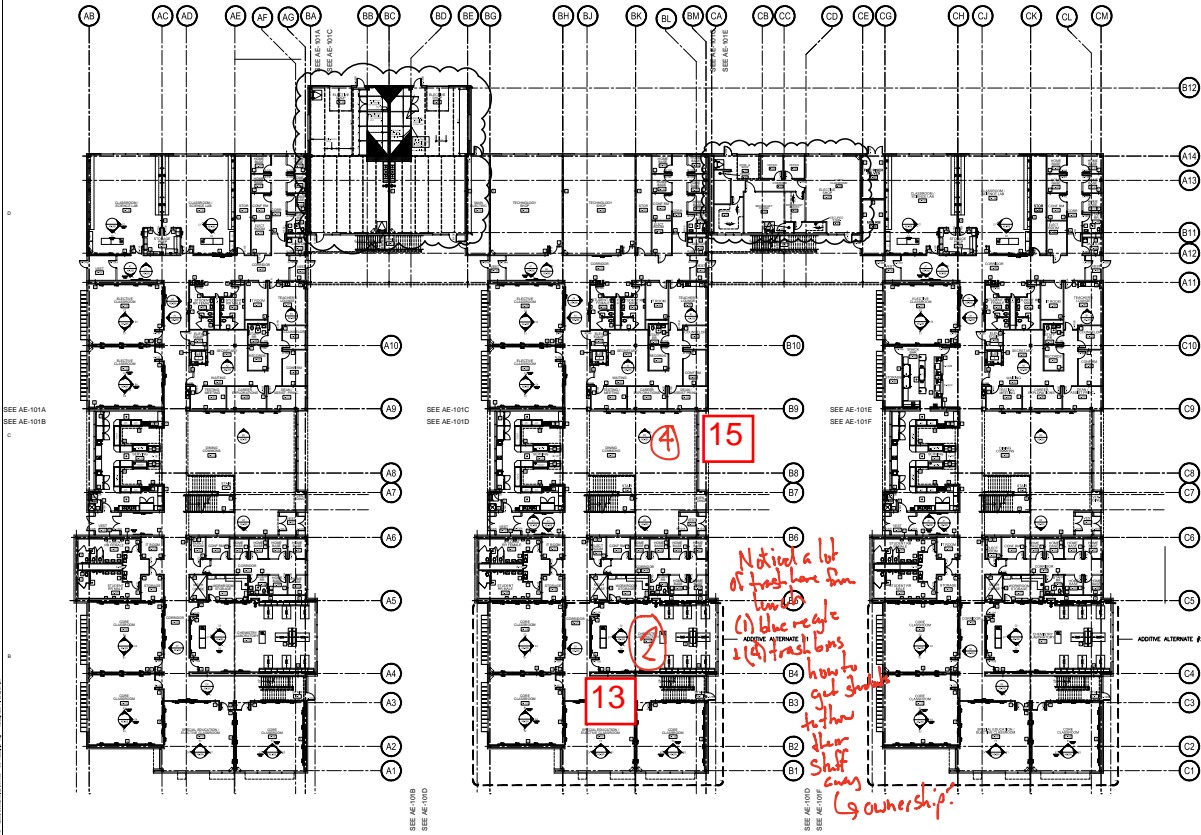
DATE: 08/08/2014

DESIGNER: ASA ARCHITECTS

PROJECT: ART BUILDING G FLOOR PLAN AREA - M

SHEET NO. ASB-1011M

SHEET TITLE: ART BUILDING G FLOOR PLAN AREA - M



SEE AE-101A
SEE AE-101B

SEE AE-101C
SEE AE-101D

SEE AE-101E
SEE AE-101F

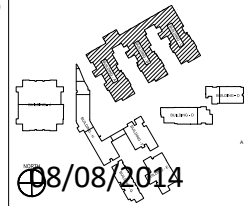


CAREER CLUSTERS BUILDING A,B,C OVER ALL 1ST FLOOR PLAN

639

○ SHEET KEYNOTES

KEY PLAN



08/08/2014



A NEW HIGH SCHOOL
(DRAWINGS OF RECORD) 08/24/12
for:
LAS CRUCES PUBLIC SCHOOLS
LAS CRUCES, NEW MEXICO

DATE	FOR	BY	DESCRIPTION

CAREER CLUSTERS
BUILDING A,B,C
OVER ALL
1ST FLOOR PLAN

