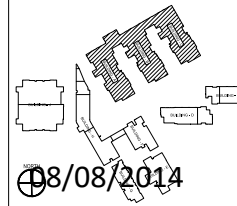


GENERAL SHEET NOTES

○ SHEET KEYNOTES

KEY PLAN



ASA ARCHITECTS
 ARCHITECTS
 P.O. Box 146
 Las Cruces, NM 88001
 505.252.3111 | FTS.252.9667
 www.asa-architects.com

Dickter/Perini/Garabini
 ARCHITECTS
 1000 N. 11th St.
 Las Cruces, NM 88001
 505.252.3111



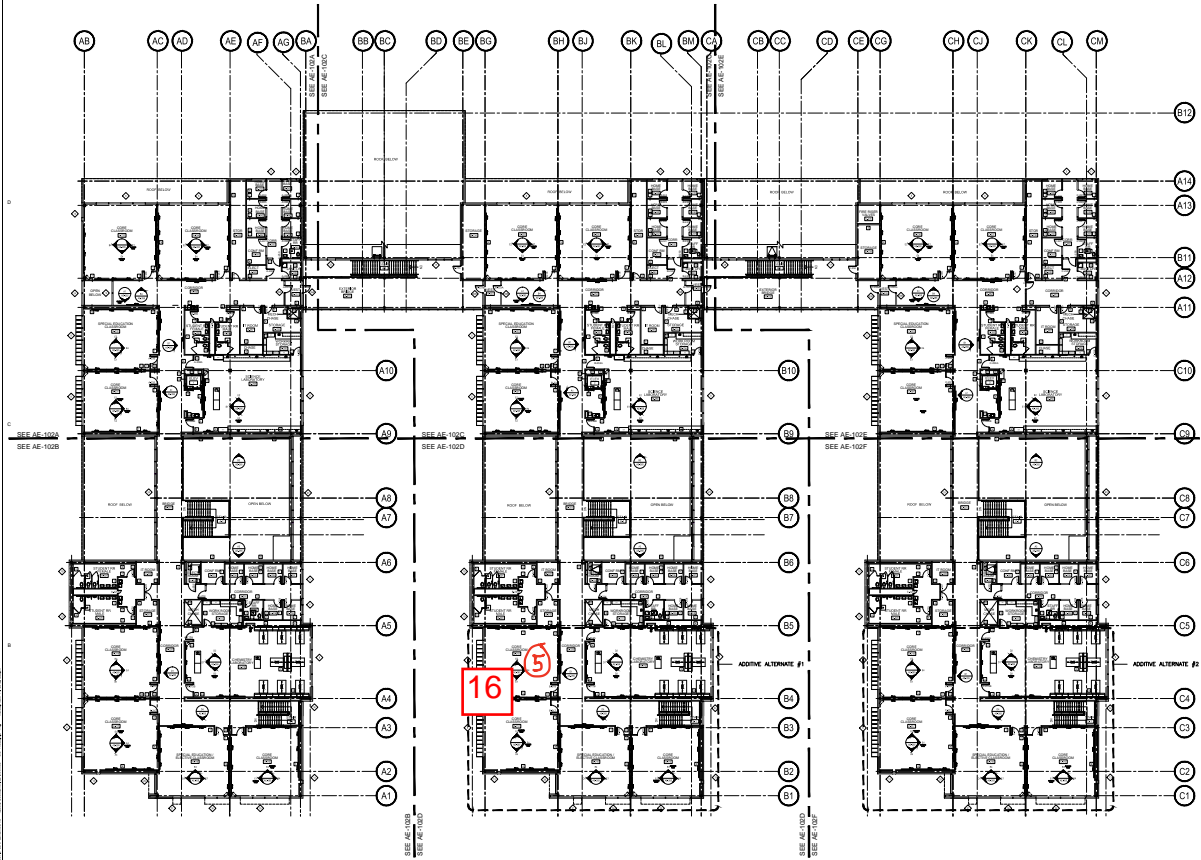
A NEW HIGH SCHOOL
 (DRAWINGS OF RECORD) 0022412
 for:
 LAS CRUCES PUBLIC SCHOOLS

NO.	DATE	DESCRIPTION	BY	CHKD.

CAREER CLUSTERS
 BUILDING A,B,C
 OVER ALL
 2ND FLOOR PLAN

PROJECT NO. 072024
 CD/DRG FILE: 072024
 DRAWN BY: CH
 CHECKED BY: CH
 DATE PLOTTED: 08/08/2014

SHEET NO. G-118
 Sheet of



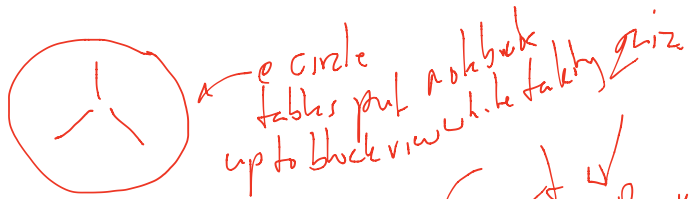
CAREER CLUSTERS BUILDING A,B,C OVER ALL 2ND FLOOR PLAN

644

08/08/2014

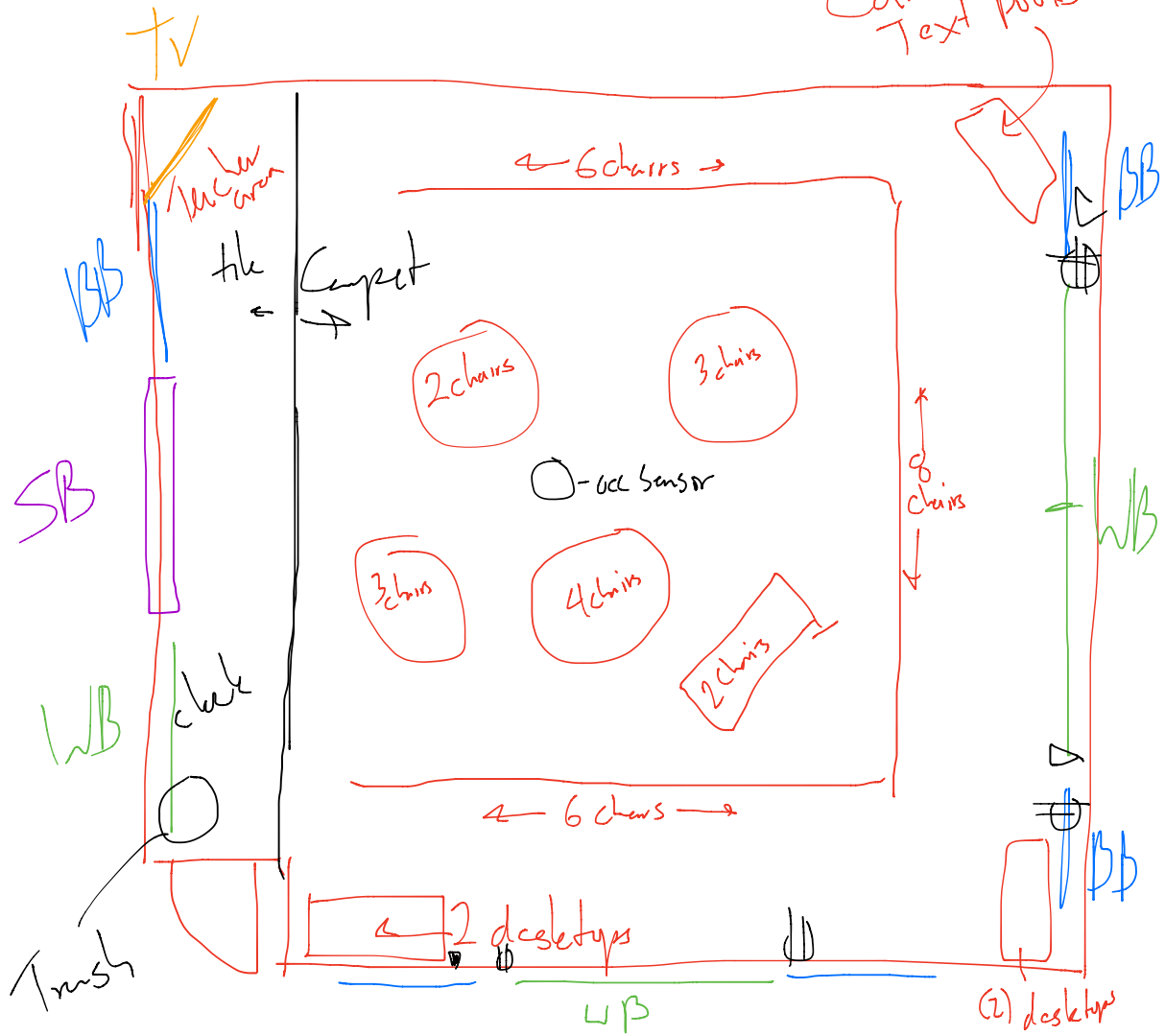
Observation Notes 5) 12:25- 3218 16

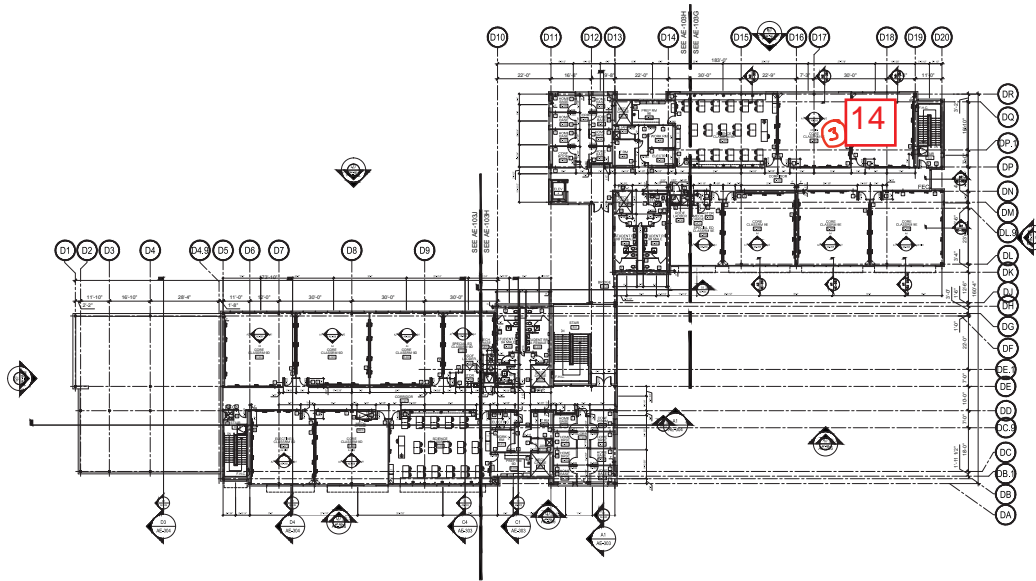
<p>Ä É ÄÅDÄÄÄÄÄÄÄÄÄÄÄÄ ÄÄÄÄÄÄÄÄÄÄÄÄÄÄÄÄÄÄ DÄÄÄÄÄÄÄÄÄÄÄÄÄÄÄÄÄÄ ÄÄÄÄÄÄÄÄÄÄÄÄÄÄÄÄÄÄ</p>	<p>É ÇÄÄÄÄÄÄÄÄÄÄÄÄÄÄÄÄÄ ÄÄÄÄÄÄÄÄÄÄÄÄÄÄÄÄÄÄÄÄÄÄ DÄÄÄÄÄÄÄÄÄÄÄÄÄÄÄÄÄÄ</p>	<p>É ÇÄÄÄÄÄÄÄÄÄÄÄÄÄÄÄÄÄ ÄÄÄÄÄÄÄÄÄÄÄÄÄÄÄÄÄÄÄÄÄÄ DÄÄÄÄÄÄÄÄÄÄÄÄÄÄÄÄÄÄÄÄÄÄ ÄÄÄÄÄÄÄÄÄÄÄÄÄÄÄÄÄÄÄÄÄÄ</p>	<p>A É ÄÄÄÄÄÄÄÄÄÄÄÄÄÄÄÄÄÄ ÄÄÄÄÄÄÄÄÄÄÄÄÄÄÄÄÄÄÄÄÄÄ ÄÄÄÄÄÄÄÄÄÄÄÄÄÄÄÄÄÄÄÄÄÄ ÄÄÄÄÄÄÄÄÄÄÄÄÄÄÄÄÄÄÄÄÄÄ</p>	<p>Ä É ÄÄÄÄÄÄÄÄÄÄÄÄÄÄÄÄÄÄ ÄÄÄÄÄÄÄÄÄÄÄÄÄÄÄÄÄÄÄÄÄÄ ÄÄÄÄÄÄÄÄÄÄÄÄÄÄÄÄÄÄÄÄÄÄ ÄÄÄÄÄÄÄÄÄÄÄÄÄÄÄÄÄÄÄÄÄÄ</p>
<p>Instructing from front of room - for class period. - Initially writing/studying notes - Then a game of jeopardy to help them study for a quiz. Using smart board. - Then taking quiz; then grading - Then accessing a YouTube video via the Smartboard</p>	<p>Shades all lowered ; lights fall on. Desk lights off. Door open Lights off for jeopardy Teacher voice probably carries into hall a bit. Generally can see what is on the screen from the back of the room. Shades + lights off → plenty dark enough to see smart board. But No direct sun. Pretty loud during some of Jeopardy - cheering + righteous outrage. Barely hear or feel HVAC system Cramped, but enough room between tables for teacher to walk amongst the during quiz. During quiz, generally did not hear any noise from corridor through open door. Can hear teacher's voice down to</p>	<p>Jeopardy teams working together to get the answers + provide questions. Towards end of quiz tries difficult for students already done to keep still. Though least whispering.</p>	<p>OUTLETS are not under white boards or smart boards • No floor outlets • Chairs do make it easier to break up in groups can wheel around. • Back packs/bags on floor beside chair over the table (2) white boards had stuff written on them; (2) were clean. Nothing hung up that had to do w/ sustainability, green, energy/water conservation, environmentalism. A few students charging their devices in wall outlets However: heard in a big class yet when I've seen the TV on or being used.</p>	<p>29 students 13 girls / 16 boys Mix of short sleeve, long sleeve + pullovers; Mix of pants + shorts (1) female adult teacher. - Believe the room is a bit crowded w/ 4.00 # of students</p>



circle tables put notebook up to block view while taking quiz

Card ✓
Text Books



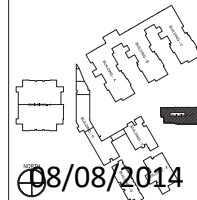


NORTH
 9TH GRADE ACAD BUILDING D OVER ALL 3RD FLOOR PLAN
 047

GENERAL SHEET NOTES

○ SHEET KEYNOTES

KEY PLAN



ASA ARCHITECTS
 ARCHITECTS
 P.O. Box 146
 Las Cruces, NM 88001
 505.625.3111 | FAX: 505.967
 www.asa-architects.com

Dickter/Perini/Garabini
 ARCHITECTS
 1000 N. 1st St., Suite 100
 Las Cruces, NM 88001
 505.625.3111 | FAX: 505.967

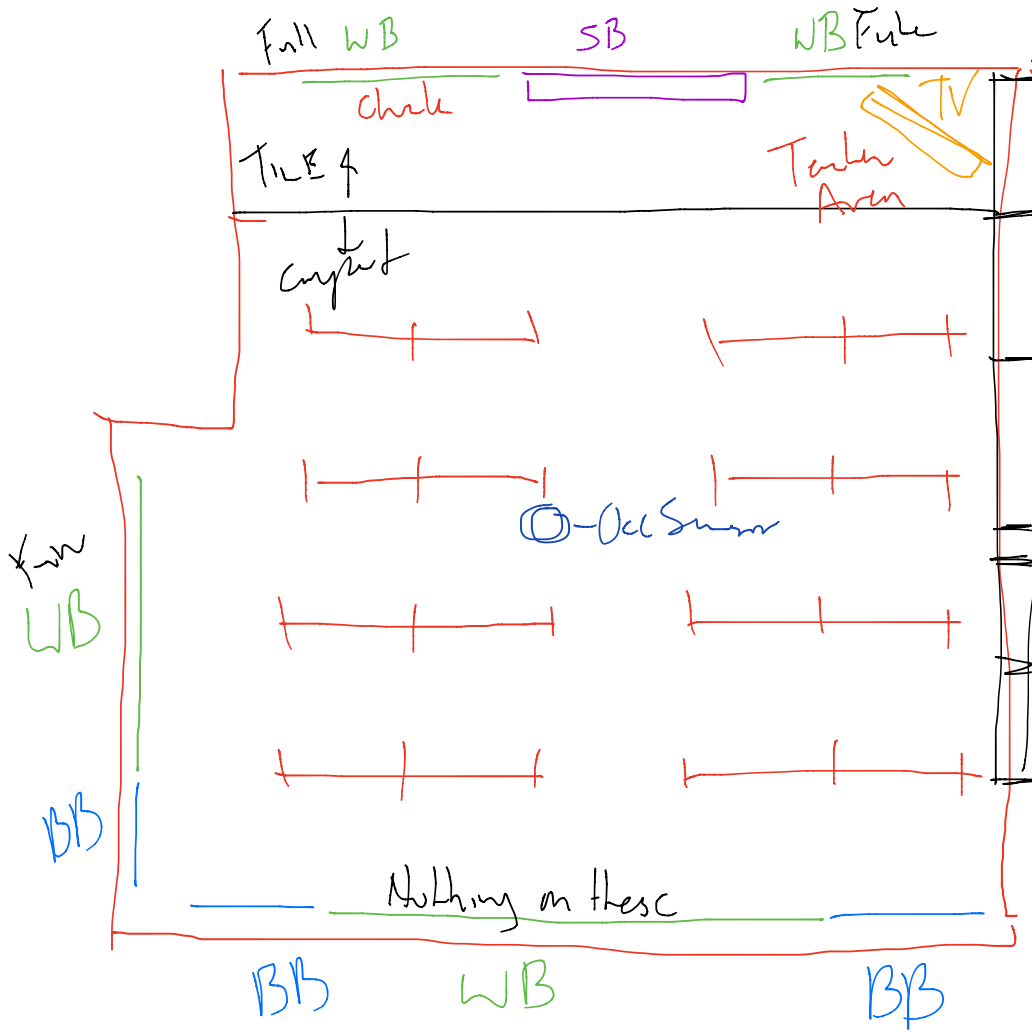


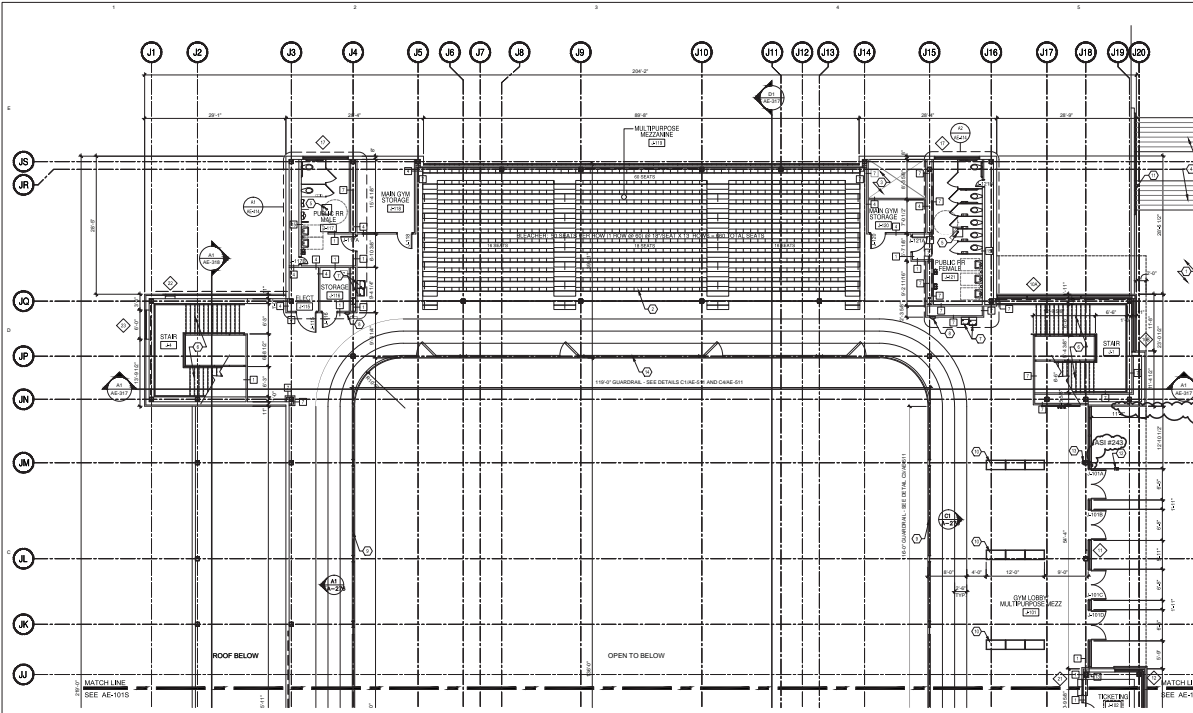
A NEW HIGH SCHOOL
 (DRAWINGS OF RECORD) 08/24/12
 for:
 LAS CRUCES PUBLIC SCHOOLS

NO.	DATE	BY	REVISION

PROJECT NO.: 07-204
 CDD DWP FILE: 00000
 DRAWN BY: S.J.
 CHECKED BY: C.H.
 SHEET TITLE: 9TH GRADE ACAD BUILDING D OVER ALL 3RD FLOOR PLAN

SHEET NO.
G-121
 Sheet of





Main gym upper perimeter Htg: OCC. Sensor
 All of curving gym Htg: OCC. Sensor

GENERAL SHEET NOTES

- 85'-0" REFERENCE ELEVATION EQUALS 4181.70' MSL
- ALL PLAN DIMENSIONS ARE TO FACE OF STUD OR CENTERLINE OF COLUMN UNLESS OTHERWISE NOTED
- PROVIDE A WATERPROOF MEMBRANE AS SPECIFIED ON FLOORS IN ALL 1ST FLOOR ROOMS WITH FLOOR DRAINS.

SHEET KEYNOTES

- SLOPED WALKING SURFACE
- FORWARD FOLDING BLEACHER SYSTEM AS SPECIFIED - SEE ELECTRICAL
- VOID SPACE
- STAIR: STAIR, RE. LANDSCAPE
- FLOOR DRAIN WITH 2" x 2" SWALE
- CUSTOM FABRICATED STAIR SYSTEM SEE DETAIL
- ELECTRIC WATER COOLERS SEE PLUMB. AND ELECT.
- FIRE EXTINGUISHER IN CABINET AS SPECIFIED
- 42" HIGH GUARDRAIL SEE DETAIL C3/AE-611
- PREMANUFACTURED TROPHY CASE - "PHOENICIAN" MODEL SHARS, 41" H" 31" W" 21" D AS SPECIFIED BY DISPLAY CASE CO. OF GILBERT, AZ. (800) 774-7191, G.A.E. - 3 PER ROW FOR TOTAL #. PROVIDE EJECT AT BASE FOR LIGHTS.
- 1-1/4" O.D. SHED 40 STEEL HANDRAIL PAINTED
- H.C. DOOR OPERATOR PUSH PAD MOUNTED ON 8" H" SQ. X 36" HIGH POWDER COATED BOLLARD BY HUNTCO
- H.C. DOOR OPERATOR PUSH PAD
- 42" HIGH GATED GUARDRAIL SEE DETAIL C/AE-611 AND C1/AE-611

ASH #140
 INSTALL KNOCK BOX @ 48" A.F.F. TO TOP OF BOX

ALLOWABLE METAL STUD WALL HEIGHTS FOR INTERIOR NON-WALKING PARTITIONS BASED ON LVL

THE CONTRACTOR SHALL PROVIDE AND INSTALL ALL INTERIOR METAL STUD WALLS BASED ON THE FOLLOWING OFFERS:

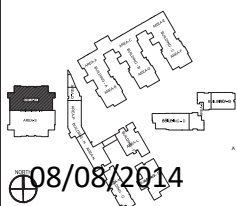
STD. LVL GAUGES/SPACING	ALLOWABLE HEIGHT
3482#11 G.C.	15'0" MAX.
403#11 G.C.	15'4" MAX.
4703#11 G.C.	15'8" MAX.
5303#11 G.C.	16'2" MAX.
603#11 G.C.	17'4" MAX.

*FOR WALLS EXCEEDING THESE HEIGHTS, PROVIDE AND INSTALL 1-1/2" X 12" SOLID RED DIMBERS HORIZONTALLY @ 48" O.C. (VERT.), SERVED AND HELD PER DSM-1000 EN WHOP RECOMMENDATION.

PLAN SYMBOL LEGEND

- PARTITION TYPE SYMBOL REFERENCE SHEET AE-390
- WINDOW TYPE SYMBOL REFERENCE SHEET AE-XXX
- DOOR NUMBER REFERENCE SHEET AE-XXX

KEY PLAN



GYMNASIUM BUILDING J 1ST FLOOR PLAN AREA - R

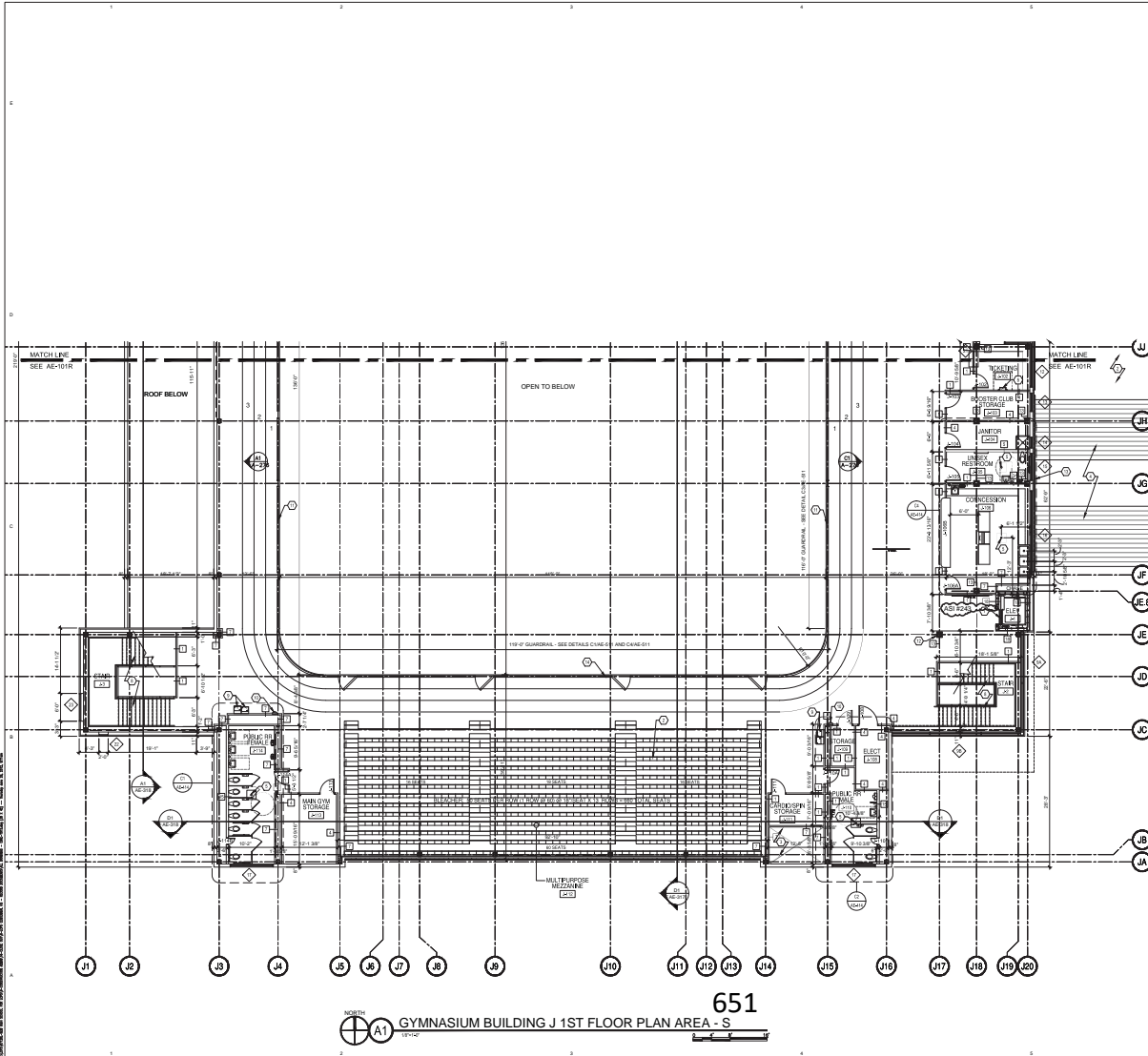
ASA ARCHITECTS
 1515 W. GARDEN BLVD. SUITE 100
 LAS VEGAS, NV 89102
 PHONE: 702.735.1000
 FAX: 702.735.1001
 WWW.ASAARCHITECTS.COM

Letter/Period/Slab/Unit
 1515 W. GARDEN BLVD. SUITE 100
 LAS VEGAS, NV 89102
 PHONE: 702.735.1000
 FAX: 702.735.1001
 WWW.ASAARCHITECTS.COM

**A NEW HIGH SCHOOL
 (DRAWINGS OF RECORD) 05/24/12**

FOR:
LAS CRUCES PUBLIC SCHOOLS
 LAS CRUCES, NEW MEXICO

DATE	DESCRIPTION
PROJECT NO.	07385
DATE	05/24/12
DRAWING FILE	05-24-12-01
DESIGNER	TRB
CHECKER	TRB
DATE	08/08/2014
SHEET TITLE	GYMNASIUM BUILDING J 1ST FLR PLAN AREA R
SHEET NO.	AE-101R
Scale of	1/8" = 1'-0"



GENERAL SHEET NOTES

1. 80' OF REFERENCE ELEVATION EQUALS 4' @ 1/2" = 1" SCALE
2. ALL PLAN DIMENSIONS ARE TO FACE OF STUD OR CENTERLINE OF COLUMN UNLESS OTHERWISE NOTED
3. PROVIDE A WATERPROOF MEMBRANE AS SPECIFIED ON FLOORS IN ALL 1ST FLOOR ROOMS WITH FLOOR DRAINS.

SHEET KEYNOTES

1. SLOPED WALKING SURFACE
2. FORWARD FOLDING BLEACHER SYSTEM AS SPECIFIED - SEE ELECTRICAL.
3. VOID SPACE
4. SITE STAIR, RE: LANDSCAPE
5. FLOOR DRAIN WITH 2' X 2' SWALE
6. ROOF HATCH ACCESS LADDER SEE DETAIL ELEVATOR AS SPECIFIED
7. CUSTOM FABRICATED STAIR SYSTEM SEE DETAIL
8. ELECTRIC WATER COOLERS SEE PLUMB. AND ELECT.
9. FIRE EXTINGUISHER IN CABINET AS SPECIFIED
10. 42" HIGH GUARDRAIL, SEE DETAIL C1A6-S11
12. FURR-OUT COLUMN - FULL HEIGHT - WITH 58" TYPE 'C' CTR. RD. (PAINTED) OVER 2-1/2" STEEL STUDS (8 PER COLUMN MIN.)
13. 1-1/4" O.D. SHED 40 STEEL HANDRAIL PAINTED
14. 42" HIGH GATED GUARDRAIL SEE DETAIL C1A6-S11 AND C1A6-S11

ALLOWABLE METAL STUD WALL HEIGHTS FOR INTERIOR NON-BEARING PARTITIONS BASED ON LOAD

THE CONTRACTOR SHALL PROVIDE AND INSTALL ALL INTERIOR METAL STUD WALLS BASED ON THE FOLLOWING DATA:

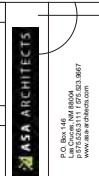
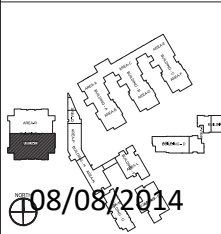
STUD BEARING CAPACITY	ALLOWABLE HEIGHT
30#/SQ' O.C.	10'0" MAX.
45#/SQ' O.C.	15'0" MAX.
60#/SQ' O.C.	18'0" MAX.
75#/SQ' O.C.	21'0" MAX.
90#/SQ' O.C.	24'0" MAX.

FOR WALLS EXCEEDING THESE HEIGHTS PROVIDE AND INSTALL 1/2" X 1/2" CORRUGATED CHANNELS HORIZONTALLY @ 48" O.C. (VERT.), SCREWED AND BOLTED PER ISMA #300 (SEE AISC RECOMMENDATIONS)

PLAN SYMBOL LEGEND

- PARTITION TYPE SYMBOL REFERENCE SHEET AE-300
- WINDOW TYPE SYMBOL REFERENCE SHEET AE-XXX
- DOOR NUMBER REFERENCE SHEET AE-XXX

KEY PLAN



**A NEW HIGH SCHOOL
(DRAWINGS OF RECORD)** 05/24/12
for
LAS CRUCES PUBLIC SCHOOLS
LAS CRUCES, NEW MEXICO

PROJECT NO.	052412
DATE	05/24/12
PROJECT FILE	052412
DESIGNER	ASA
CHECKER	ASA
DATE	08/08/14
PROJECT TITLE	GYMNASIUM BUILDING J 1ST FLR PLAN AREA S
SHEET NO.	AE-101S
Sheet of	1

LOBBY
CLASS 000
SP/DOC 3X SF (0)
AREA 227 SF
OCC.LOAD 3X

STORAGE
CLASS 000
SP/DOC 300 SF (1)
AREA 133 SF
OCC.LOAD 1

A1 AUX GYM OCCUPANCY CALCULATIONS

ELECTIVE
CLASS 000
SP/DOC 300 SF (1)
AREA 180 SF
OCC.LOAD 1

WRESTLING
CLASS 000
SP/DOC 60 SF (1)
AREA 120 SF
OCC.LOAD 1

WRESTLING
CLASS 000
SP/DOC 60 SF (1)
AREA 120 SF
OCC.LOAD 1

STORAGE
CLASS 000
SP/DOC 300 SF (1)
AREA 95 SF
OCC.LOAD 1

DATA
CLASS 000
SP/DOC 300 SF (1)
AREA 95 SF
OCC.LOAD 1

STORAGE
CLASS 000
SP/DOC 300 SF (1)
AREA 95 SF
OCC.LOAD 1

RESTROOM
CLASS 000
SP/DOC 300 SF (1)
AREA 95 SF
OCC.LOAD 1

CORRIDOR
CLASS 000
SP/DOC 3X SF (1)
AREA 109 SF
OCC.LOAD 3X

RESTROOM
CLASS 000
SP/DOC 3X SF (1)
AREA 95 SF
OCC.LOAD 1

RESTROOM
CLASS 000
SP/DOC 3X SF (1)
AREA 95 SF
OCC.LOAD 1

RESTROOM
CLASS 000
SP/DOC 3X SF (1)
AREA 95 SF
OCC.LOAD 1

LOCKER ROOM
CLASS 000
SP/DOC 60 SF (1)
AREA 144 SF
OCC.LOAD 3X

SLEEPING ROOM
CLASS 000
SP/DOC 3X SF (1)
AREA 121 SF
OCC.LOAD 3X

RESTROOM
CLASS 000
SP/DOC 3X SF (1)
AREA 134 SF
OCC.LOAD 3X

SLEEPING ROOM
CLASS 000
SP/DOC 3X SF (1)
AREA 134 SF
OCC.LOAD 3X

RESTROOM
CLASS 000
SP/DOC 3X SF (1)
AREA 134 SF
OCC.LOAD 3X

STORAGE
CLASS 000
SP/DOC 300 SF (1)
AREA 127 SF
OCC.LOAD 1



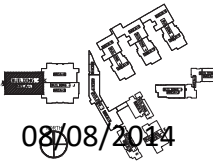
Letter/Period/Abstr
Architects & Interiors
3000 Alameda Blvd. Ste. 200
New Orleans, LA 70114
Phone: 504.581.4100
Fax: 504.581.4101



**A NEW HIGH SCHOOL
(DRAWINGS OF RECORD) 05/24/12**
for LAS CRUCES PUBLIC SCHOOLS
LAS CRUCES, NEW MEXICO

DATE:	04/20/12
PROJECT:	012012
DATE:	04/20/12
PROJECT:	012012
DATE:	04/20/12
PROJECT:	012012

PROJECT: 012012
DATE: 04/20/12
SHEET TITLE: AUXILIARY GYM BUILDING K OCCUPANCY AREA - T
SHEET NO: G-002
Scale: of ...



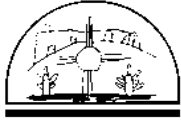
A NEW HIGH SCHOOL FOR LAS CRUCES PUBLIC SCHOOLS

DRAWINGS OF RECORD: MAY 24, 2012

VOLUME 1 (GENERAL INFORMATION AND COMMON SHEETS BY DISCIPLINE)

LAS CRUCES PUBLIC SCHOOLS
LAS CRUCES, NEW MEXICO

DISTRICT NUMBER: RFQP-08-09-07QP
PSFA PROJECT NUMBER: 06-024 AND 07-012
ASA PROJECT NUMBER: 07120L



**LAS CRUCES
PUBLIC SCHOOLS**

BOARD OF EDUCATION

DR. CONNIE PHILLIPS	PRESIDENT
CHUCK DAVIS	VICE-PRESIDENT
SERENA SHOOP	SECRETARY
MARIA A. FLORES	MEMBER
DR. BONNIE VOTAW	MEMBER

SUPERINTENDENT

STAN ROUNDS

CONSTRUCTION MANAGER AT RISK



CONSULTANTS

Structural

Bakker/Perini/Reichlin
architects • interior • landscape • planning • signage
1000 University Blvd. Suite 100
Las Cruces, NM 88001
Tel: 505.325.1111

Mechanical Electrical & Plumbing

BRENNEMAN & PANTONE
MECHANICAL • ELECTRICAL • PLUMBING
1000 University Blvd. Suite 100
Las Cruces, NM 88001
Tel: 505.325.1111

Civil

Breneman & Pantone
MECHANICAL • ELECTRICAL • PLUMBING
1000 University Blvd. Suite 100
Las Cruces, NM 88001
Tel: 505.325.1111

GYM

PAL/DINING **20** CAREER CLUSTERS

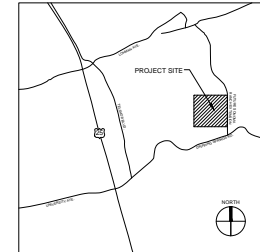
ADMIN/MEDIA **1**

ART

MUSIC

2 **3** **22**
21 9TH GRADE ACADEMIES

LAS CRUCES, NM AREA MAP



Bakker/Perini/Reichlin
architects • interior • landscape • planning • signage
1000 University Blvd. Suite 100
Las Cruces, NM 88001
Tel: 505.325.1111

ASA ARCHITECTS
1000 University Blvd. Suite 100
Las Cruces, NM 88001
Tel: 505.325.1111
www.asa-architects.com

08/28/2014

17. Appendix F: Energy and Water Performance Data

District	High School	#	Climate Zone	Grades	Site Size (Acres)	Square Footage/Enrollment				
District	High School	#	Climate Zone	Grades	Site Size (Acres)	Total Sq. Ft.	Perm. Sq. Ft.	Port. Sq. Ft.	% Port. Sq. Ft.	Enrollment
Alam.	Alamogordo HS	1	3	9-12	40	338296	329623	8673	2.56%	1637
Deming	Deming HS	2	3	9-12	36.3	276435	266139	10296	4%	1416
Dexter	Dexter HS	3	3	9-12	13	121534	121534	0	0%	303
Gadsden	Chaparral HS	4	3	9-12	77	217367	217367	0	0%	1079
Gadsden	Gadsden HS	5	3	9-12	65	270810	267226	3584	1%	1597
Gadsden	Santa Teresa HS	6	3	9-12	55	250295	248615	1680	1%	1247
Hatch	Hatch Valley HS	7	3	9-12	55.5	166024	166024	0	0%	363
Las Cruces	Centennial HS	8	3	9-12	84	344654	344654	0	0%	1090
Las Cruces	Las Cruces HS	9	3	9-12	35.78	302474	289418	13056	4%	1787
Las Cruces	Mayfield HS	10	3	9-12	102	274011	266843	7168	3%	1767
Las Cruces	Onate HS	11	3	9-12	50	281096	281096	0	0%	1851
Lordsburg	Lordsburg HS	12	3	9-12	12.85	81436	80316	1120	1%	157
Roswell	Goddard HS	13	3	9-12	25	237394	237394	0	0%	1033
Roswell	Roswell HS	14	3	9-12	42.5	247004	240364	6640	3%	1347
Ruidoso	Ruidoso HS	15	3	9-12	39.68	170054	164970	5084	3%	569
APS	Albuquerque HS	16	4	9-12	42	289173	269461	19712	7%	1707
APS	Atrisco Heritage Acad. HS	17	4	9-12	50	458414	458414	0	0%	2413
APS	Cibola HS	18	4	9-12	60	361631	313247	48384	13%	1817
APS	Del Norte HS	19	4	9-12	41	299642	277242	22400	7%	1182
APS	Eldorado HS	20	4	9-12	54	378674	362882	15792	4%	1882
APS	Highland HS	21	4	9-12	35	374427	365751	8676	2%	1598
APS	La Cueva HS	22	4	9-12	42.13	387114	387114	0	0%	1851
APS	Manzano HS	23	4	9-12	38	299011	266713	32298	11%	1799
APS	Rio Grande HS	24	4	9-12	33	294689	273185	21504	7%	1459
APS	Sandia HS	25	4	9-12	53	350970	341114	9856	3%	1883
APS	Valley HS	26	4	9-12	30	288799	278047	10752	4%	1335

District	High School	#	Climate Zone	Grades	Site Size (Acres)	Square Footage/Enrollment				
District	High School	#	Climate Zone	Grades	Site Size (Acres)	Total Sq. Ft.	Perm. Sq. Ft.	Port. Sq. Ft.	% Port. Sq. Ft.	Enrollment
APS	Volcano Vista HS NW	27	4	9-12	14.38	454940	454940	0	0%	2159
APS	West Mesa	28	4	9-12	36	355994	312090	43904	12%	1551
Bernalillo	Bernalillo HS	29	4	9-12	44.73	234821	229445	5376	2%	804
Cobre	Cobre HS	30	4	9-12	33.32	149231	151807	2576	2%	341
Los Lunas	Los Lunas HS	31	4	9-12	67.29	240747	224199	16548	7%	1222
Los Lunas	Valencia HS	32	4	9-12	87.84	205569	205569	0	0%	1002
Portales	Portales HS	33	4	9-12	40	211933	199453	12480	6%	759
Santa Rosa	Santa Rosa HS	34	4	9-12	15.8	118555	118555	0	0%	168
Socorro	Socorro HS	35	4	9-12	90.06	136527	136527	0	0%	491
TorC	Hot Springs HS	36	4	9-12	25	138455	138455	0	0%	367
Tucumcari	Tucumcari HS	37	4	9-12	37	119277	119277	0	0%	257
Zuni	Zuni HS	38	4	9-12	98.7	116224	116224	0	0%	335

District	High School	#	2012-2013 Energy Values					
District	High School	#	Electric (KBTU)	Gas (KBTU)	Total Energy (KBTU)	Total Energy EUI	Estimated (or Actual) Portable KBTU	Estimated (or Actual) Permanent KBTU
Alamogordo	Alamogordo HS	1	24337749	4070170	28407919	83.97	143755	28264164
Deming	Deming HS	2	11620883	3895820	15516703	56.13	170656	15346046
Dexter	Dexter HS	3	1884314	4467301	6351615	52.26	0	6351615
Gadsden	Chaparral HS	4	5892091	2886388	8778479	40.39	0	8778479
Gadsden	Gadsden HS	5	6203737		6203737	22.91	59405	6144332
Gadsden	Santa Teresa HS	6	4374365	6669817	11044182	44.12	27846	11016336
Hatch	Hatch Valley HS	7	5385307	4956700	10342007	62.29	0	10342007
Las Cruces	Centennial HS	8	16186072	8137900	24323972	70.58	0	24323972
Las Cruces	Las Cruces HS	9	6091156	4677000	10768156	35.60	216403	10551753
Las Cruces	Mayfield HS	10	7548468	5100000	12648468	46.16	118810	12529659
Las Cruces	Onate HS	11	6627026	2056000	8683026	30.89	0	8683026

District	High School	#	2012-2013 Energy Values					
District	High School	#	Electric (KBTU)	Gas (KBTU)	Total Energy (KBTU)	Total Energy EUI	Estimated (or Actual) Portable KBTU	Estimated (or Actual) Permanent KBTU
Lordsburg	Lordsburg HS	12	1204964	3000278	4205241	51.64	18564	4186677
Roswell	Goddard HS	13	6280855	4858886	11139741	46.93	0	11139741
Roswell	Roswell HS	14	5681874	5802242	11484116	46.49	110058	11374058
Ruidoso	Ruidoso HS	15	2539998	7871180	10411178	61.22	84267	10326911
APS	Albuquerque HS	16	8770568	10534000	19304568	66.76	326726	18977841
APS	Atrisco Heritage Acad. HS	17	17999727	24150000	42149727	91.95	0	42149727
APS	Cibola HS	18	8905757	14696200	23601957	65.27	801965	22799992
APS	Del Norte HS	19	11094236	15957000	27051236	90.28	371280	26679956
APS	Eldorado HS	20	8696865	17646000	26342865	69.57	261752	26081113
APS	Highland HS	21	5471164	15065000	20536164	54.85	143805	20392359
APS	La Cueva HS	22	8364864	9569000	17933864	46.33	0	17933864
APS	Manzano HS	23	7789918	12061000	19850918	66.39	535339	19315579
APS	Rio Grande HS	24	7,387,630	13736000	21123630	71.68	356429	20767201
APS	Sandia HS	25	7,013,997	13231000	20244997	57.68	163363	20081634
APS	Valley HS	26	6,117,287	12067000	18184287	62.97	178214	18006072
APS	Volcano Vista HS NW	27	12,237,644	14345000	26582644	58.43	0	26582644
APS	West Mesa	28	8,285,569	18446000	26731569	75.09	727709	26003860
Bernalillo	Bernalillo HS	29	4,480,063	9171800	13651863	58.14	89107	13562756
Cobre	Cobre HS	30	2,805,742	4470187	7275929	48.76	42697	7233232
Los Lunas	Los Lunas HS	31	6,004,461	9624000	15628461	64.92	274283	15354178
Los Lunas	Valencia HS	32	6,745,312	10469000	17214312	83.74	0	17214312
Portales	Portales HS	33	2205120	3065992	5271112	24.87	206856	5064256
Santa Rosa	Santa Rosa HS	34	2324563	313893	2638456	22.26	0	2638456
Socorro	Socorro HS	35	3076017	1956698	5032715	36.86	0	5032715
TorC	Hot Springs HS	36	523190	3052916	3576106	25.83	0	3576106
Tucumcari	Tucumcari HS	37	4470591	5142349	9612940	80.59	0	9612940
Zuni	Zuni HS	38	2293772	0	2293772	19.74	0	2293772

District	High School	#	2012-2013 Water Values						
District	High School	#	Water/ Sewer (gal)	Irr. (gal)	Total Water (gal)	Water/ Sewer WUI	Irr. WUI (Site)	Total Water WUI (Building)	Total Water WUI (Site)
Alamogordo	Alamogordo HS	1	3289930	25418073	28708003	9.73	14.59	84.86	16.48
Deming	Deming HS	2	558229699	161213	558390912	2019.39	0.10	2019.97	353.14
Dexter	Dexter HS	3	2303000	411000	2714000	18.95	0.73	22.33	4.79
Gadsden	Chaparral HS	4	22208		22208	0.10		0.10	0.01
Gadsden	Gadsden HS	5							
Gadsden	Santa Teresa HS	6	13146		13146	0.05		0.05	0.01
Hatch	Hatch Valley HS	7	2238413		2238413	13.48		13.48	0.93
Las Cruces	Centennial HS	8	25790000		25790000	74.83		74.83	7.05
Las Cruces	Las Cruces HS	9	4079000	6491000	10570000	13.49	4.16	34.95	6.78
Las Cruces	Mayfield HS	10	36048000	15269000	51317000	131.56	3.44	187.28	11.55
Las Cruces	Ocate HS	11	1846000	52829000	54675000	6.57	24.26	194.51	25.10
Lordsburg	Lordsburg HS	12	4588	4146	8734	0.06	0.01	0.11	0.02
Roswell	Goddard HS	13	28756314	1212966	29969280	121.13	1.11	126.24	27.52
Roswell	Roswell HS	14	2506498	1212966	3719463.9	10.15	0.66	15.06	2.01
Ruidoso	Ruidoso HS	15	995027		995027	5.85		5.85	0.58
APS	Albuquerque HS	16	143132844		143132844	494.97		494.97	78.24
APS	Atrisco Heritage Acad. HS	17	17115736		17115736	37.34		37.34	7.86
APS	Cibola HS	18	1451868		1451868	4.01		4.01	0.56
APS	Del Norte HS	19	5164938		5164938	17.24		17.24	2.89
APS	Eldorado HS	20	2864840		2864840	7.57		7.57	1.22
APS	Highland HS	21	12868592		12868592	34.37		34.37	8.44
APS	La Cueva HS	22	2546940		2546940	6.58		6.58	1.39
APS	Manzano HS	23	9830944		9830944	32.88		32.88	5.94
APS	Rio Grande HS	24	2081683		2081683	7.06		7.06	1.45
APS	Sandia HS	25	10269428		10269428	29.26		29.26	4.45
APS	Valley HS	26	11825132		11825132	40.95		40.95	9.05
APS	Volcano Vista HS NW	27	26917528		26917528	59.17		59.17	42.97
APS	West Mesa	28	16053576		16053576	45.10		45.10	10.24

District	High School	#	2012-2013 Water Values						
District	High School	#	Water/ Sewer (gal)	Irr. (gal)	Total Water (gal)	Water/ Sewer WUI	Irr. WUI (Site)	Total Water WUI (Building)	Total Water WUI (Site)
Bernalillo	Bernalillo HS	29	4532470		4532470	19.30		19.30	2.33
Cobre	Cobre HS	30	10574560		10574560	70.86		70.86	7.29
Los Lunas	Los Lunas HS	31	8983400		8983400	37.31		37.31	3.06
Los Lunas	Valencia HS	32	2746510		2746510	13.36		13.36	0.72
Portales	Portales HS	33	30054000		30054000	141.81		141.81	17.25
Santa Rosa	Santa Rosa HS	34	567000		567000	4.78		4.78	0.82
Socorro	Socorro HS	35	260320	20875	281195	1.91	0.01	2.06	0.07
TorC	Hot Springs HS	36	470000		470000	3.39		3.39	0.43
Tucumcari	Tucumcari HS	37	749830	2711000	3460830	6.29	1.68	29.02	2.15
Zuni	Zuni HS	38			0	0			0

18. Appendix G: Data Logger Data

Table 18.1: HOBO Datalogger Measurements – Temperature and RH

HOBO Datalogger Measurements (Occupied Hours Summary)																	
Data Logger Summary			Interior Space Temperature °F							Relative Humidity %				Temperature Extremes		Room Perimeter Type	Notes
Count	Serial Number	Room Location	Average	Standard Deviation	Maximum	Minimum	% Time over 74	% Time Below 68	Total >74 and <68	Average	Standard Deviation	Maximum	Minimum	Date of Maximum Temp.	Date of Minimum Temp.		
1	10067888	A117- Classroom	70.86	1.36	73.75	66.54	0.00%	4.35%	4.35%	25.00	6.76	44.36	15	11/11/2013 16:26	11/27/2013 10:11	Southwest	
2	10173743	A135-Science Classroom	70.40	1.87	74.10	63.97	0.04%	7.37%	7.42%	27.24	6.43	44.04	15	10/30/2013 11:06	11/27/2013 10:06	Northwest	
3	10173699	A212-Science Classroom	71.64	1.48	75.31	68.25	5.97%	0.00%	5.97%	26.13	6.41	41.69	15	11/4/2013 14:45	11/14/2013 11:00	East	
4	10173711	A244-Office	70.33	3.23	74.45	62.43	1.19%	24.68%	25.87%	28.50	6.83	44.33	15	11/26/2013 13:40	11/28/2013 9:00	North	
5	2417099	B116-Classroom	71.83	1.54	78.10	66.71	4.60%	3.41%	8.01%	21.95	5.89	40.62	15	10/26/2013 17:43	11/28/2013 8:58	South	
6	10173688	B132-Classroom	71.17	1.20	74.79	68.76	0.51%	0.00%	0.51%	25.87	6.99	46.44	15	10/26/2013 17:23	11/25/2013 4:58	West	
7	10067918	B218-Classroom	72.23	1.85	76.53	67.91	20.55%	0.26%	20.80%	26.13	6.72	42.67	15	11/12/2013 16:26	11/25/2013 2:46	West	
8	10173702	C118-Classroom	70.41	1.29	72.55	66.88	0.00%	5.63%	5.63%	24.54	6.72	43.49	15	10/26/2013 17:14	11/27/2013 12:21	West	
9	10173685	C159-Office	71.71	2.10	75.83	63.11	12.87%	4.35%	17.22%	25.25	6.06	42.6	15	10/27/2013 12:12	11/28/2013 8:57	East	
10	10173700	C231-Classroom	72.47	1.92	76.53	66.71	21.11%	4.35%	25.45%	24.69	6.30	41.56	15	11/15/2013 16:25	11/27/2013 11:25	West	
11	10173687	D119-Science Classroom	73.87	1.55	80.74	70.65	37.55%	0.00%	37.55%	22.74	6.00	40.44	15	11/11/2013 16:40	11/25/2013 5:50	South	
12	10173701	D126-Classroom	71.91	1.69	75.66	67.56	9.97%	2.43%	12.40%	27.14	6.69	43.67	15	10/30/2013 11:33	11/30/2013 7:58	North	
13	10067905	D146-Office	70.75	1.67	73.75	65.85	0.00%	7.50%	7.50%	24.93	6.36	40.23	15	10/29/2013 16:04	11/29/2013 11:39	Interior	
14	10067885	D160-Classroom	72.60	2.17	80.56	66.19	32.27%	3.75%	36.02%	22.62	6.02	38.46	15	11/11/2013 16:56	11/28/2013 8:31	Southeast	

HOBO Datalogger Measurements (Occupied Hours Summary)

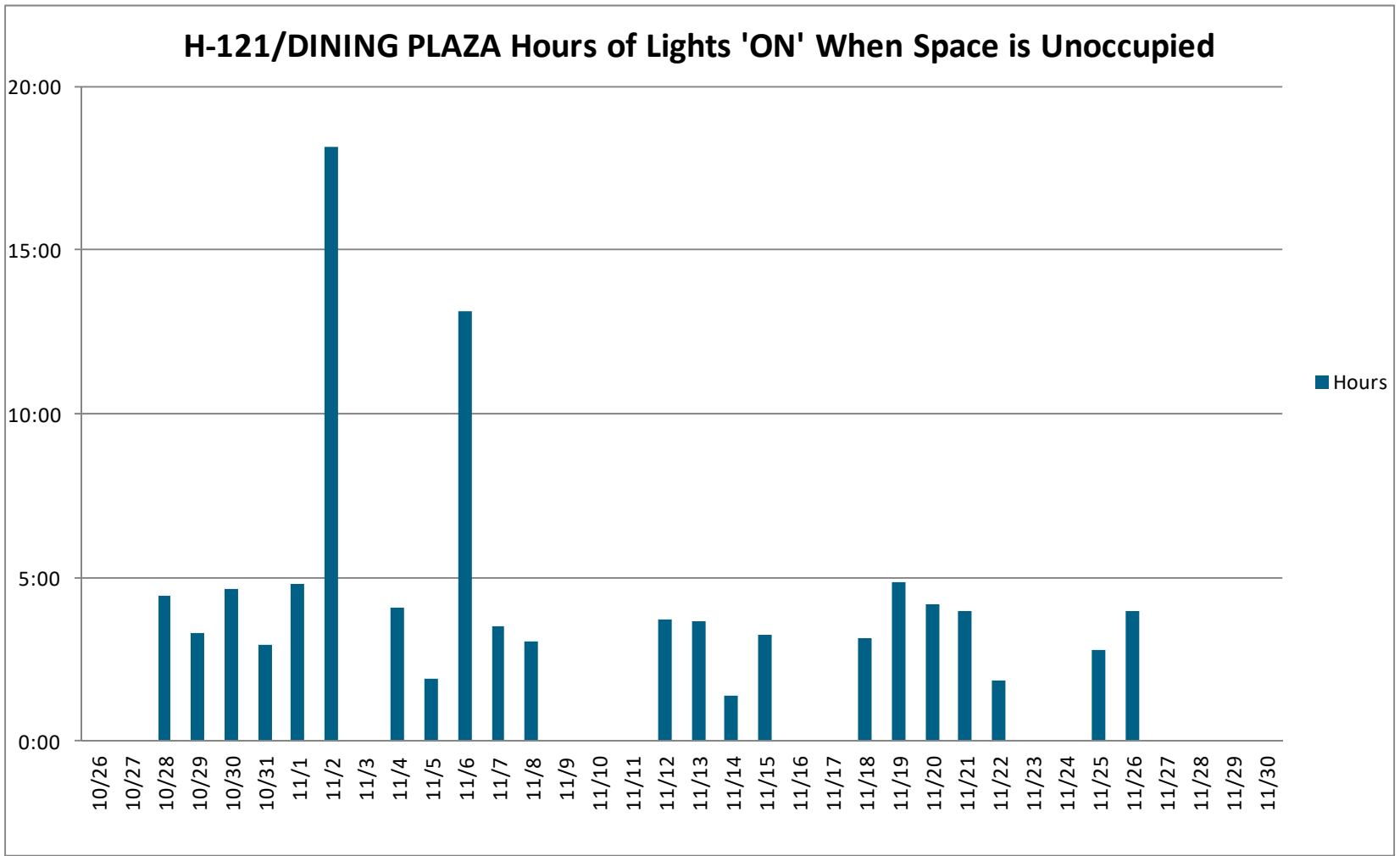
Data Logger Summary			Interior Space Temperature °F							Relative Humidity %				Temperature Extremes		Room Perimeter Type	Notes
Count	Serial Number	Room Location	Average	Standard Deviation	Maximum	Minimum	% Time over 74	% Time Below 68	Total >74 and <68	Average	Standard Deviation	Maximum	Minimum	Date of Maximum Temp.	Date of Minimum Temp.		
15	10173731	D204-Asst Principal Office	73.05	2.08	81.44	67.39	40.54%	3.79%	44.33%	24.70	5.80	37.59	15	11/11/2013 18:08	11/25/2013 3:13	South	
16	10173708	D235-Dept Head Office	69.59	3.77	73.58	56.23	0.00%	23.40%	23.40%	29.79	6.77	41.66	15	11/18/2013 17:03	11/28/2013 9:43	Northwest	
17	10173716	D250-Classroom	71.71	1.33	74.45	68.25	1.19%	0.00%	1.19%	27.05	6.25	48.31	15	10/29/2013 15:05	11/30/2013 7:55	North	
18	10067878	D251-Sm Grp Classroom	70.76	1.46	73.75	67.22	0.00%	5.07%	5.07%	27.37	6.67	41.48	15	10/30/2013 15:37	11/30/2013 8:27	North	
19	10067921	D262-Office	66.85	1.99	70.82	59.85	0.00%	67.31%	67.31%	28.77	7.11	47.69	15	10/26/2013 19:01	11/25/2013 4:46	Northwest	
20	10173724	D279-Classroom	72.07	3.14	78.80	63.28	33.08%	10.61%	43.69%	28.07	6.75	43.83	15	11/11/2013 17:57	11/25/2013 3:07	South	
21	10173722	D306-Office	71.71	1.33	74.45	68.25	1.19%	0.00%	1.19%	27.05	6.25	48.31	15	10/29/2013 15:05	11/30/2013 7:55	East	
22	10173678	D319-Science Classroom	73.13	1.72	81.09	68.08	29.88%	0.00%	29.88%	23.62	5.75	38.09	15	11/11/2013 18:05	11/25/2013 4:10	South	
23	10173735	D323-Classroom Springer	72.49	2.05	76.35	67.22	24.98%	2.73%	27.71%	27.92	6.26	42.42	15	11/22/2013 15:33	11/25/2013 4:13	North	
24	10173718	D342-Office	71.60	1.11	73.58	67.91	0.00%	0.17%	0.17%	26.30	6.34	41.44	15	10/26/2013 22:58	11/29/2013 14:08	Interior	Logger Data at 10 min interval
25	10173726	D356-Classroom	72.55	2.94	84.83	63.80	35.34%	8.74%	44.08%	25.10	6.48	41.12	15	11/11/2013 17:16	11/25/2013 4:06	Southeast	
26	10173707	D359-Classroom	72.96	2.04	79.15	66.19	39.47%	1.19%	40.66%	23.68	5.93	38.48	15	11/11/2013 17:18	11/25/2013 6:38	South	
27	10173677	E111-Choir Office	72.01	1.66	75.48	66.71	7.93%	4.81%	12.74%	23.40	5.86	39.27	15	11/11/2013 20:38	11/24/2013 9:38	South	
28	2417094	E119-Band Room Classroom	71.60	1.52	74.27	66.02	0.92%	4.96%	5.87%	23.74	5.54	38.45	15	11/10/2013 22:02	11/28/2013 6:22	Southeast	
29	10173676	F120-Media Center	72.19	1.81	75.31	65.00	15.98%	4.81%	20.79%	25.87	5.83	39.77	15	10/26/2013 19:48	11/25/2013 5:08	West	

HOBO Datalogger Measurements (Occupied Hours Summary)																	
Data Logger Summary			Interior Space Temperature °F							Relative Humidity %				Temperature Extremes		Room Perimeter Type	Notes
Count	Serial Number	Room Location	Average	Standard Deviation	Maximum	Minimum	% Time over 74	% Time Below 68	Total >74 and <68	Average	Standard Deviation	Maximum	Minimum	Date of Maximum Temp.	Date of Minimum Temp.		
30	10173679	F213-Faculty Office	71.00	1.47	74.45	65.34	0.99%	0.50%	1.49%	25.24	6.08	42.61	15	10/27/2013 19:23	11/25/2013 3:43	Interior	
31	10173674	F226-Principal's Office	70.50	1.97	74.10	63.63	0.04%	10.83%	10.87%	26.80	5.97	40.04	15	10/30/2013 17:43	11/28/2013 9:13	North	
32	10173675	F248-Nurse's Office	72.81	1.43	79.50	69.45	24.84%	0.00%	24.84%	24.88	5.75	37.89	15	11/22/2013 12:22	11/28/2013 8:57	East	
33	10173680	G102-Office Shelby Black	69.97	1.94	73.06	63.63	0.00%	16.33%	16.33%	27.47	6.21	39.9	15	10/26/2013 0:00	11/28/2013 9:50	West	
34	10173682	G110-Art Studio	71.56	2.41	76.53	64.14	13.47%	10.70%	24.17%	26.63	5.90	38.66	15	11/3/2013 19:26	11/28/2013 9:36	South	
35	10173681	H117-Cafeteria Office	74.71	1.61	80.91	65.17	67.86%	0.81%	68.67%	22.22	6.21	44.07	15	11/3/2013 21:50	11/13/2013 13:20	Interior	
36	10173683	H121-Dining Room	70.40	1.71	76.18	64.48	1.24%	11.04%	12.28%	26.67	6.93	45.04	15	11/2/2013 18:40	11/25/2013 4:20	East	
37	10067906	H134-Drama Classroom	70.65	3.03	76.70	62.25	11.51%	21.18%	32.69%	25.44	6.38	41.04	15	11/7/2013 17:30	11/28/2013 9:00	Northwest	
38	10067883	J034-Phys Ed Treatment	73.68	1.01	76.35	71.00	32.65%	0.00%	32.65%	25.66	6.50	44.33	15	10/26/2013 10:14	10/28/2013 20:34	East	

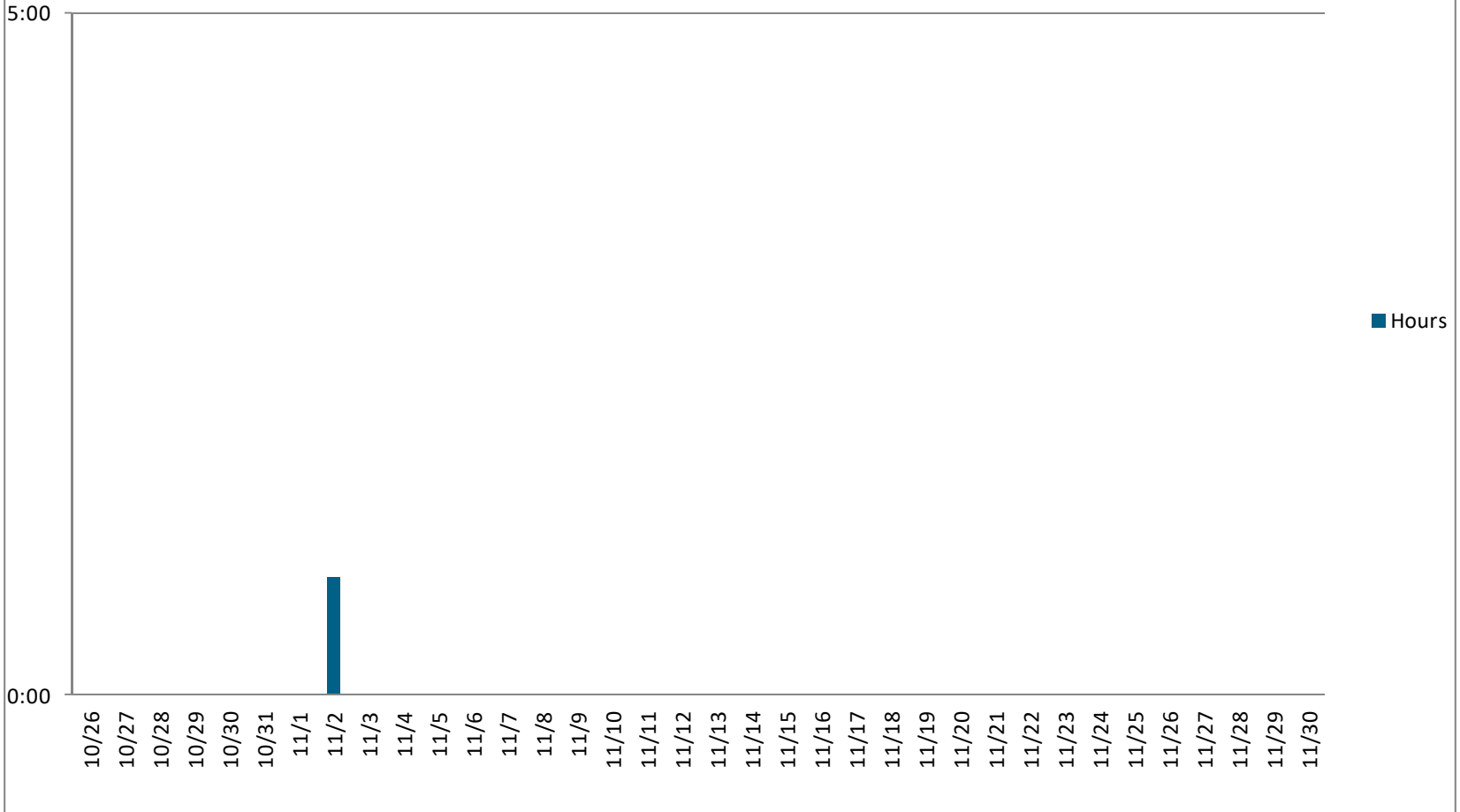
Table 18.2: FMS Trending Measurements – Temperature

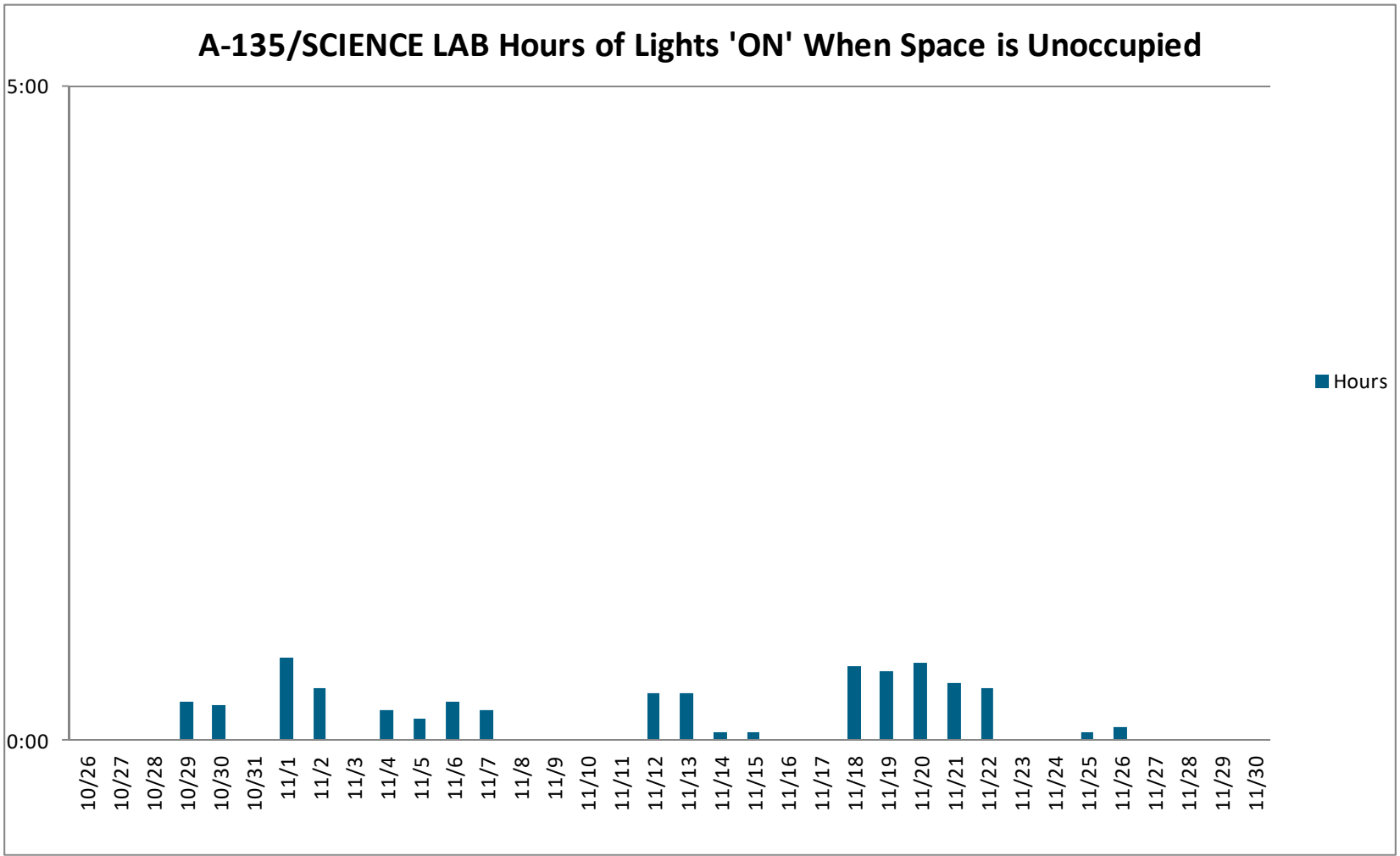
FMS Measurements (Occupied Hours Summary)									
Data Logger Summary			Interior Space Temperature °F						
Count	Serial Number	Room Location	Average	Standard Deviation	Maximum	Minimum	% Time over 74	% Time Below 68	Total >74 and <68
1		A117- Classroom	70.59	1.25	77.82	67.87	2.71%	0.34%	3.05%
2		A135-Science Classroom	70.01	1.15	74.33	65.74	0.07%	7.38%	7.45%
3		A212-Science Classroom	72.27	1.49	77.48	70.10	11.45%	0.00%	11.45%
4		A217	73.11	1.96	79.59	69.52	29.55%	0.00%	29.55%
5		A244-Office	69.71	1.29	72.80	65.01	0.00%	11.24%	11.24%
6		B116-Classroom	71.66	1.86	78.64	69.34	13.99%	0.00%	13.99%
7		B132-Classroom	70.87	1.34	77.38	68.43	3.86%	0.00%	3.86%
8		B218-Classroom	73.10	1.77	80.22	69.58	23.79%	0.00%	23.79%
9		B235-Classroom	74.14	2.03	80.35	69.56	53.20%	0.00%	53.20%
10		B236-Classroom	72.88	1.49	78.22	69.49	17.91%	0.00%	17.91%
11		C118-Classroom	70.58	1.19	76.56	67.55	2.81%	0.33%	3.14%
12		C159-Office	72.17	2.21	78.11	68.77	18.89%	0.00%	18.89%
13		C215-Classroom	73.29	2.37	80.04	68.60	32.29%	0.00%	32.29%
14		C231-Classroom	73.01	1.85	80.53	69.48	21.31%	0.00%	21.31%
15		D119-Science Classroom	73.80	1.78	79.64	70.26	36.54%	0.00%	36.54%
16		D126-Classroom	71.39	1.34	76.18	68.11	3.27%	0.00%	3.27%
17		D146-Office	70.29	1.50	75.23	66.93	1.96%	7.58%	9.54%
18		D160-Classroom	73.06	2.01	79.63	68.62	22.35%	0.00%	22.35%
19		D204-Asst Principal Office	74.53	1.95	80.54	70.55	44.97%	0.00%	44.97%
20		D235-Dept Head Office	70.49	1.85	74.93	62.80	0.78%	7.65%	8.43%
21		D237-Classroom	70.63	0.89	73.05	68.36	0.00%	0.00%	0.00%

22	D250-Classroom	72.10	1.20	76.43	70.00	7.39%	0.00%	7.39%
23	D251-Sm Grp Classroom	71.40	1.27	76.49	69.48	4.18%	0.00%	4.18%
24	D262-Office	68.45	2.08	76.62	63.30	1.24%	47.25%	48.50%
25	D279-Classroom	74.71	2.17	81.87	69.65	56.80%	0.00%	56.80%
26	D306-Office	72.67	1.86	78.58	70.06	15.69%	0.00%	15.69%
27	D319-Science Classroom	74.31	2.28	82.06	71.25	33.33%	0.00%	33.33%
28	D323-Classroom Springer	73.21	1.77	79.36	69.90	26.86%	0.00%	26.86%
29	D342-Office	73.12	1.22	76.64	70.31	11.96%	0.00%	11.96%
30	D356-Classroom	73.08	2.14	79.56	69.21	18.17%	0.00%	18.17%
31	D358-Classroom	74.04	2.14	79.87	69.75	43.20%	0.00%	43.20%
32	D359-Classroom	73.69	1.79	78.89	70.27	28.24%	0.00%	28.24%
33	E111-Choir Office	71.00	1.08	73.65	67.44	0.00%	1.31%	1.31%
34	E119-Band Room Classroom	71.09	1.59	77.12	67.84	6.43%	0.13%	6.56%
35	F120-Media Center	73.35	1.75	78.28	67.46	29.71%	0.49%	30.20%
36	F213-Faculty Office	73.25	2.41	80.52	69.38	34.41%	0.00%	34.41%
37	F226-Principal's Office	71.26	1.73	77.12	68.48	8.86%	0.00%	8.86%
38	F248-Nurse's Office	No Data Provided						
39	G102-Office Shelby Black	69.84	1.30	72.24	66.46	0.00%	13.85%	13.85%
40	G110-Art Studio	73.35	1.75	78.28	67.46	29.71%	0.49%	30.20%
41	H117-Cafeteria Office	80.37	4.89	91.05	71.68	90.80%	0.00%	90.80%
42	H121-Dining Room	No Data Provided						
43	H134-Drama Classroom	No Data Provided						
44	J034-Phys Ed Treatment	75.04	1.41	80.69	72.43	74.12%	0.00%	74.12%

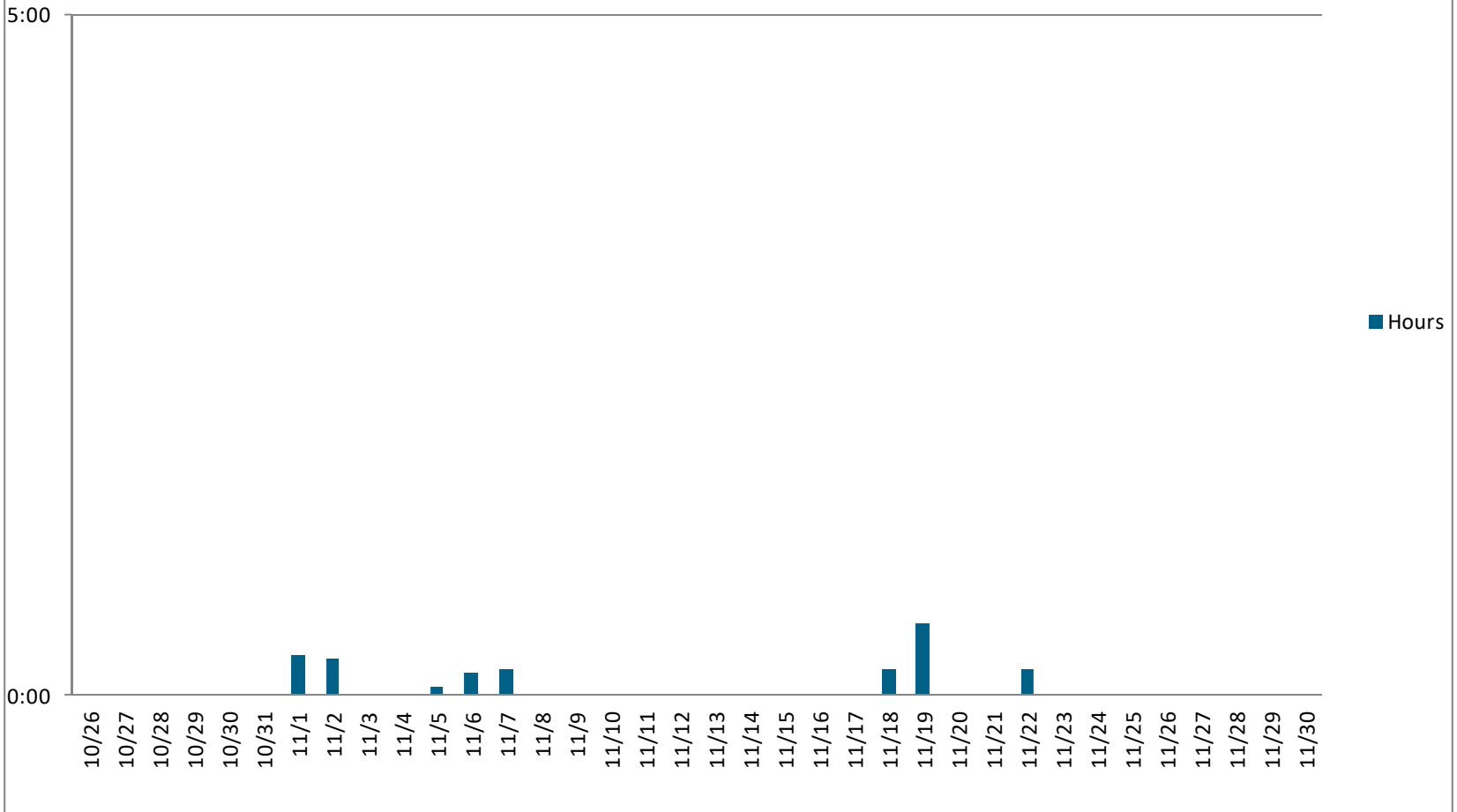


A-117/CORE CLASS Hours of Lights 'ON' When Space is Unoccupied

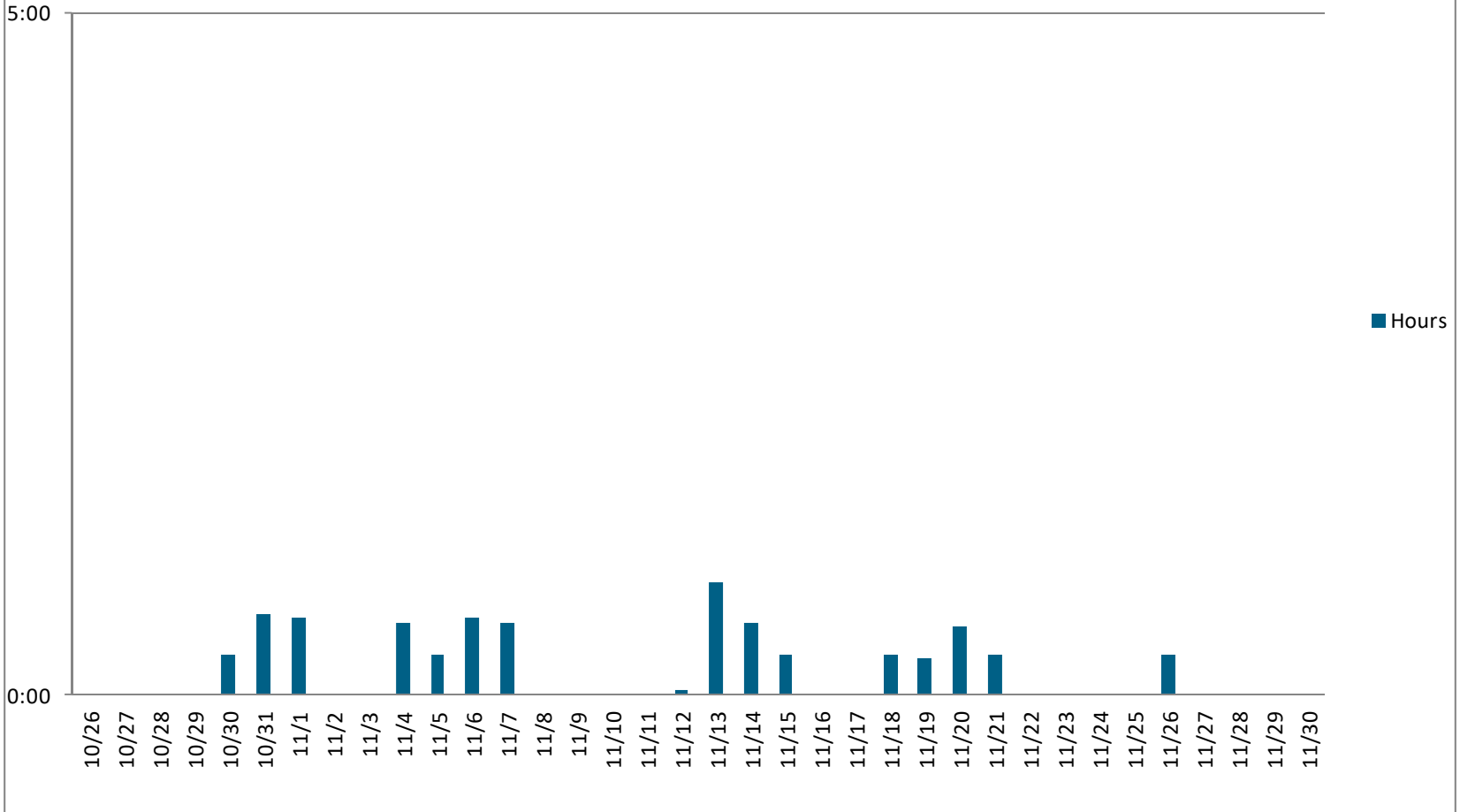


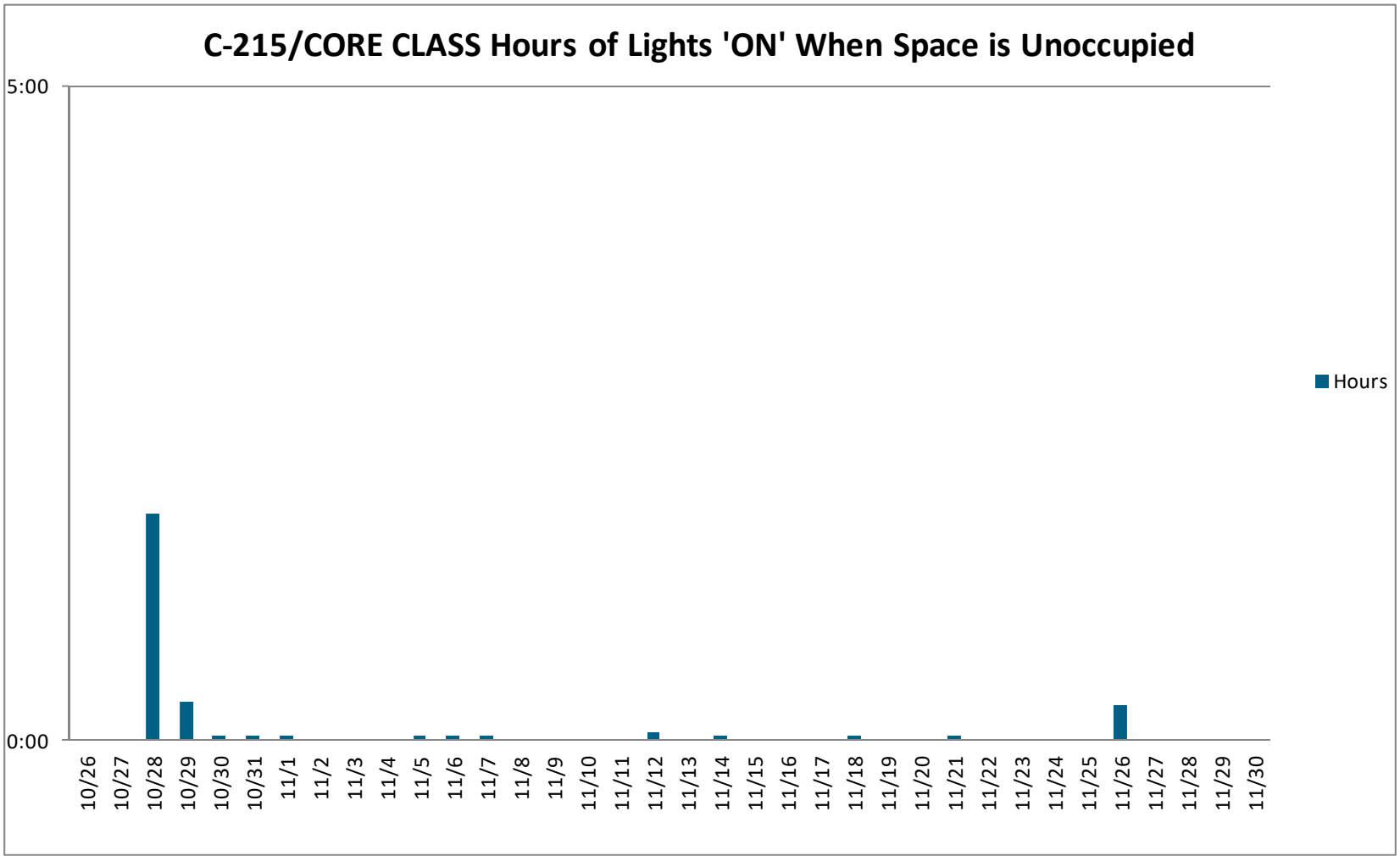


B-132/ELECTIVE CLASS Hours of Lights 'ON' When Space is Unoccupied

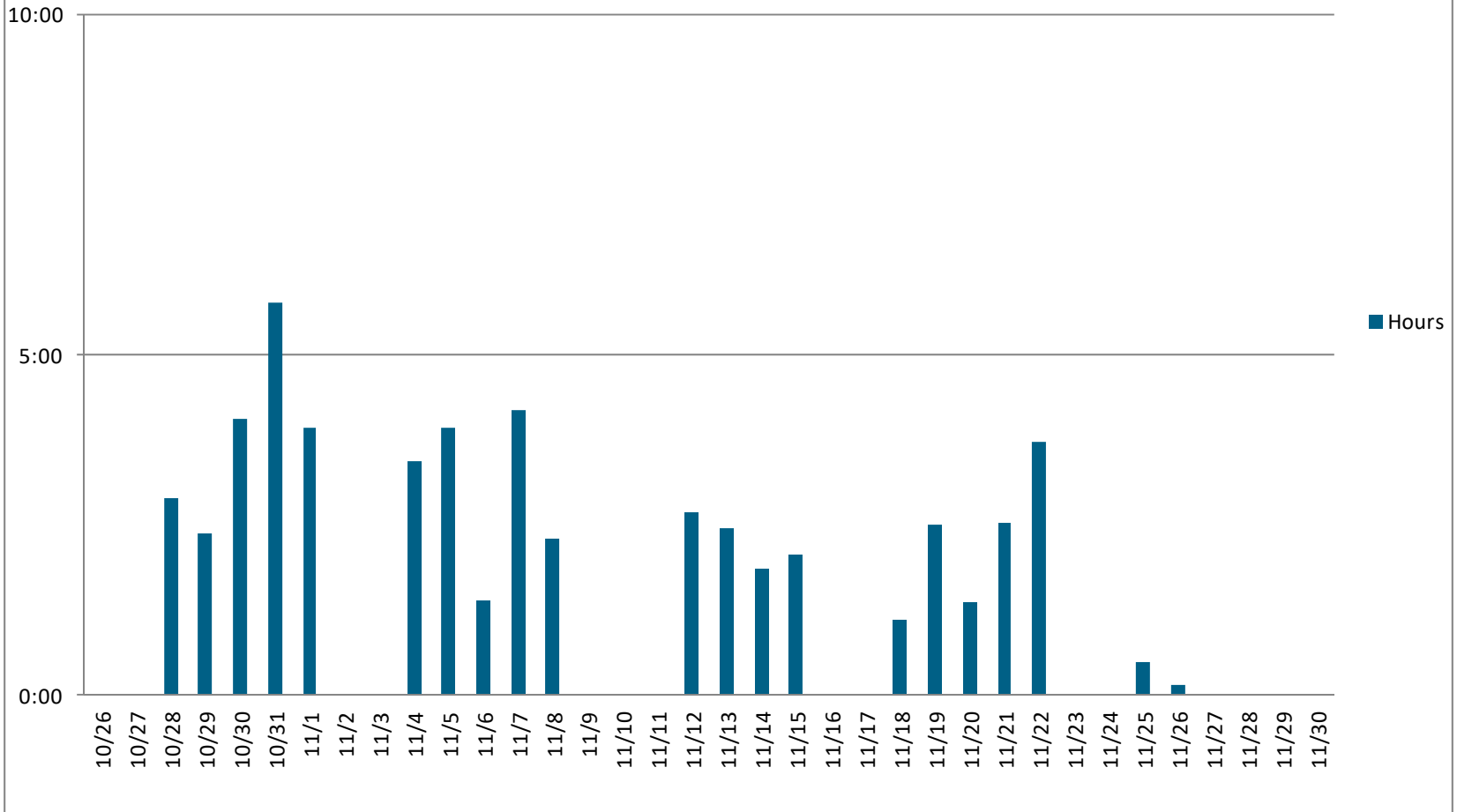


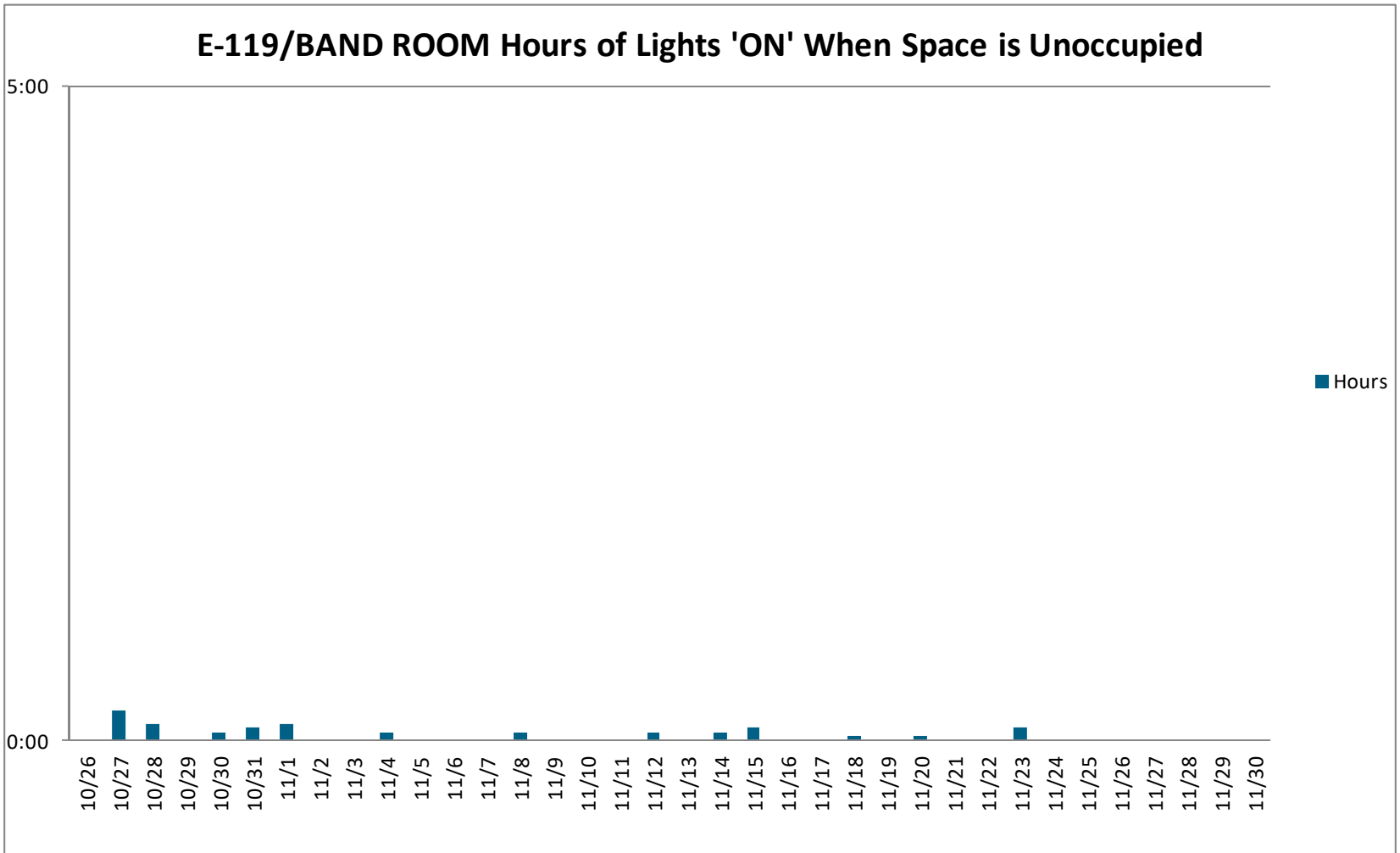
B-235/CORE CLASS Hours of Lights 'ON' When Space is Unoccupied



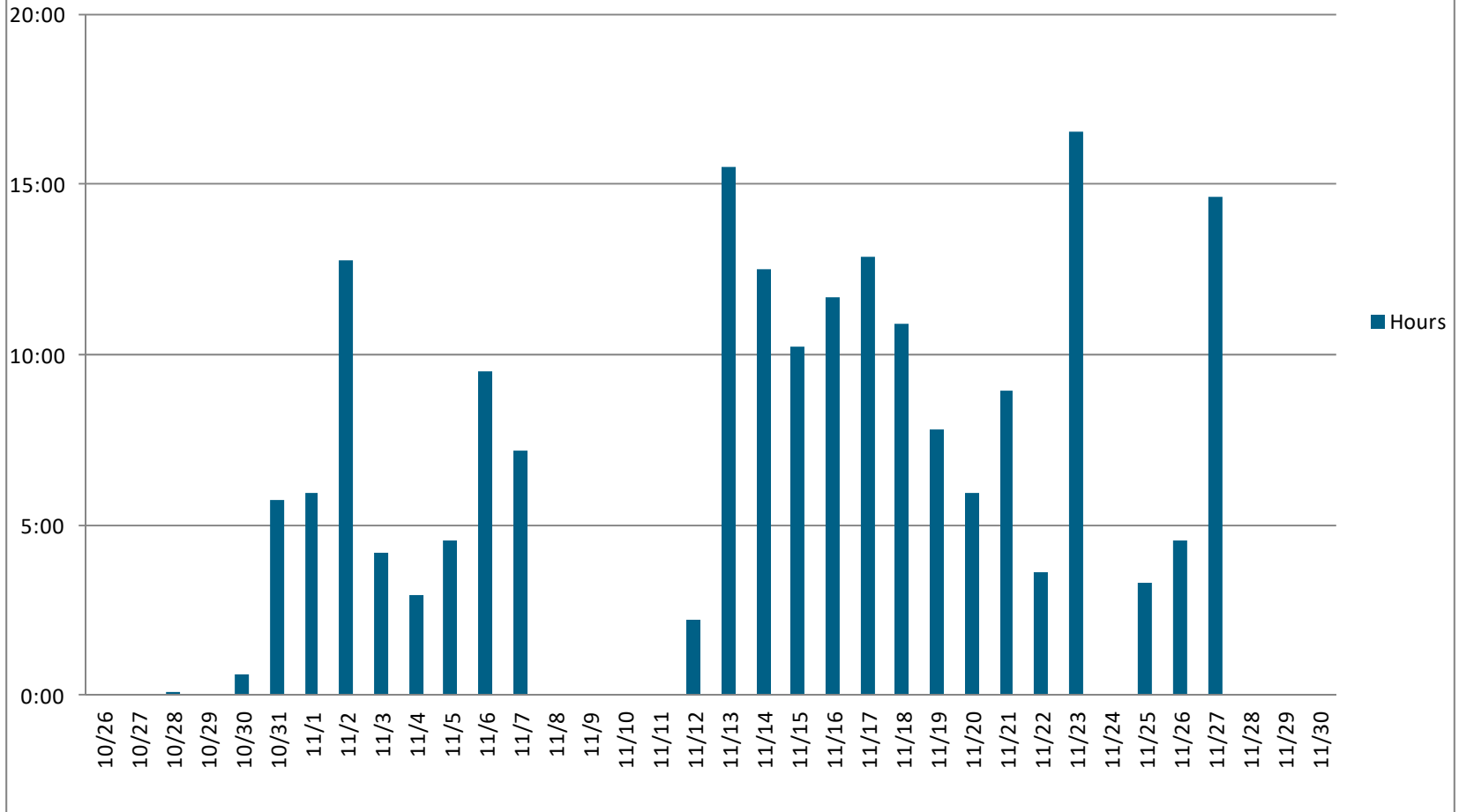


D-358/CORE CLASS Hours of Lights 'ON' When Space is Unoccupied

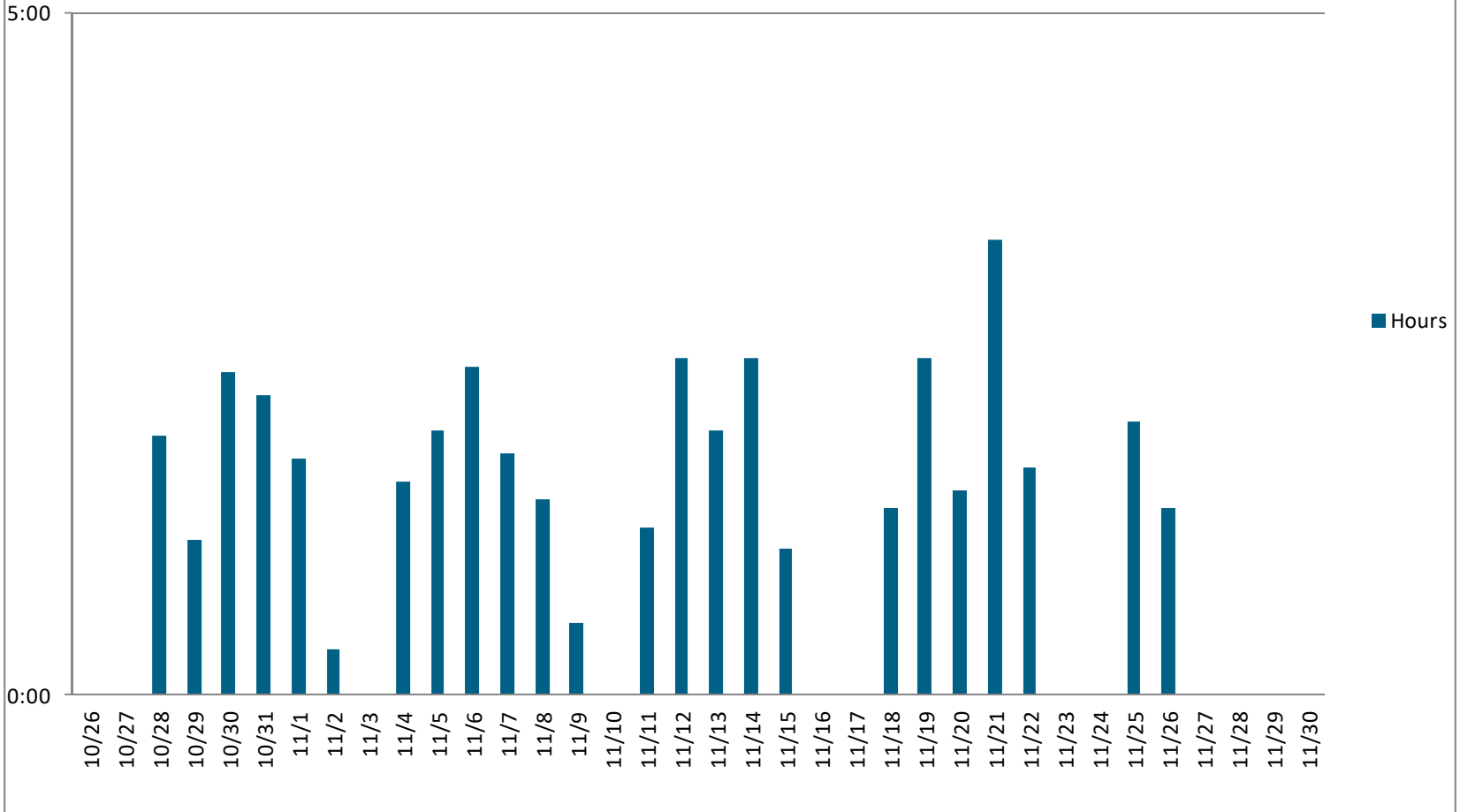




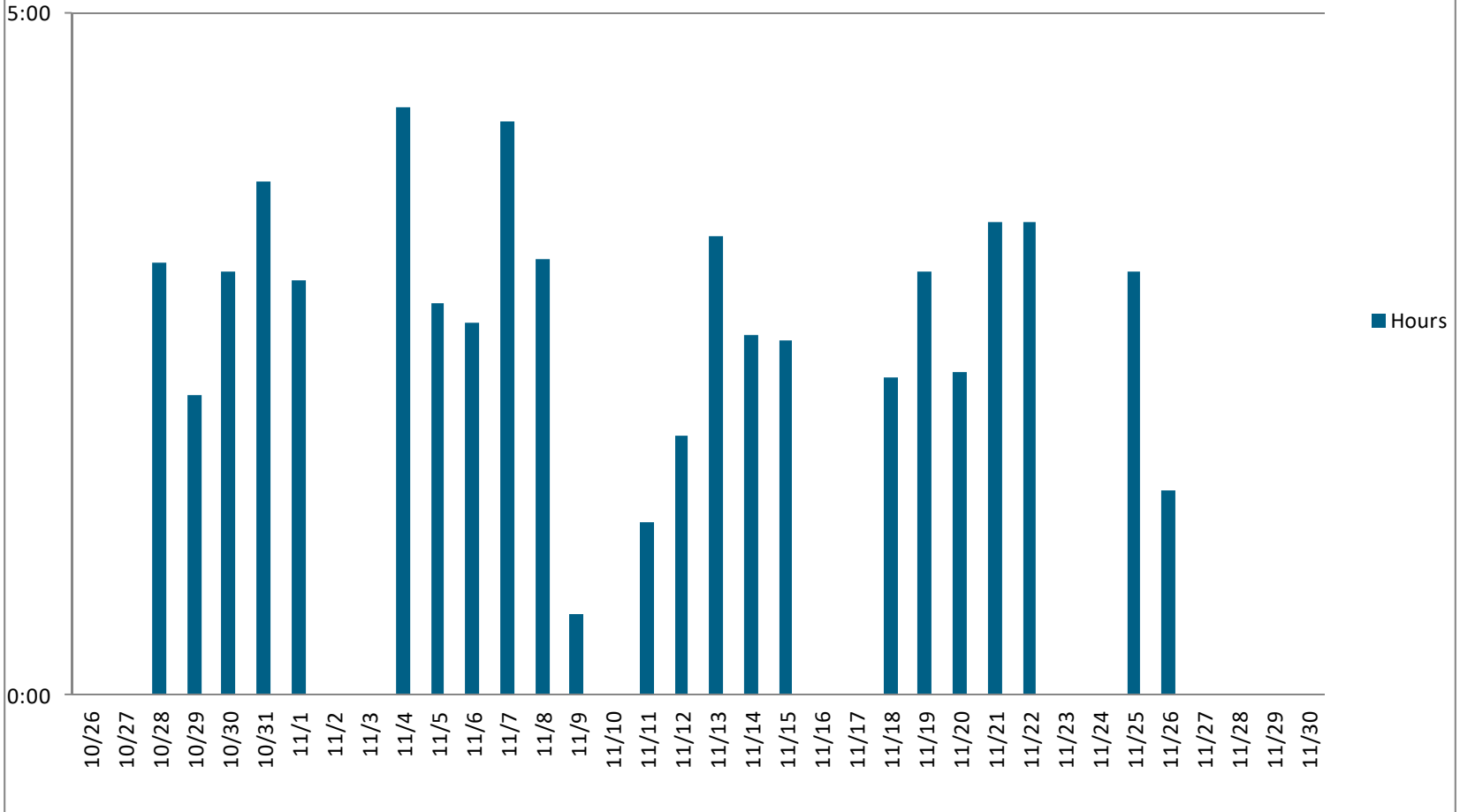
G-110/ 2-D ART CLASS Hours of Lights 'ON' When Space is Unoccupied

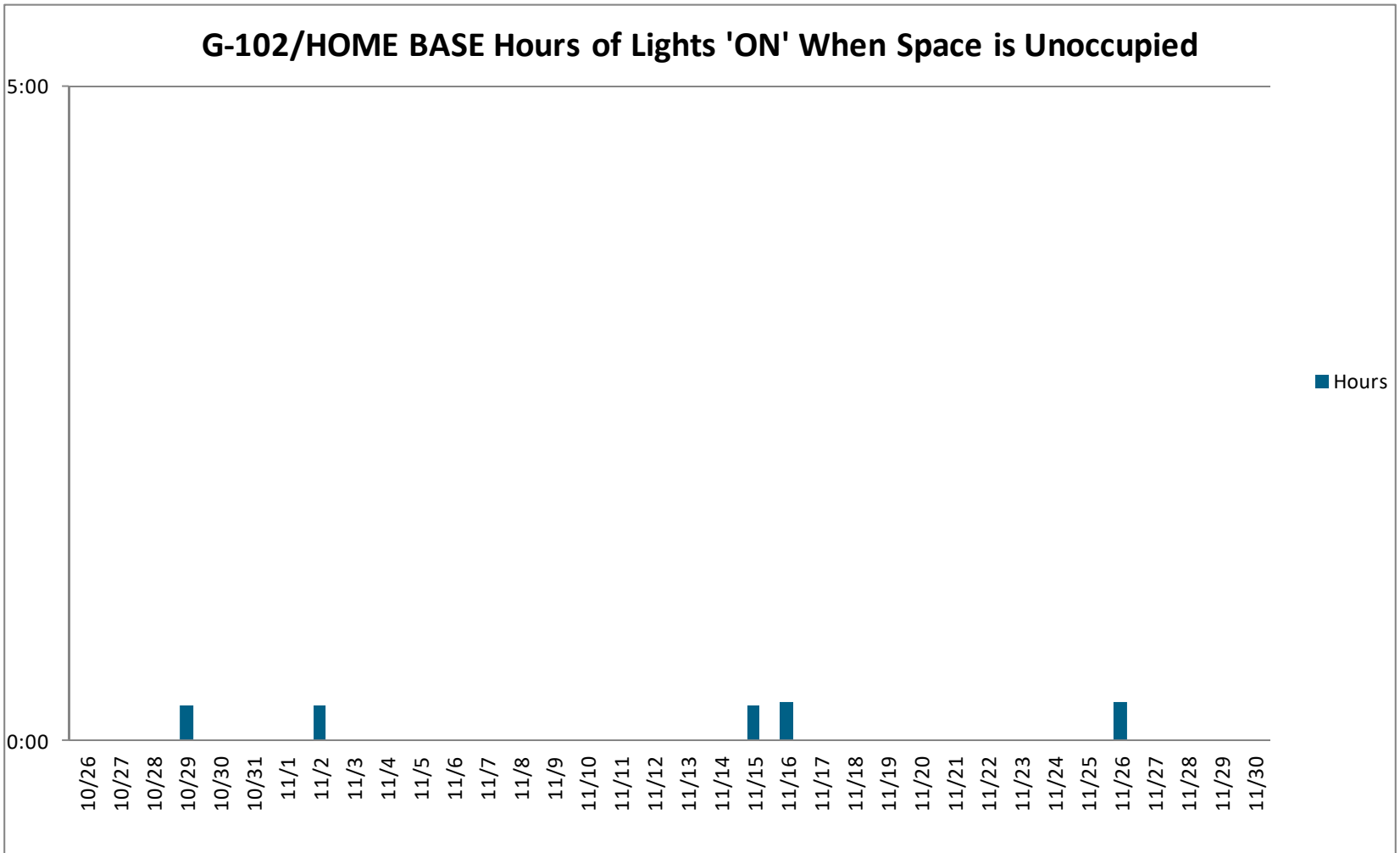


D-204/DEAN Hours of Lights 'ON' When Space is Unoccupied



F-226/PRINCIPAL Hours of Lights 'ON' When Space is Unoccupied





GENUINE | PROGRESSIVE | ADVOCATES

