



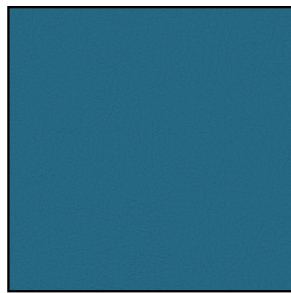
Carrizozo Municipal School District

FURNITURE SPECIFICATIONS | MAY 27TH, 2025

ACCESSORY

A01a

STACKABLE SEATING



Upholstery:
Paradise



Caddy Frame:
Starlight Silver
Metallic

MANUFACTURER:

KI

ITEM:

Imaginasium Blip

DESCRIPTION:

Stackable foam floor pads w/ caddy on casters. Pad with handle. 10 pads per caddy.

DIMENSIONS:

16" D x 3" H (seat); 18 1/8" D x 34 5/8" H (caddy)

FINISHES:

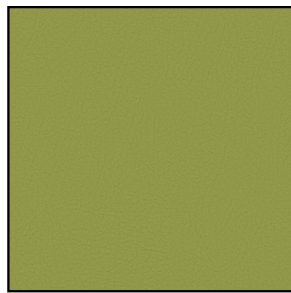
Upholstery: Umbel - Paradise
Caddy: Starlight Silver Metallic

NOTES:

ACCESSORY

A01b

STACKABLE SEATING



Upholstery:
Sassafras



Caddy Frame:
Starlight Silver
Metallic

MANUFACTURER:

KI

ITEM:

Imaginasium Blip

DESCRIPTION:

Stackable foam floor pads w/ caddy on casters. Pad with handle. 10 pads per caddy.

DIMENSIONS:

16" D x 3" H (seat); 18 1/8" D x 34 5/8" H (caddy)

FINISHES:

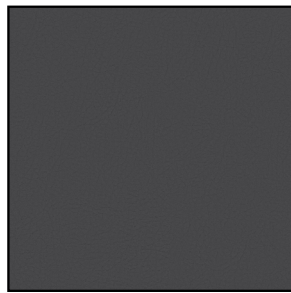
Upholstery: Umbel - Sassafras
Caddy: Starlight Silver Metallic

NOTES:

ACCESSORY

A01c

STACKABLE SEATING



Upholstery:
Charcoal



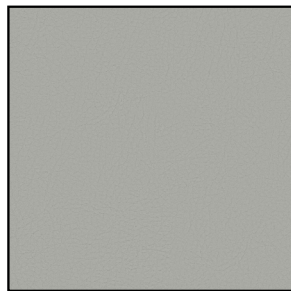
Caddy Frame:
Starlight Silver
Metallic

MANUFACTURER:	KI
ITEM:	Imaginasium Blip
DESCRIPTION:	Stackable foam floor pads w/ caddy on casters. Pad with handle. 10 pads per caddy.
DIMENSIONS:	16" D x 3" H (seat); 18 1/8" D x 34 5/8" H (caddy)
FINISHES:	Upholstery: Umbel - Charcoal Caddy: Starlight Silver Metallic
NOTES:	

ACCESSORY

A01d

STACKABLE SEATING



Upholstery:
Fog



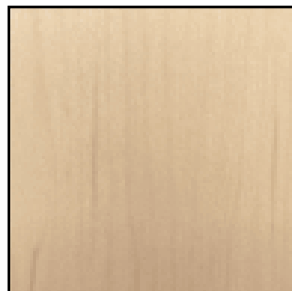
Caddy Frame:
Starlight Silver
Metallic

MANUFACTURER:	KI
ITEM:	Imaginasium Blip
DESCRIPTION:	Stackable foam floor pads w/ caddy on casters. Pad with handle. 10 pads per caddy.
DIMENSIONS:	16" D x 3" H (seat); 18 1/8" D x 34 5/8" H (caddy)
FINISHES:	Upholstery: Umbel - Fog Caddy: Starlight Silver Metallic
NOTES:	

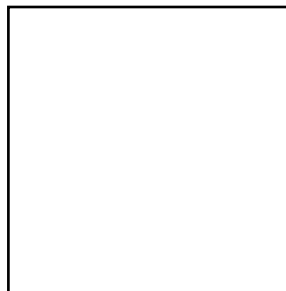
ACCESSORY

A02

INSTRUCTOR PODIUM



Wood Stain:
Haystack



Frame/ Panel:
White

MANUFACTURER:

Egan

ITEM:

Ava Lectern

DESCRIPTION:

Lecture podium with power adjustable height, built-in wheels, pull-out shelf, and lockable storage cabinet. Optional locking for removable front access panel and user side-hinged door.

DIMENSIONS:

26 3/4"D x 27 1/2"W x 31 1/2" - 42 1/8"H

FINISHES:

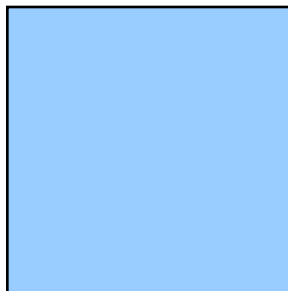
Wood Stain: Haystack
Frame/ Panel: White

NOTES:

ACCESSORY

A03a

FLOOR SEATING



Vinyl: Blue

MANUFACTURER:	Lakeshore Learning
ITEM:	Calming Colors Premium Teardrop Beanbag Seat
DESCRIPTION:	Extra high back with vinyl cover and stitch-closed zipper.
DIMENSIONS:	30"W x 32"H
FINISHES:	Blue
NOTES:	

ACCESSORY

A03b

FLOOR SEATING



Vinyl: Sage

MANUFACTURER:	Lakeshore Learning
ITEM:	Calming Colors Premium Teardrop Beanbag Seat
DESCRIPTION:	Extra high back with vinyl cover and stitch-closed zipper.
DIMENSIONS:	30"W x 32"H
FINISHES:	Sage
NOTES:	

ACCESSORY

A04

DRAMATIC PLAY



MANUFACTURER: Lakeshore Learning

ITEM: All-In-One Kitchen

DESCRIPTION: A microwave, stove, oven, sink, refrigerator and storage space. Constructed with wipe-cleanable surface.

DIMENSIONS: 16 1/8" D x 52" W x 44 1/2" H

FINISHES: Wood look laminate with PVC edgebands.

NOTES:

ACCESSORY

A05

DRAMATIC PLAY



MANUFACTURER:	Lakeshore Learning
ITEM:	Help-Yourself Dress-Up Center
DESCRIPTION:	Child-sized open-shelving with 3 storage bins and hooks.
DIMENSIONS:	16 1/8" D x 28" W x 44 5/8" H
FINISHES:	Wood look laminate with PVC edgebands.
NOTES:	

ACCESSORY

A06

NURSE COT



Upholstery: Dove



*Base:
Walnut*

MANUFACTURER:	School Health
ITEM:	S Biltmore Custom Recovery Couch
DESCRIPTION:	Nurses couch with vinyl upholstery, adjustable headrest, and lockable, wire pull drawers.
DIMENSIONS:	72"L x 27"W x 25"H
FINISHES:	Upholstery: Dove Base: Walnut
NOTES:	

ACCESSORY

A07

OCCUPATIONAL MAT TABLE



MANUFACTURER:	Southpaw
ITEM:	Mat Table (#854000)
DESCRIPTION:	Wood cot table base with a 2" thick foam pad and vinyl covering.
DIMENSIONS:	60"L x 30"W x 18"H
FINISHES:	Blue vinyl pad Clear coating on wood
NOTES:	

ACCESSORY

A08a

CREDENZA



Laminate:
Formica Folkstone



Paint:
Brushed Nickel

MANUFACTURER:	Nevins
ITEM:	Union Storage Credenza - CS7220L/ LP01 (PVC06)(Formica 927 Folkstone)/ MW / H3 / LEG6 / SCLKS / ASHF
DESCRIPTION:	Lockable, laminate credenza with white melamine interior with two adjustable shelves, brushed nickel hardware and legs, and Synk2 legs.
DIMENSIONS:	20"D x 72"W x 30"H
FINISHES:	Laminate: Formica Folkstone - 927-58 PVC edge: Folkstone Metal Finishes: Brushed Nickel
NOTES:	

ACCESSORY

A08b

CREDENZA



Laminate:
Formica Folkstone



Paint:
Brushed Nickel

MANUFACTURER:	Nevins
ITEM:	Union Storage Credenza - CS3620L/ LP01 (PVC06)(Formica 927 Folkstone)/ MW / H3 / LEG6 / SCLKS / ASHF
DESCRIPTION:	Lockable, laminate credenza with white melamine interior with two adjustable shelves, brushed nickel hardware and legs, and Synk2 legs.
DIMENSIONS:	20"D x 36"W x 30"H
FINISHES:	Laminate: Formica Folkstone - 927-58 PVC edge: Folkstone Metal Finishes: Brushed Nickel
NOTES:	

ACCESSORY

A09

MOBILE EASEL



MANUFACTURER:	Lakeshore Learning
ITEM:	Flex-Space Double-Sided Mobile Teaching Easel
DESCRIPTION:	Easel on locking casters with two (2) magnetic write & wipe surfaces: one (1) blank and one (1) with 1-1/2" lines for writing. Includes tray and hanging rings.
DIMENSIONS:	35 1/2"D x 30"W x 62"H
FINISHES:	heavy-gauge, powder-coated steel (1" diameter tubing)
NOTES:	

ACCESSORY

A10a

INTERACTIVE DISPLAYS



MANUFACTURER:	Infocus, <i>No Substitutions</i>
ITEM:	JTouch Series 13 - IN7513
DESCRIPTION:	Google EDLA-certified interactive display
DIMENSIONS:	67.6"L x 3.62"D x 41.53"H
FINISHES:	N/A
NOTES:	

ACCESSORY

A10b

INTERACTIVE DISPLAYS

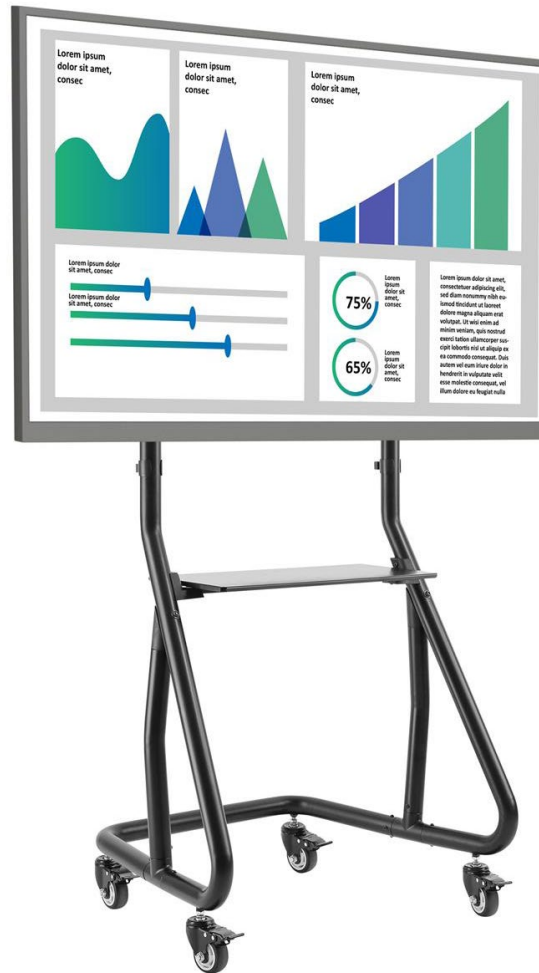


MANUFACTURER:	Infocus, <i>No Substitutions</i>
ITEM:	OPS Slit-In PC Module - Processor: Intel® Core™ i5-12450H
DESCRIPTION:	Compatible with JTouch Series 13. RAM: 8GB DDR4 2666Mhz Storage: 256GB M.2 NVMe SSD
DIMENSIONS:	N/A
FINISHES:	N/A
NOTES:	

ACCESSORY

A11

FLAT SCREEN CART



MANUFACTURER:	Displays 2 Go, D2G Group
ITEM:	Floor Standing, Rolling TV Station
DESCRIPTION:	Mobile cart for flat panel monitors with height adjustability, locking swivel casters and technology shelf. Holds 60"-105" flat screens weighing up to 220 lbs.
DIMENSIONS:	43.1" x 66.3" x 26.9" Height Adjustable: 56" - 60"H
FINISHES:	Black
NOTES:	

ACCESSORY

A12a

FLOOR SEATING



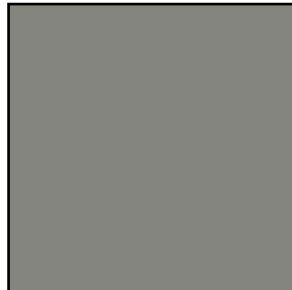
Vinyl:
Primary Red

MANUFACTURER:	Sixinch
ITEM:	Animals Pouf Collection - Bear
DESCRIPTION:	Soft foam, animal shaped seat with polyurethane, 100% waterproof vinyl and wood with glides base.
DIMENSIONS:	29-1/2"D x 12-1/2"W x 16"H
FINISHES:	Vinyl: Primary Red
NOTES:	

ACCESSORY

A12b

FLOOR SEATING



Vinyl:
Metallic Silver

MANUFACTURER:	Sixinch
ITEM:	Animals Pouf Collection - Bear
DESCRIPTION:	Soft foam, animal shaped seat with polyurethane, 100% waterproof vinyl and wood with glides base.
DIMENSIONS:	29-1/2"D x 12-1/2"W x 16"H
FINISHES:	Vinyl: Metallic Silver
NOTES:	

ACCESSORY

A13

HIGH DENSITY CHAIR DOLLY



MANUFACTURER:	KI
ITEM:	Dolly for High-Density Chairs, All Poly (LLDHD)
DESCRIPTION:	Allows for stacking and transport of high density chairs. Black powder-coated steel with two fixed, and two swivel casters (nonlocking). Stacks 25-high.
DIMENSIONS:	30"D x 23"W x 15-1/4"H
FINISHES:	Black
NOTES:	Not shown in furniture plans; quantity determined per chair order.

ACCESSORY

A14

MOBILE BOOK DROP



MANUFACTURER:	Kingsley
ITEM:	EasyRoller Drop & Roll Cart
DESCRIPTION:	Indoor high capacity cart with keyed lockable lid, lockable casters, and wide push/pull handle for mobility. 11.9 cubic feet. 400 lbs. or 181 kg weight capacity. Load limit 380 books or 950 media jewel cases.
DIMENSIONS:	25-7/8"W x 27-1/8"D x 38-3/8"H
FINISHES:	Standard; as shown
NOTES:	

ACCESSORY

A15

OCCUPATIONAL MAT TABLE

**MANUFACTURER:**

Southpaw

ITEM:

150.00 lbs Child Cocoon Swing (#0132), Safety Rotational Device (#2000), Safety Snap (# 0100)

DESCRIPTION:

Made of soft, no-pinch nylon mesh fabric, and hangs from six webbing straps. Swing becomes a single-point sling hammock with front and rear straps detached, which provides full body support with an extension position.

DIMENSIONS:

50"H

FINISHES:

Standard

NOTES:

ACCESSORY

A16

OCCUPATIONAL FLOOR MATS



MANUFACTURER:	Fun and Function
ITEM:	EnviroSafe™ Royal Blue Folding Mats 4' x 6' - 2 Sided Velcro
DESCRIPTION:	Accordion-style, foldable mats made from 60% recycled and 40% virgin polyester fiber. Coated in layer of fire retardant PVC and polyester. Hypo allergenic mats are latex free, and mold and mildew proof.
DIMENSIONS:	48"W x 72"L x 2"D
FINISHES:	Royal Blue
NOTES:	

CHAIR

C01a

STUDENT CHAIR



Frame: Powder
Coated Steel



Shell:
Pantone 423

MANUFACTURER:	Lakeshore Learning, No Substitutions
ITEM:	Flex-Space Ergo Bounce Cantilever Chair
DESCRIPTION:	heavy-gauge, powder-coated steel tube frame with double-walled, blow-molded virgin polypropylene shell. 3 Stacking.
DIMENSIONS:	15 3/4"W x 17 1/2"L x 26 3/4" Back Height Seat: 14 1/4"W x 13 1/2" H
FINISHES:	Frame: Powder Coated Steel (Standard) Seat: Pantone 423
NOTES:	Kindergarten-1st Grade

CHAIR

C01b

STUDENT CHAIR



Frame: Powder
Coated Steel



Shell:
Pantone 423

MANUFACTURER:	Lakeshore Learning, No Substitutions
ITEM:	Flex-Space Ergo Bounce Cantilever Chair
DESCRIPTION:	heavy-gauge, powder-coated steel tube frame with double-walled, blow-molded virgin polypropylene shell. 4 Stacking.
DIMENSIONS:	15 3/4"W x 17 1/2"L x 28 3/4" Back Height Seat: 14 1/4"W x 15 1/2" H
FINISHES:	Frame: Powder Coated Steel (Standard) Seat: Pantone 423
NOTES:	2nd-3rd Grade

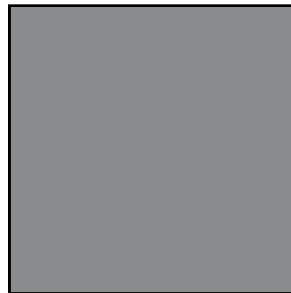
CHAIR

C01c

STUDENT CHAIR



Frame: Powder
Coated Steel



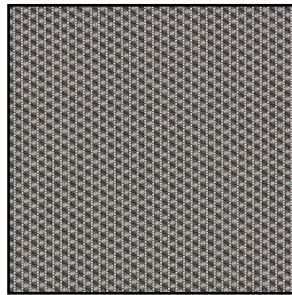
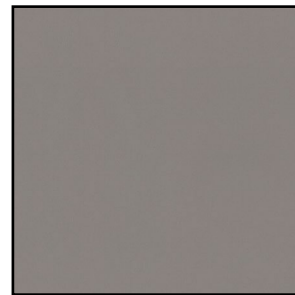
Shell:
Pantone 423

MANUFACTURER:	Lakeshore Learning, No Substitutions
ITEM:	Flex-Space Ergo Bounce Cantilever Chair
DESCRIPTION:	heavy-gauge, powder-coated steel tube frame with double-walled, blow-molded virgin polypropylene shell. 4 Stacking.
DIMENSIONS:	20"W x 18"L x 32" Back Height Seat: 16 1/4"W x 17 1/2" H
FINISHES:	Frame: Powder Coated Steel (Standard) Seat: Pantone 423
NOTES:	4th-12th Grade

CHAIR

C02

TASK CHAIR - ADMINISTRATION AND TEACHER

*Frame: Black**Back: Mesh Nickel**Seat: Slide, Fog*

MANUFACTURER:	Sit On It, <i>No Substitutions</i>
ITEM:	Hexy, High Back Black Frame
DESCRIPTION:	Task chair with 5-star base, upholstered seat, mesh back. Height-adjustable seat, height/width adjustable arms, standard synchro with seat depth mechanism, standard cylinder, and casters.
DIMENSIONS:	26 1/4"W x 27 1/2"D x 39 1/2" Back H Seat: 20"W x 17-19"D x 16-20"H
FINISHES:	Frame: Black Back: Mesh Nickel Upholstered Seat: SitOnIt, Slide, Fog - Grade 2 Vinyl

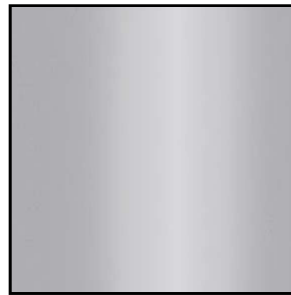
CHAIR

C03a

SIDE CHAIR



Poly Frame:
Poppy Red



Frame: Starlight
Silver Metallic

MANUFACTURER:

KI

ITEM:

LimeLite High Density Stack Chair

DESCRIPTION:

Sled base chair, solid-color poly shell with metal frame. Stack 25-high on dolly and 10-high on floor.

DIMENSIONS:

21 3/4"W x 20"D x 33 1/4"H
Seat: 18 1/4"W x 17 1/2"D x 17 1/2"H

FINISHES:

Poly: Poppy Red
Base/Frame: Starlight Silver Metallic

NOTES:

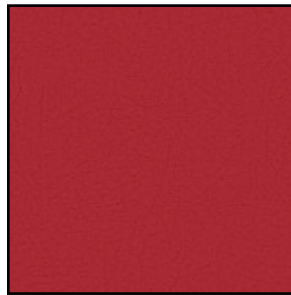
CHAIR

C03b

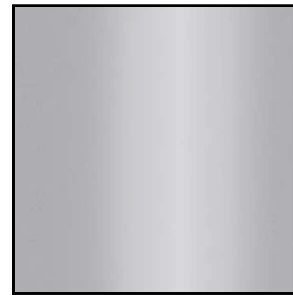
SIDE CHAIR



Poly Frame:
Poppy Red



Upholstery:
Molten Vumt Vinyl



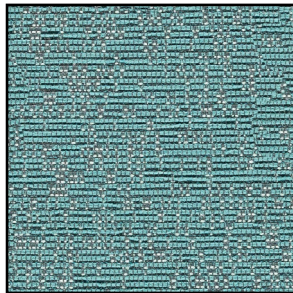
Frame: Starlight
Silver Metallic

MANUFACTURER:	KI
ITEM:	LimeLite Stack Chair
DESCRIPTION:	Sled base chair with an upholstered seat, solid-color poly shell with metal frame. Stack 15-high on dolly and 7-high on floor.
DIMENSIONS:	21 3/4"W x 20"D x 33 1/4"H Seat: 18 1/4"W x 17 1/2"D x 17 1/2"H
FINISHES:	Poly: Poppy Red Base/Frame: Starlight Silver Metallic Upholstery: KI Umbel Molten Vumt - Vinyl
NOTES:	

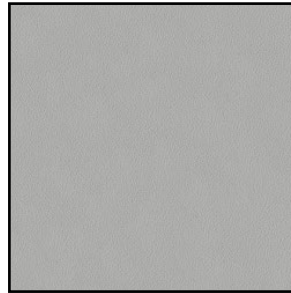
CHAIR

C04

SIDE CHAIR



Upholstered Seat:
Pixel, Aqua



Plastic Frame:
Sterling

MANUFACTURER:	Sit On It
ITEM:	Relay Nester Chair
DESCRIPTION:	4-leg, armless chair with carpet casters and nesting feature. Upholstered seat with plastic back.
DIMENSIONS:	18.25" W x 17.25" D x 32.25"-37.25" H; Seat height: 17"-22" H
FINISHES:	Upholstered Seat: SitOnIt - Grade 2, Fabric - Pixel, Aqua Frame and back: Sterling

NOTES:

CHAIR

C05a

STUDENT STOOL - SCIENCE

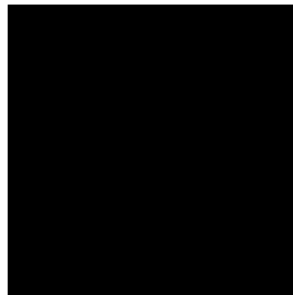


MANUFACTURER:	Diversified Casework
ITEM:	Perspective Stool with Pneumatic Base (SE-WB4M)
DESCRIPTION:	Height-adjustable stool with contouring, furniture grade hardwood seat and backrest with foot ring and black, non-marring glides.
DIMENSIONS:	18"-25.5"H
NOTES:	

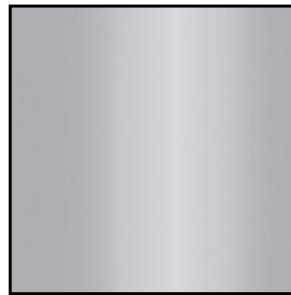
CHAIR

C05b

STUDENT STOOL - SCIENCE



*Poly Frame:
Black*



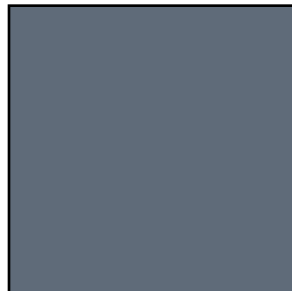
Frame: Platinum

MANUFACTURER:	Smith System
ITEM:	Potential Fixed Height, Backless Stool (32789F#PLT)
DESCRIPTION:	Stackable and durable seating with a plastic polypropylene shell, and a waterfall edge designed to allow occupant the backless stool to sit facing any 3 sides (front, left or right). Frame is constructed of strong 22mm x 14-gauge tubing with felt glides.
DIMENSIONS:	19.2"D x 20.5"W x 26.1"H
NOTES:	

CHAIR

C06

ADULT STOOL



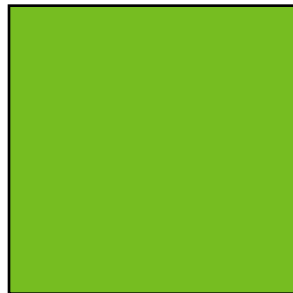
*Seat and Frame:
Blue Heron T13*

MANUFACTURER:	Media Technologies
ITEM:	Hannah Swivel-Title Task Stool (HAN009)
DESCRIPTION:	Armless, lightweight stool with height adjustability, foot rest, black casters and poly seat and back.
DIMENSIONS:	18"D x 18"W, Height adjustability: 23"-33"
FINISHES:	Frame: 809 Silver Thermophasitc (Polypropylene): Blue Heron T13
NOTES:	

CHAIR

C07

WOBBLE STOOL



*Seat and Frame:
Pantone 368*

MANUFACTURER:	Lakeshore Learning
ITEM:	Flex-Space Premium Wobble Chairs
DESCRIPTION:	Round stool on a rounded, no-slip rubber base.
DIMENSIONS:	13"D x 18"H
FINISHES:	Pantone 368
NOTES:	

TABLE

D01a

TEACHER DESK



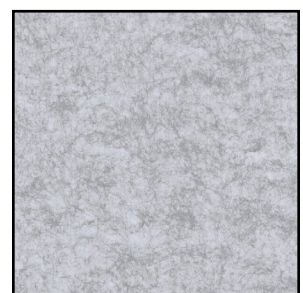
Inner Column Color:
Silver



Laminate:
Sterling Ash



Edge and Base Color:
Cool Gray



Modesty Panel:
FELT Heather

MANUFACTURER:

KI

ITEM:

WorkUp Crank Height-Adjustable Table (Sit-Stand)

DESCRIPTION:

Rectangular Top with crank based, height-adjustable T-Leg Base and modesty panel.

DIMENSIONS:

60" W x 24" D x 27"-44" H

FINISHES:

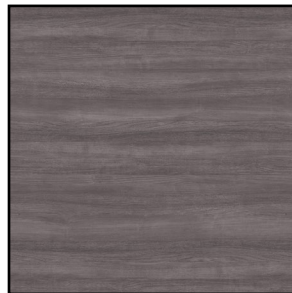
Inner Column: Silver
 Laminate: Sterling Ash LAZ
 Edge and Base: Cool Gray CG
 Modesty Panel: Heather FTHR

NOTES:

TABLE

D01b

TEACHER DESK



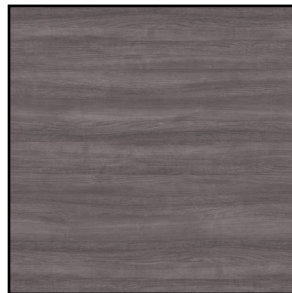
*Laminate and edge:
Sterling Ash*

MANUFACTURER:	KI
ITEM:	700 Series Desk with Partial Modesty Panel
DESCRIPTION:	Rectangular Top worksurface with full-height, painted metal sides, partial modesty panel, pencil drawer, and two (2) grommets (one on each side).
DIMENSIONS:	66" W x 30" D x 29" H
FINISHES:	Laminate: Sterling Ash LAZ Edge and Metal: Sterling Ash LAZ
NOTES:	

TABLE

D01c

TEACHER DESK



*Laminate and edge:
Sterling Ash*

MANUFACTURER:	KI
ITEM:	700 Series Desk with Partial Modesty Panel
DESCRIPTION:	Rectangular Top worksurface with full-height, painted metal sides, partial modesty panel, pencil drawer, and two (2) grommets (one on each side).
DIMENSIONS:	66" W x 24" D x 29" H
FINISHES:	Laminate: Sterling Ash LAZ Edge: Sterling Ash LAZ
NOTES:	

TABLE

D01d

TEACHER DESK



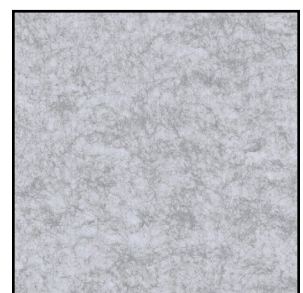
Inner Column Color:
Silver



Laminate:
Sterling Ash



Edge and Base Color:
Cool Gray



Modesty Panel:
FELT Heather

MANUFACTURER:

KI

ITEM:

WorkUp Crank Height-Adjustable Table (Sit-Stand)

DESCRIPTION:

Rectangular Top with crank based, height-adjustable T-Leg Base and modesty panel.

DIMENSIONS:

48" W x 24" D x 27"-44" H

FINISHES:

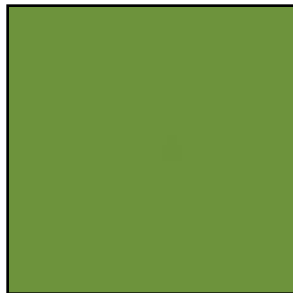
Inner Column: Silver
 Laminate: Sterling Ash LAZ
 Edge and Base: Cool Gray CG
 Modesty Panel: Heather FTHR

NOTES:

TABLE

D02a

STUDENT DESK



Edge and Legs:
Zesty Lime



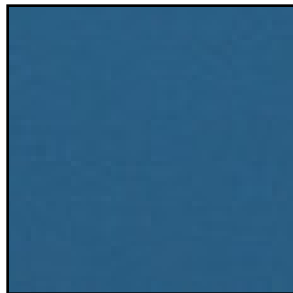
Laminate:
Beigewood

MANUFACTURER:	KI
ITEM:	Ruckus: Rectangle Post-Leg (20"x30")
DESCRIPTION:	Height-adjustable, 4-post rectangular student desk with metal glides.
DIMENSIONS:	30" W x 20" D x 20"-33" H
FINISHES:	Laminate: Beigewood Edge: Zesty Lime Base Finish: Zesty Lime
NOTES:	Kindergarten-5th Grade

TABLE

D02b

STUDENT DESK



Edge and Legs:
Sky Blue



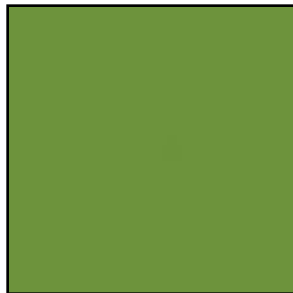
Laminate:
Beigewood

MANUFACTURER:	KI
ITEM:	Ruckus: Rectangle Post-Leg (20"x30")
DESCRIPTION:	Height-adjustable, 4-post rectangular student desk with metal glides.
DIMENSIONS:	30" W x 20" D x 20"-33" H
FINISHES:	Laminate: Beigewood Edge: Sky Blue Base Finish: Sky Blue
NOTES:	Kindergarten-5th Grade

TABLE

D02c

STUDENT DESK



Edge and Legs:
Zesty Lime



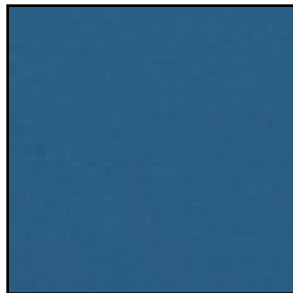
Laminate:
Beigewood

MANUFACTURER:	KI
ITEM:	Ruckus: Rectangle Post-Leg (20"x30")
DESCRIPTION:	Height-adjustable, 4-post rectangular student desk with metal glides.
DIMENSIONS:	30" W x 20" D x 29"-42" H
FINISHES:	Laminate: Beigewood Edge: Zesty Lime Base Finish: Zesty Lime
NOTES:	6th Grade-12th Grade

TABLE

D02d

STUDENT DESK



Edge and Legs:
Sky Blue



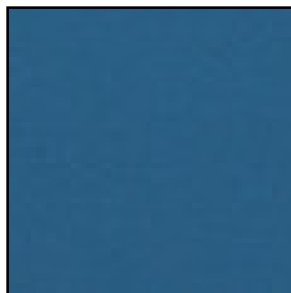
Laminate:
Beigewood

MANUFACTURER:	KI
ITEM:	Ruckus: Rectangle Post-Leg (20"x30")
DESCRIPTION:	Height-adjustable, 4-post rectangular student desk with metal glides.
DIMENSIONS:	30" W x 20" D x 29"-42" H
FINISHES:	Laminate: Beigewood Edge: Sky Blue Base Finish: Sky Blue
NOTES:	6th Grade-12th Grade

TABLE

D02e

STUDENT DESK - ADA



Edge and Legs:
Sky Blue



Laminate:
Beigewood

MANUFACTURER:

KI

ITEM:

Ruckus: Cantilever Desk - Single Post - ADA

DESCRIPTION:

Pneumatic height-adjustable, cantilever base rectangular student desk with plastic glides.

36" W x 25" D x 27 1/4" -31 1/4" H

DIMENSIONS:

Laminate: Beigewood
Base Finish and Edge: Sky Blue

FINISHES:

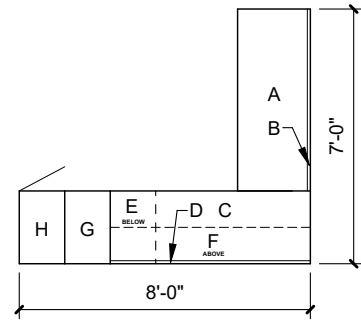
Special Education and Life Skills

NOTES:

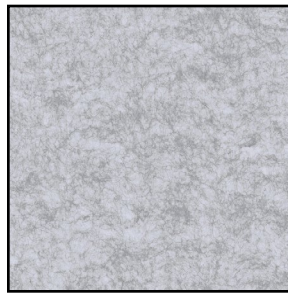
TABLE

D03a

ADMINISTRATION OFFICES

**PLAN:****LEGEND:****A:** 24"x60" Crank Height-Adjustable Table**B:** Modesty Panel**C:** 24"x66"x29" Rectangular Work Table**D:** Tackboard**E:** 15"x24"x22" Lockable 3-Drawer, Modular Pedestal**F:** 12"x66" Lockable, Overhead Cabinets**G:** 15"x24"x66" Lockable Wardrobe Cabinet**H:** 15"x24"x 60" Lockable, 5-Drawer Vertical Shelves

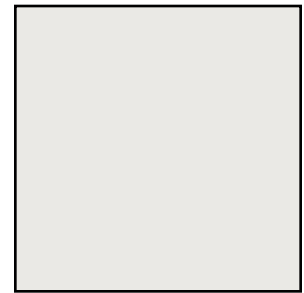
Laminate:
Asian Night



Modesty Panel:
FELT Heather



Tackboard Fabric:
Spectrum Slate



Leg Color:
White WHA

MANUFACTURER:

KI

ITEM:

Likha Casegoods

DESCRIPTION:

Modular L-shape desk system with height-adjustable desk and stand L-return, lower & upper closed storage.

DIMENSIONS:

See Legend

FINISHES:

Laminate: Asian Night

Modesty Panel: Heather FTTH

Tackboard Fabric: KI Spectrum Slate S1sl

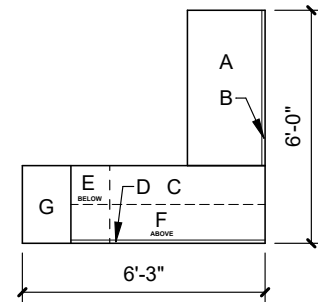
Leg Color: White WHA

NOTES:

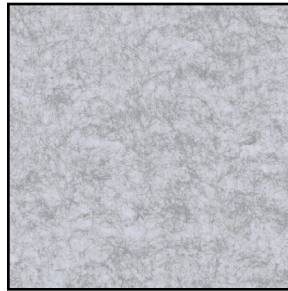
TABLE

D03b

ADMINISTRATION OFFICES

**PLAN:****LEGEND:****A:** 24"x48" Crank Height-Adjustable Table**B:** Modesty Panel**C:** 24"x60"x29" Rectangular Work Table**D:** Tackboard**E:** 15"x24"x21-3/4" Lockable 3-Drawer, Modular Pedestal**F:** 12"x60" Lockable, Overhead Cabinets**G:** 15"x24"x66" Lockable Wardrobe Cabinet

Laminate:
Asian Night



Modesty Panel:
FELT Heather



Tackboard Fabric:
Spectrum Slate



Leg Color:
White WHA

MANUFACTURER:

KI

ITEM:

Likha Casegoods

DESCRIPTION:

Modular L-shape desk system with height-adjustable desk and stand L-return, lower & upper closed storage.

DIMENSIONS:

See Legend

FINISHES:

Laminate: Asian Night

Modesty Panel: Heather FTTH

Tackboard Fabric: KI Spectrum Slate S1sl

Leg Color: White WHA

NOTES:

TABLE

D04a

SCIENCE TABLES



MANUFACTURER:	Diversified Casework
ITEM:	Perpetulab Fixed Height Leg Tables
DESCRIPTION:	Fixed height science table with black epoxy tabletop and non-skid adjustable glides and rubber leg boots
DIMENSIONS:	60"W x 30"D x 34"H
FINISHES:	Legs: Wood Tabletop: Black Epoxy

NOTES:

TABLE

D04b

SCIENCE TABLES



MANUFACTURER:	Diversified Casework
ITEM:	Perpetulab Fixed Height Leg Tables
DESCRIPTION:	Fixed height science table with black epoxy tabletop and non-skid adjustable glides and rubber leg boots
DIMENSIONS:	72"W x 30"D x 34"H
FINISHES:	Legs: Wood Tabletop: Black Epoxy

NOTES:

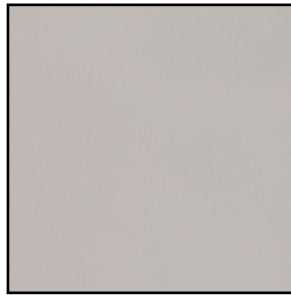
LOUNGE

L01

LOUNGE CHAIR



Back: Stone



Seat: Artesian



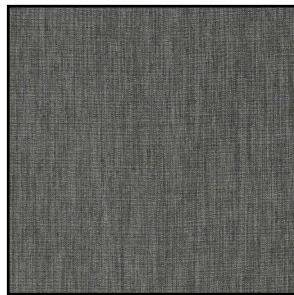
Legs: Aluminum

MANUFACTURER:	Kimball
ITEM:	Pairings: One Seat Armless Chair
DESCRIPTION:	Modular single person chair with fully upholstered seat and back on four metal leg base.
DIMENSIONS:	27" W x 29" D x 30" H
FINISHES:	Back: Strand, Stone 20112 - Grade 2, 100% Polyester Seat: Dolce, Artesian 11903 - Grade 2, 100% Polyurethane Legs: Aluminum
NOTES:	

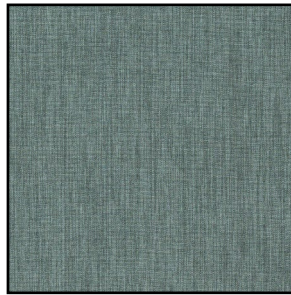
LOUNGE

L02

LOUNGE CHAIR



Under Seat:
Artisan, Tungsten



Seat and Back:
Artisan, Marlin



Legs:
Maple (Clear Finish)

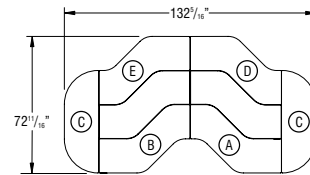
MANUFACTURER:	Sixinch
ITEM:	Glo Lounge Chair
DESCRIPTION:	Armless chair with upholstered seat and back with 4 wood leg base.
DIMENSIONS:	23-1/2" W x 29" D x 33" H
FINISHES:	Under Seat: Stinson, Grade D, Artisan - Tungsten 65070 Seat and Back: Stinson, Grade D, Artisan - Marlin 65073 Legs: Maple (Clear Finish)

NOTES:

LOUNGE

L03

LOUNGE SEATING

**PLAN:****LEGEND:**

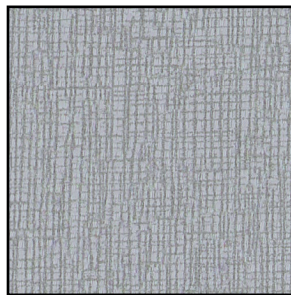
A: Two-Tiered Seating, S-Curve - Left - 48" Wide, Laminate Top on Upper Tier

B: Two-Tiered Seating, S-Curve - Right - 48" Wide, Laminate Top on Upper Tier

C: One-Tier Seating, Half-Oval - 54" Wide, Upholstered Top

D: One-Tier Seating, S-Curve - Left - 48" Wide, Upholstered Top

E: One-Tier Seating, S-Curve - Right - 48" Wide, Upholstered Top



Top Fabric:
Nimbus 27.346.092



Vertical Surfaces:
Felt 27.236.092

MANUFACTURER:

KI

ITEM:

Clamber Tiered Seating

DESCRIPTION:

Reconfigurable, multi-level, modular units made with a wood frame and vinyl upholstery. No power.

DIMENSIONS:

See Legend

FINISHES:

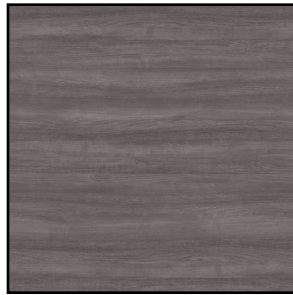
Top Fabric: Pallas, Metaphor - Nimbus 27.346.092
Vertical Surfaces: Pallas, Deflect - Felt 27.236.092

NOTES:

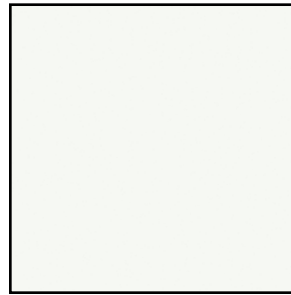
STORAGE

S01

3-SHELF FLEXIBLE SHELVING



Laminate:
Sterling Ash



Shell Color:
Cottonwood CO (204)

MANUFACTURER:

KI

ITEM:

Ruckus Storage - Double Face Bookcase

DESCRIPTION:

3-shelf, double face bookcase on lockable casters, steel interior construction and with laminate top.

DIMENSIONS:

36" W x 24" D x 36" H

FINISHES:

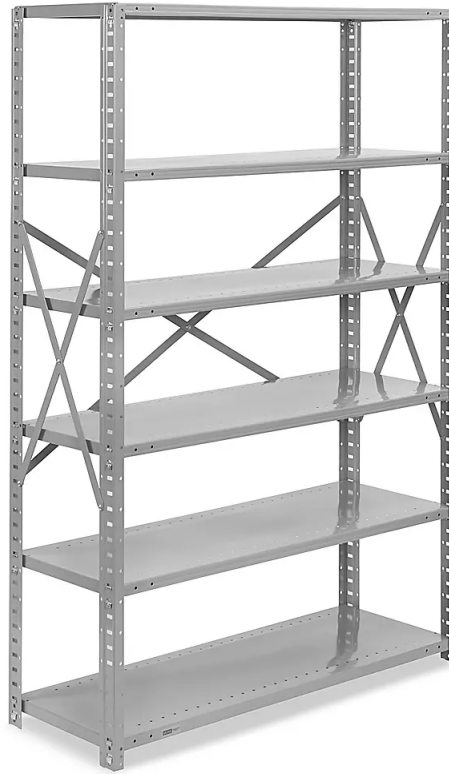
Shell Color: Cottonwood CO (204)
Laminate and Edgeband: Sterling Ash

NOTES:

STORAGE

S02

6-SHELF SHELVING

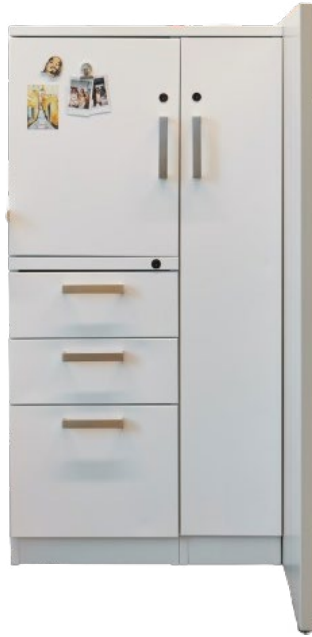


MANUFACTURER:	Uline
ITEM:	Industrial Steel Shelving (H-3843)
DESCRIPTION:	Six (6) adjustable shelves with no back panel. Welded box beams, front and rear.
DIMENSIONS:	36"W x 12D" x 87"H
FINISHES:	20-gauge steel shelves. Powder-coat finish
NOTES:	800lb/ shelf weight capacity. Install anchored to wall.

STORAGE

S03a

WARDROBE CABINET



Finish:
Cottonwood

MANUFACTURER:	KI
ITEM:	U-Series Storage
DESCRIPTION:	Lockable wardrobe cabinets made with 20-gauge steel with classic aluminum pulls.
DIMENSIONS:	15"W x 24"D x 66"H
FINISHES:	Cottonwood CO
NOTES:	

STORAGE

S03b

LATERAL SHELVES



IMAGE FOR REFERENCE - REFER TO DESCRIPTION



Finish:
Cottonwood

MANUFACTURER:	KI
ITEM:	700 Series Storage - Pedastal Mobile (S7P/1524MBF)
DESCRIPTION:	Lockable cabinet made with 20-gauge steel with classic aluminum pulls and casters. One 6" box drawer and one 12" file drawer with hanging folder partitions.
DIMENSIONS:	15"W x 21-5/8"D x 21-3/4"H
FINISHES:	Cottonwood CO
NOTES:	

STORAGE

S03c

VERTICAL SHELVES



IMAGE FOR REFERENCE - REFER TO DESCRIPTION



Finish:
Cottonwood

MANUFACTURER:	KI
ITEM:	700 Series Storage - Vertical Shelves (S7V/15305DFB)
DESCRIPTION:	Freestanding and lockable cabinet made with 20-gauge steel with classic aluminum pulls. Five 11" drawers with folder bars.
DIMENSIONS:	27-5/8"D x 15"W x 59-1/8"H
FINISHES:	Cottonwood CO
NOTES:	

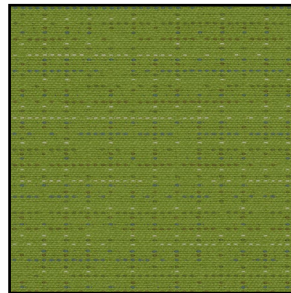
STORAGE

S04

ADAPTABLE STORAGE



Frame:
Cottonwood



Cushion:
Needlepoint, Thread

MANUFACTURER:	KI
ITEM:	Connection Zone Storage (CZSCL60150PFO+ CZSP)
DESCRIPTION:	Freestanding, lockable credenza made with 20-gauge steel with classic aluminum pulls. Box/lateral configuration with Pencil/Lateral File Left, Open with Adjustable Shelf Right, and 60"W credenza pad.
DIMENSIONS:	18"D x 60"W x 24"H
FINISHES:	Frame: Cottonwood CO Upholstered Seat: KI, Needlepoint, Thread (2NTD) - Grade 2
NOTES:	

STORAGE

S05

TALL CABINET



Laminate:
Kona

MANUFACTURER:	Kimball
ITEM:	AlternA Storage Cabinets Flat Top Double Doors (65K243084CSH2II + A3 + KRB)
DESCRIPTION:	Freestanding, lockable cabinet with fixed top shelf, three adjustable shelves, and curve pulls.
DIMENSIONS:	18"D x 60"W x 84"H
FINISHES:	Kona (KN)
NOTES:	

TABLE

T01a

MULTI-PURPOSE ROOM



*Frame: Starlight
Silver Metallic*



*Surface:
Washi Pewter*



*Edge:
Black*

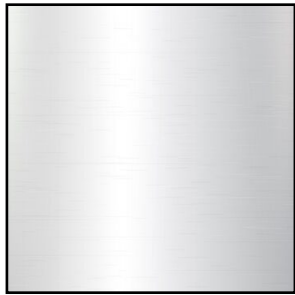
MANUFACTURER:	KI
ITEM:	Pirouette Table
DESCRIPTION:	Flip-top, fixed height table with nesting base and casters.
DIMENSIONS:	72" W x 36" D x 29" H
FINISHES:	Legs: Starlight Silver Metallic Laminate: Wilsonart Washi Pewter 5018-38 Edge: Black

NOTES:

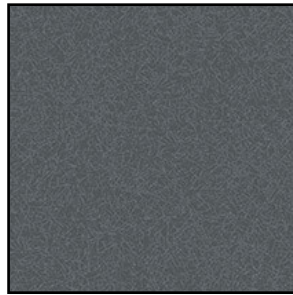
TABLE

T01b

MULTI-PURPOSE ROOM



*Frame: Starlight
Silver Metallic*



*Surface:
Washi Pewter*



*Edge:
Black*

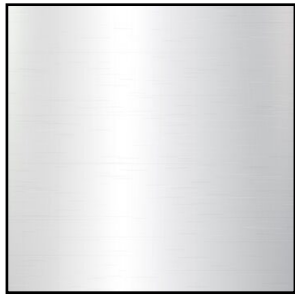
MANUFACTURER:	KI
ITEM:	Pirouette Table
DESCRIPTION:	Flip-top, fixed height table with nesting base and casters.
DIMENSIONS:	84" W x 36" D x 29" H
FINISHES:	Legs: Starlight Silver Metallic Laminate: Wilsonart Washi Pewter 5018-38 Edge: Black

NOTES:

TABLE

T01c

MULTI-PURPOSE ROOM



*Frame: Starlight
Silver Metallic*



*Surface:
Washi Pewter*



*Edge:
Black*

MANUFACTURER:	KI
ITEM:	Pirouette Table
DESCRIPTION:	Flip-top, fixed height table with nesting base and casters.
DIMENSIONS:	96" W x 36" D x 29" H
FINISHES:	Legs: Starlight Silver Metallic Laminate: Wilsonart Washi Pewter 5018-38 Edge: Black

NOTES:

TABLE

T02

MULTI-PURPOSE ROOM



*Frame: Starlight
Silver Metallic*



*Surface:
Washi Pewter*



*Edge:
Black*

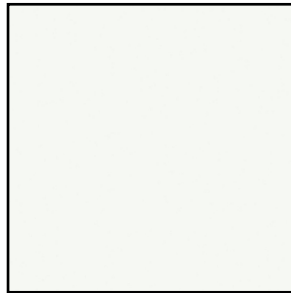
MANUFACTURER:	KI
ITEM:	Pirouette Table
DESCRIPTION:	Flip-top, fixed height table with nesting base and casters.
DIMENSIONS:	72" W x 24" D x 29" H
FINISHES:	Legs: Starlight Silver Metallic Laminate: Wilsonart Washi Pewter 5018-38 Edge: Black

NOTES:

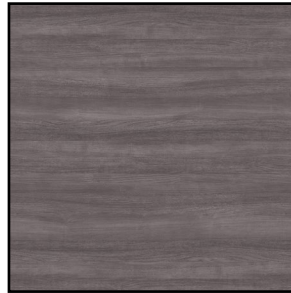
TABLE

T03

CONFERENCE TABLE



Base:
Cottonwood



Laminate:
Sterling Ash

MANUFACTURER:	KI
ITEM:	Tributaire Conference Table
DESCRIPTION:	Boat shaped worksurface with painted base and three grommets (one on each side and one in center).
DIMENSIONS:	42"D x 96"W x 29"H
FINISHES:	Laminate/ Edge: Sterling Ash Base: Cottonwood

NOTES:

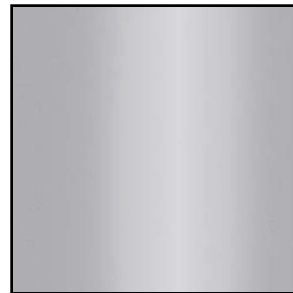
TABLE

T04

CAFE TABLE



Laminate:
Sterling Ash



Base: Starlight Silver
Metallic

MANUFACTURER:	KI
ITEM:	Tributaire - Cafe Table
DESCRIPTION:	Cafe table with square, laminate top and X-base.
DIMENSIONS:	36"D x 36"W x 29" H
FINISHES:	Laminate: Sterling Ash 74P Edge Color: Sterling Ash Base: Starlight Silver Metallic
NOTES:	

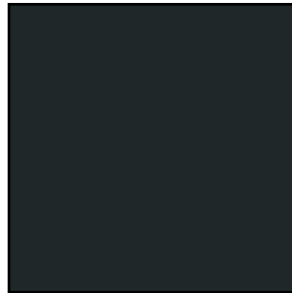
TABLE

T05

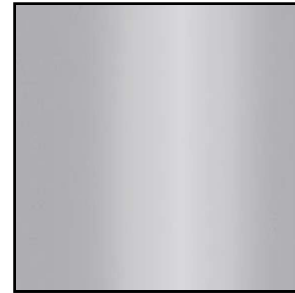
ACTIVITY TABLE



*Laminate:
Beigewood*



Edge: Black



*Base: Starlight Silver
Metallic*

MANUFACTURER:	KI
ITEM:	Ruckus: Round Activity (42")
DESCRIPTION:	Height-adjustable, 4-post round table with metal glides.
DIMENSIONS:	42" D x 20"-33" H
FINISHES:	Laminate: Beigewood Edge: Black Base Finish: Starlight Silver Metallic
NOTES:	

TABLE

T06

STUDENT ACTIVITY



Edge & Legs:
Zesty Lime



Laminate:
Beigewood

MANUFACTURER:	KI
ITEM:	Ruckus Activity Table; Horseshoe Shape
DESCRIPTION:	Horseshoe shaped activity table with adjustable legs and metal glides.
DIMENSIONS:	35" W x 57" D x 11.5"-18.5" H
FINISHES:	Edge & Legs: Zesty Lime Laminate: Beigewood
NOTES:	

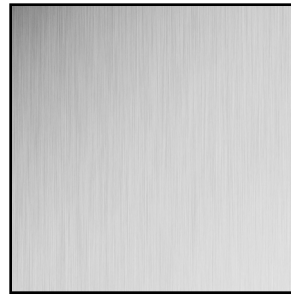
TABLE

T07

SIDE TABLE



Top: Brick Red



*Legs: Brushed
Aluminum*

MANUFACTURER:	Kimball
ITEM:	Pairings
DESCRIPTION:	Square side table with brushed aluminum legs
DIMENSIONS:	21" W x 21" D x 16" H
FINISHES:	Top: Brick Red (G2006) Legs: Brushed Aluminum
NOTES:	

TABLE

T08a

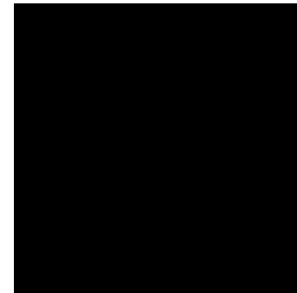
MULTI-PURPOSE ROOM



*Frame: Starlight
Silver Metallic*



*Surface:
Washi Pewter*



*Edge:
Black*

MANUFACTURER:	KI
ITEM:	Uniframe Convertible Bench Table (UCB8)
DESCRIPTION:	Folding, fixed height table with integrated bench, nesting base and casters.
DIMENSIONS:	29.5"W x 96"L x 27"H 15" Seat H
FINISHES:	Legs: Starlight Silver Metallic Laminate: Wilsonart Washi Pewter 5018-38 Edge: 739 Black

NOTES:

TABLE

T08b

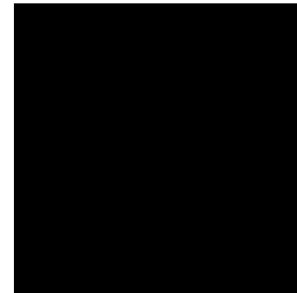
MULTI-PURPOSE ROOM



*Frame: Starlight
Silver Metallic*



*Surface:
Washi Pewter*



*Edge:
Black*

MANUFACTURER:	KI
ITEM:	Uniframe Round Seating Table - Stool (UFRDP)
DESCRIPTION:	Folding, fixed height round dining table with stool seats, nesting base and casters.
DIMENSIONS:	86" Diameter x 29" Table H
FINISHES:	Legs: Starlight Silver Metallic Laminate: Wilsonart Washi Pewter 5018-38 Edge: 739 Black

NOTES:

Furniture Plans

Main Building, CTE Building